



Lewes District Council

Lewes District Council and South Downs National Park Authority

Town & Country Planning Act 1990 Neighbourhood Planning Regulations (General) Regulations 2012

Designation of Barcombe Parish as a neighbourhood area

Lewes District Council received from Barcombe Parish Council, under Regulation 5 of the above Regulations, an application to designate the whole parish as a neighbourhood area for preparing a neighbourhood plan.

A copy of the application, including a map of the area was available on Lewes District Council's website www.lewes.gov.uk/planning/19084.asp and the Council's offices at Southover House, Lewes during working hours.


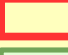

Comments were invited on whether Barcombe Parish is an appropriate neighbourhood area between Friday, 7th November and Friday, 19th December 2014. After considering the representations and under Regulation 7 of the above Regulations, we have designated Barcombe Parish as a neighbourhood area to allow Barcombe Parish Council to prepare a Neighbourhood Development Plan. The area is mapped overleaf.

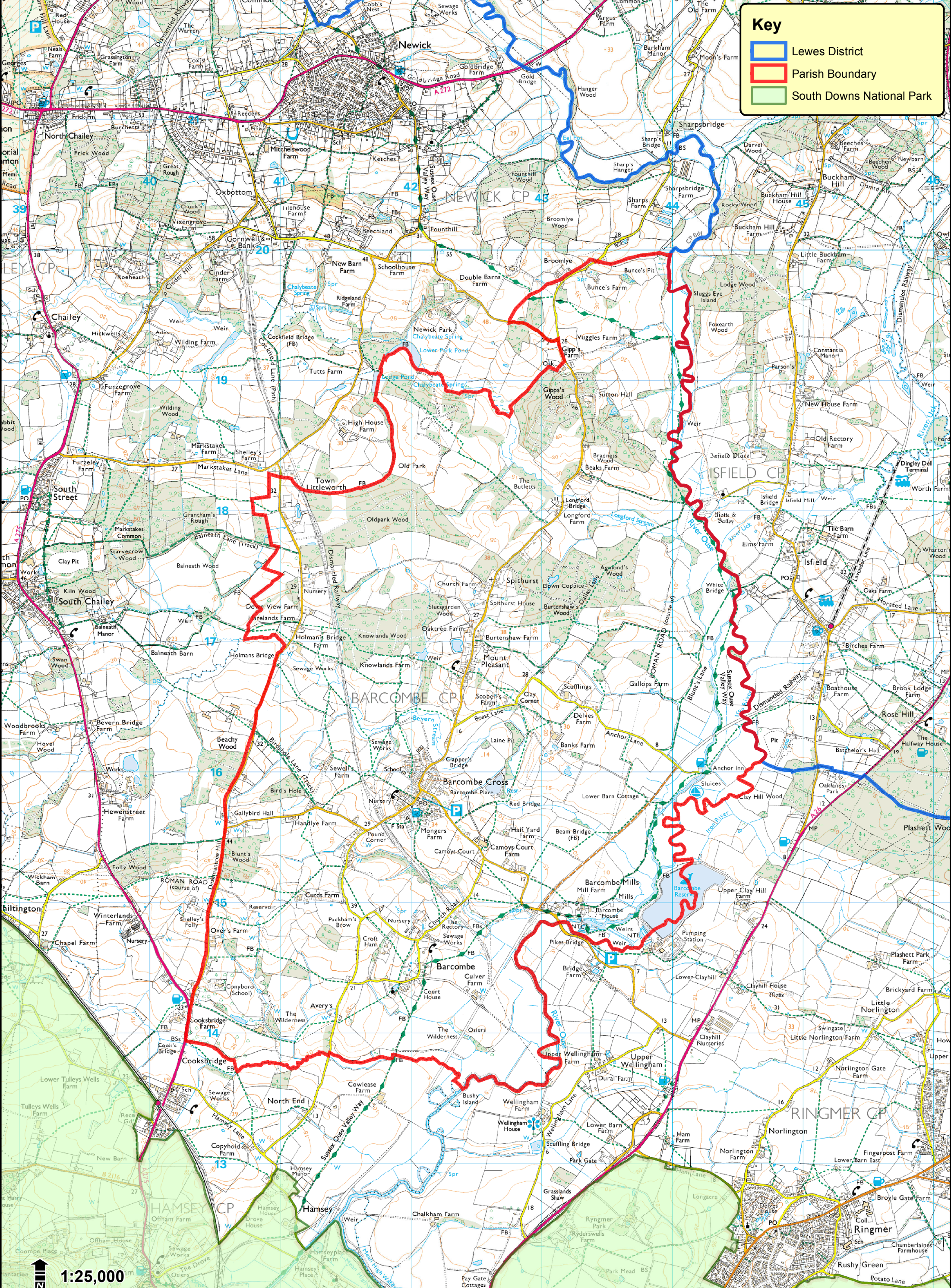
Nazeya Hussain
Director of Business Strategy and
Development

Tom Jones
Lead Councillor for Strategy and
Development

Friday 9th January 2015

Key

-  Lewes District
-  Parish Boundary
-  South Downs National Park



1:25,000

© Crown copyright and database rights 2013
Ordnance Survey 100019275.

Designated Barcombe Neighbourhood Area

