

# AECOM

**PROJECT**  
Lewes Landscape Sensitivity Assessment

**CLIENT**  
Eastbourne and Lewes District Councils

**CONSULTANT**  
AECOM Limited  
Sunley House  
4 Bedford Park  
Surrey, CR0 2AP  
www.aecom.com

**LEGEND**

- - - Land South East of Harveys Lane - T62RG
  - - - Lewes District Boundary
  - - - Lewes District Boundary - 2km ZTV Extent
  - ▨ South Downs National Park
  - Area of Outstanding Natural Beauty
  - Woodland
  - Building
- Zone of Theoretical Visibility - Degree of Maximum Visibility of Site**
- Low Visibility
  - Medium Visibility
  - High Visibility

**NOTES:**

Zone of Theoretical Visibility (ZTV) has been generated using Ordnance Survey Terrain 5 digital terrain model (DTM) which does not take into account the screening effects of vegetation, buildings or other structures. Existing Buildings have been incorporated into the DTM from OS Mastermap with an assumed height of 7.5. Woodland from the National Forest Inventory has also been incorporated into the DTM with an assumed height of 10m. ZTV is based upon Grid Points at 100m apart within the Site Footprints, with an observer height of 1.6m. All heights mentioned above are above ground level (AGL) unless otherwise specified.

Contains, or is based on, information supplied by the Forestry Commission. © Crown copyright and database right 2019 Ordnance Survey (100021242).  
Contains Ordnance Survey Data © Crown Copyright and database right 2023. Reproduced from Ordnance Survey digital map data © Crown copyright 2023. All rights reserved. License number 0100031673.

**ISSUE PURPOSE**  
FINAL

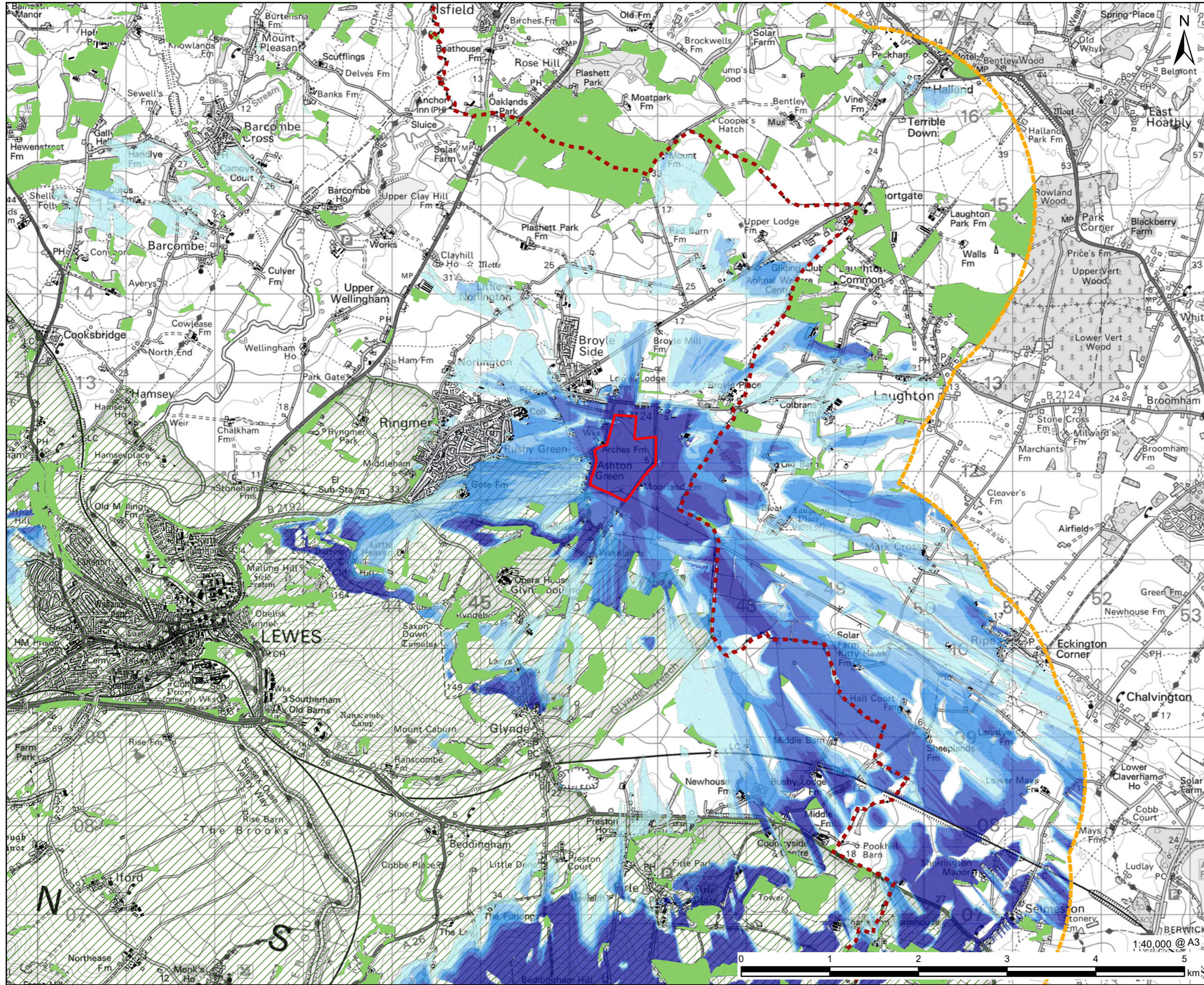
**PROJECT NUMBER**  
60676353

**FIGURE TITLE**  
Land South East of Harveys Lane T62RG - Zone of Theoretical Visibility

**FIGURE NUMBER**  
Figure C.6

This drawing has been prepared for the use of AECOM's client. It may not be used, modified, reproduced or relied upon by third parties, except as agreed by AECOM or as required by law. AECOM accepts no responsibility, and denies any liability whatsoever, to any party that uses or relies on this drawing without AECOM's express written consent. Do not scale this document. All measurements must be obtained from the stated dimensions.





# AECOM

**PROJECT**  
Lewes Landscape Sensitivity Assessment

**CLIENT**  
Eastbourne and Lewes District Councils

**CONSULTANT**  
AECOM Limited  
Sunley House  
4 Bedford Park  
Surrey, CR0 2AP  
www.aecom.com

**LEGEND**

- - - Land at Neaves Lane Ringmer - T63RG
  - - - Lewes District Boundary
  - - - Lewes District Boundary - 2km ZTV Extent
  - / / / South Downs National Park
  - Woodland
  - Building
- Zone of Theoretical Visibility - Degree of Maximum Visibility of Site**
- Low Visibility
  - 
  - High Visibility

**NOTES:**

Zone of Theoretical Visibility (ZTV) has been generated using Ordnance Survey Terrain 5 digital terrain model (DTM) which does not take into account the screening effects of vegetation, buildings or other structures. Existing Buildings have been incorporated into the DTM from OS Mastermap with an assumed height of 7.5. Woodland from the National Forest Inventory has also been incorporated into the DTM with an assumed height of 10m. ZTV is based upon Grid Points at 100m apart within the Site Footprints, with an observer height of 1.6m. All heights mentioned above are above ground level (AGL) unless otherwise specified.

Contains, or is based on, information supplied by the Forestry Commission. © Crown copyright and database right 2019 Ordnance Survey (100021242). Contains Ordnance Survey Data © Crown Copyright and database right 2023. Reproduced from Ordnance Survey digital map data © Crown copyright 2023. All rights reserved. License number 0100031673.

**ISSUE PURPOSE**  
FINAL

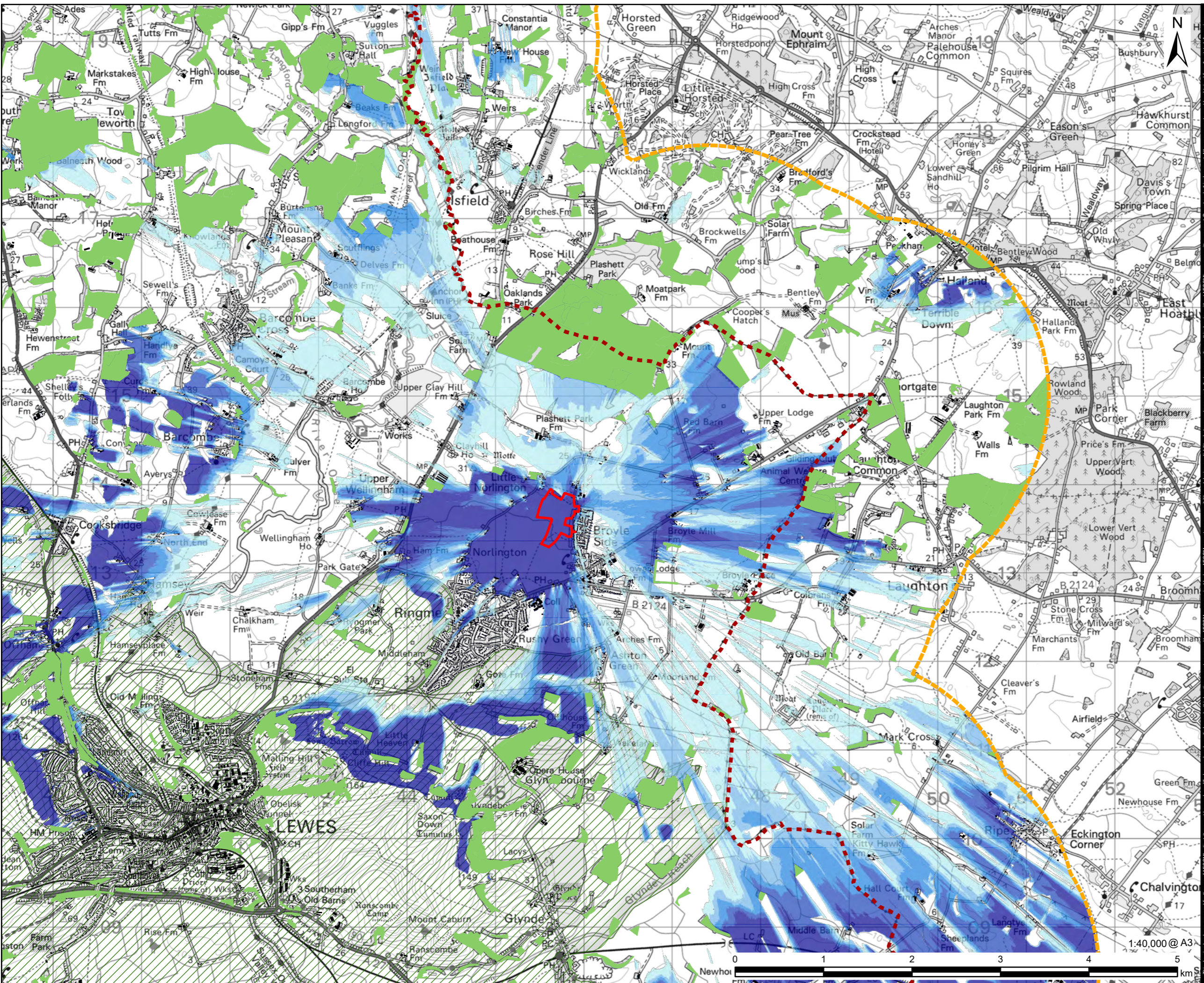
**PROJECT NUMBER**  
60676353

**FIGURE TITLE**  
Land at Neaves Lane Ringmer T63RG - Zone of Theoretical Visibility

**FIGURE NUMBER**  
Figure C.7

This drawing has been prepared for the use of AECOM's client. It may not be used, modified, reproduced or relied upon by third parties, except as agreed by AECOM or as required by law. AECOM accepts no responsibility, and denies any liability whatsoever, to any party that uses or relies on this drawing without AECOM's express written consent. Do not scale this document. All measurements must be obtained from the stated dimensions.





**PROJECT**  
Lewes Landscape Sensitivity Assessment

**CLIENT**  
Eastbourne and Lewes District Councils

**CONSULTANT**  
AECOM Limited  
Sunley House  
4 Bedford Park  
Surrey, CR0 2AP  
www.aecom.com

**LEGEND**

- ▭ Land at Howells Bank Farm, Broyle Lane - T67RG
  - - - Lewes District Boundary
  - - - Lewes District Boundary - 2km ZTV Extent
  - ▨ South Downs National Park
  - Wodland
  - Building
- Zone of Theoretical Visibility - Degree of Maximum Visibility of Site**
- Low Visibility
  - 
  - High Visibility

**NOTES:**

Zone of Theoretical Visibility (ZTV) has been generated using Ordnance Survey Terrain 5 digital terrain model (DTM) which does not take into account the screening effects of vegetation, buildings or other structures. Existing Buildings have been incorporated into the DTM from OS Mastermap with an assumed height of 7.5. Woodland from the National Forest Inventory has also been incorporated into the DTM with an assumed height of 10m. ZTV is based upon Grid Points at 100m apart within the Site Footprints, with an observer height of 1.6m. All heights mentioned above are above ground level (AGL) unless otherwise specified.

Contains, or is based on, information supplied by the Forestry Commission. © Crown copyright and database right 2019 Ordnance Survey (100021242).

Contains Ordnance Survey Data © Crown Copyright and database right 2023. Reproduced from Ordnance Survey digital map data © Crown copyright 2023. All rights reserved. License number 0100031673.

**ISSUE PURPOSE**  
FINAL

**PROJECT NUMBER**  
60676353

**FIGURE TITLE**  
Land at Howells Bank Farm, Broyle Lane T67RG - Zone of Theoretical Visibility

**FIGURE NUMBER**  
Figure C.4

This drawing has been prepared for the use of AECOM's client. It may not be used, modified, reproduced or relied upon by third parties, except as agreed by AECOM or as required by law. AECOM accepts no responsibility, and denies any liability whatsoever, to any party that uses or relies on this drawing without AECOM's express written consent. Do not scale this document. All measurements must be obtained from the stated dimensions.

1:40,000 @ A3

