

PROJECT
Lewes Biodiversity Study

CLIENT
Eastbourne and Lewes District Councils

CONSULTANT
AECOM Limited
Sunley House
4 Bedford Park
Surrey, CR0 2AP
www.aecom.com

- LEGEND**
- Lewes District Boundary
 - South Downs National Park
- Priority Habitats Inventory**
- Coastal and floodplain grazing marsh
 - Deciduous woodland
 - Lowland dry acid grassland
 - Lowland fens
 - Lowland heathland
 - Lowland meadows
 - Traditional orchard
- Non-Priority Habitat but Holds Potential Importance for Conservation of Biodiversity**
- Good quality semi improved grassland
 - No main habitat but additional habitats present

NOTES

Habitats completely within South Downs National Park not shown on Figure

Reproduced from Ordnance Survey digital map data © Crown copyright 2023. All rights reserved. Licence number 0100031673

Contains Ordnance Survey Data © Crown Copyright and database right 2023.

© Natural England copyright. Contains Ordnance Survey data © Crown copyright and database right 2023

ISSUE PURPOSE
DRAFT

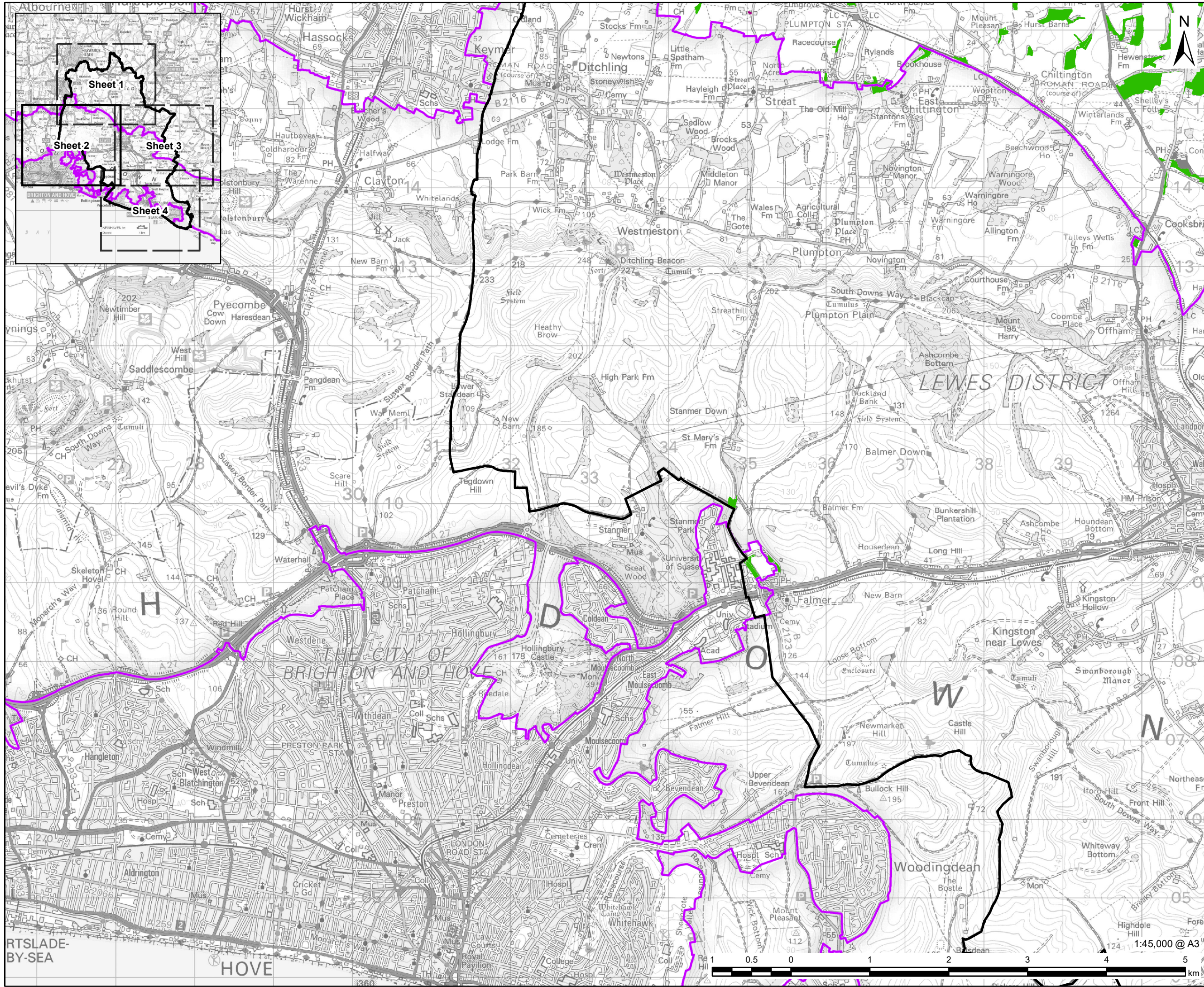
PROJECT NUMBER
60676353

FIGURE TITLE
Priority Habitats (BAP) Across Lewes
Sheet 1 of 4

FIGURE NUMBER
Figure A3

This drawing has been prepared for the use of AECOM's client. It may not be used, modified, reproduced or relied upon by third parties, except as agreed by AECOM or as required by law. AECOM accepts no responsibility, and denies any liability whatsoever, to any party that uses or relies on this drawing without AECOM's express written consent. Do not scale this document. All measurements must be obtained from the stated dimensions.





PROJECT
Lewes Biodiversity Study

CLIENT
Eastbourne and Lewes District Councils

CONSULTANT
AECOM Limited
Sunley House
4 Bedford Park
Surrey, CR0 2AP
www.aecom.com

LEGEND

- Lewes District Boundary
- South Downs National Park
- Priority Habitats Inventory**
 - Deciduous woodland
 - Traditional orchard
- Non-Priority Habitat but Holds Potential Importance for Conservation of Biodiversity**
 - Good quality semi improved grassland
 - No main habitat but additional habitats present

NOTES

Habitats completely within South Downs National Park not shown on Figure

Reproduced from Ordnance Survey digital map data © Crown copyright 2023. All rights reserved. Licence number 0100031673

Contains Ordnance Survey Data © Crown Copyright and database right 2023.

© Natural England copyright. Contains Ordnance Survey data © Crown copyright and database right 2023

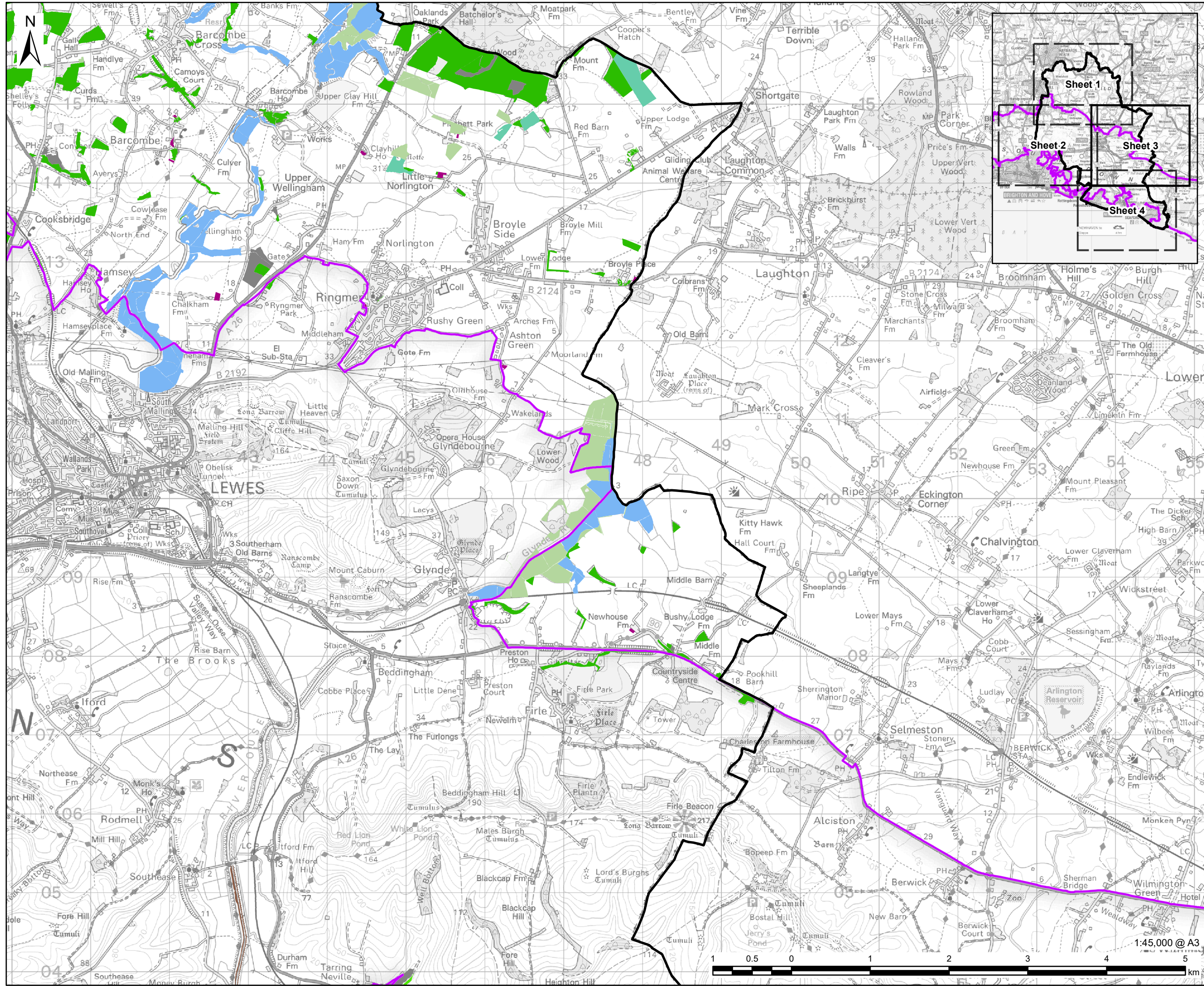
ISSUE PURPOSE
DRAFT

PROJECT NUMBER
60676353

FIGURE TITLE
Priority Habitats (BAP) Across Lewes
Sheet 2 of 4

FIGURE NUMBER
Figure A3

This drawing has been prepared for the use of AECOM's client. It may not be used, modified, reproduced or related upon by third parties, except as agreed by AECOM or as required by law. AECOM accepts no responsibility, and denies any liability whatsoever, to any party that uses or relies on this drawing without AECOM's express written consent. Do not scale this document. All measurements must be obtained from the stated dimensions.



PROJECT
Lewes Biodiversity Study

CLIENT
Eastbourne and Lewes District Councils

CONSULTANT
AECOM Limited
Sunley House
4 Bedford Park
Surrey, CR0 2AP
www.aecom.com

- LEGEND**
- Lewes District Boundary
 - South Downs National Park
- Priority Habitats Inventory**
- Coastal and floodplain grazing marsh
 - Deciduous woodland
 - Lowland calcareous grassland
 - Lowland meadows
 - Mudflats
 - Traditional orchard
- Non-Priority Habitat but Holds Potential Importance for Conservation of Biodiversity**
- Good quality semi improved grassland
 - No main habitat but additional habitats present

NOTES

Habitats completely within South Downs National Park not shown on Figure

Reproduced from Ordnance Survey digital map data © Crown copyright 2023. All rights reserved. Licence number 0100031673

Contains Ordnance Survey Data © Crown Copyright and database right 2023.

© Natural England copyright. Contains Ordnance Survey data © Crown copyright and database right 2023

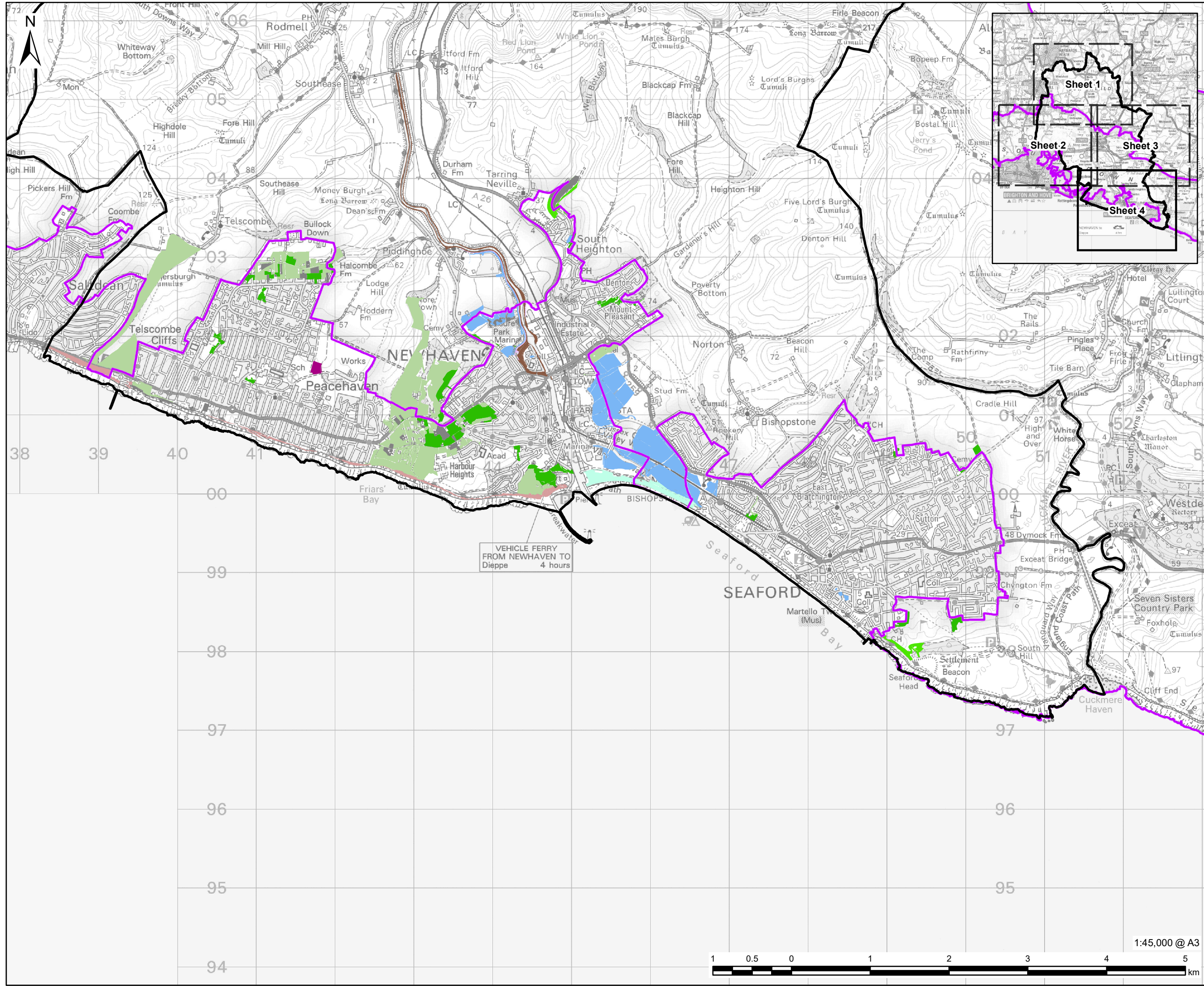
ISSUE PURPOSE
DRAFT

PROJECT NUMBER
60676353

FIGURE TITLE
Priority Habitats (BAP) Across Lewes
Sheet 3 of 4

FIGURE NUMBER
Figure A3

This drawing has been prepared for the use of AECOM's client. It may not be used, modified, reproduced or relied upon by third parties, except as agreed by AECOM or as required by law. AECOM accepts no responsibility, and denies any liability whatsoever, to any party that uses or relies on this drawing without AECOM's express written consent. Do not scale this document. All measurements must be obtained from the stated dimensions.



PROJECT

Lewes Biodiversity Study

CLIENT

Eastbourne and Lewes District Councils

CONSULTANT

AECOM Limited
 Sunley House
 4 Bedford Park
 Surrey, CR0 2AP
 www.aecom.com

LEGEND

Lewes District Boundary

South Downs National Park

Priority Habitats Inventory

Coastal and floodplain grazing marsh

Coastal saltmarsh

Coastal vegetated shingle

Deciduous woodland

Deciduous woodland, Maritime cliff and slope

Lowland calcareous grassland

Maritime cliff and slope

Mudflats

Traditional orchard

Non-Priority Habitat but Holds Potential Importance for Conservation of Biodiversity

Good quality semi improved grassland

No main habitat but additional habitats present

NOTES

Habitats completely within South Downs National Park not shown on Figure

Reproduced from Ordnance Survey digital map data © Crown copyright 2023. All rights reserved. Licence number 0100031673

Contains Ordnance Survey Data © Crown Copyright and database right 2023.

© Natural England copyright. Contains Ordnance Survey data © Crown copyright and database right 2023

ISSUE PURPOSE

DRAFT

PROJECT NUMBER

60676353

FIGURE TITLE

Priority Habitats (BAP) Across Lewes
 Sheet 4 of 4

FIGURE NUMBER

Figure A3

1:45,000 @ A3



VEHICLE FERRY FROM NEWHAVEN TO Dieppe 4 hours

This drawing has been prepared for the use of AECOM's client. It may not be used, modified, reproduced or relied upon by third parties, except as agreed by AECOM or as required by law. AECOM accepts no responsibility, and denies any liability whatsoever, to any party that uses or relies on this drawing without AECOM's express written consent. Do not scale this document. All measurements must be obtained from the stated dimensions.