

End of Year Report



Wilder Ouse

2023-2024

Wilder Ouse is a **partnership project** working across the Ouse River catchment to deliver **Nature-based solutions** and create a **Nature Recovery Network**.

Our small team of experts work with **communities and landowners** to help people and wildlife by **restoring ecological connectivity, ecosystem function** and **building climate resilience**. The project is hosted by Sussex Wildlife Trust, and supported by the Ouse and Adur Rivers Trust, the Woodland Trust, the Environment Agency, and Lewes District Council.



Progress Reporting

Habitat Delivery

Tree Planting

4512

Trees Planted

[CLICK HERE](#)

Including a partnership project with [Forests Without Frontiers](#)



700m

Traditional Hedging

Niche Habitat Restoration



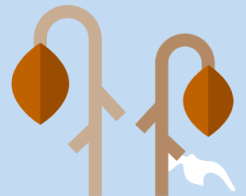
5

Hibernacula
Built



220m

Dead Hedging
Laid



Wetland Habitat Creation

11

Pocket Ponds

12

Ponds
created or restored

7

Seasonal Scrapes



Climate Resilience & Nature-based Solutions

Natural Regeneration of Trees and Shrub

6.8 Ha

Land assigned to naturally regenerate



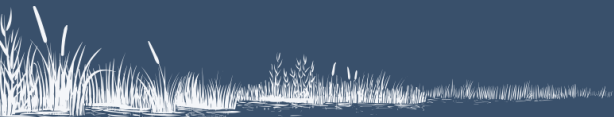
4 Tonnes

of Carbon stored Per Year Through New Regeneration
Once The Trees Reach 5+ y/o

Carbon Sequestration

4116

Tonnes of Carbon Per Annum Through Wetland Creation



38,000

Kilograms of Carbon Per Year Through Hedgerow Planting

7.8

Kilograms of Carbon in 500 Trees Planted

Follow This Link to Find Out Where!



Catchment Wide Water Storage

87



Leaky Dams Slowing the Flow

207,000L

Water stored during every large rainfall event

21



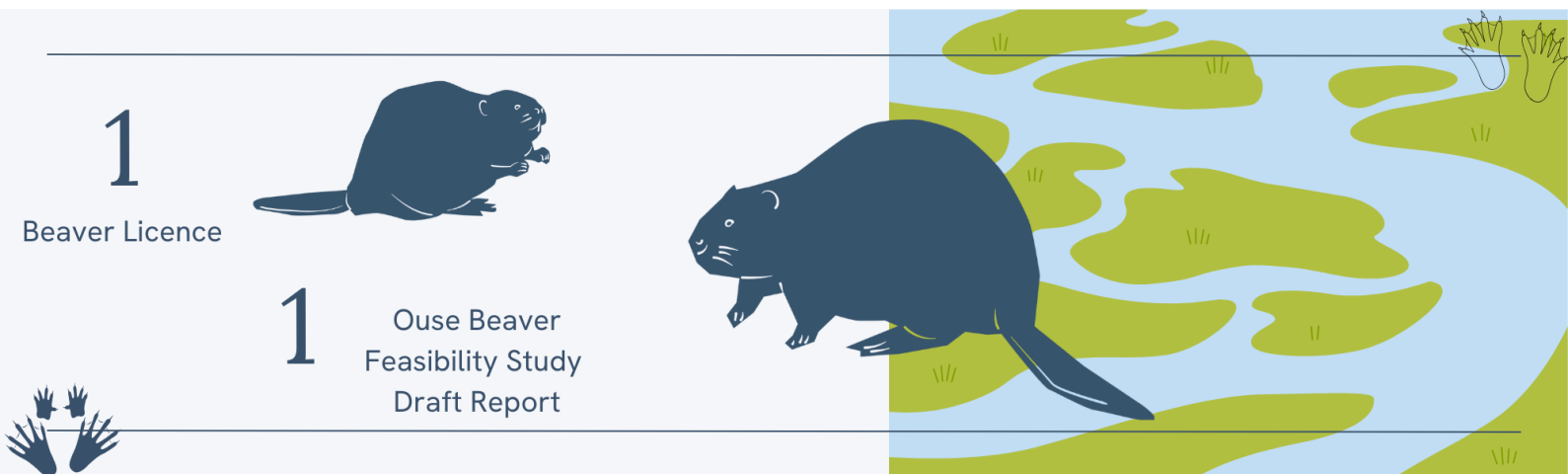
Ponds and Scrapes Holding back Water

Strategic and Catchment Scale

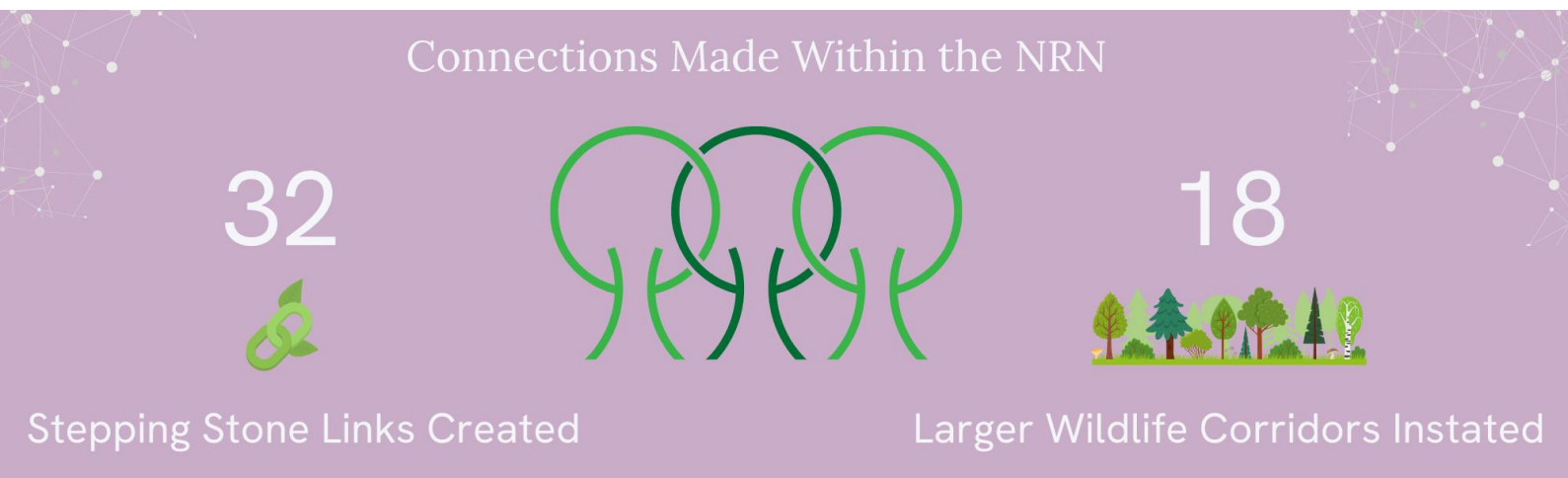
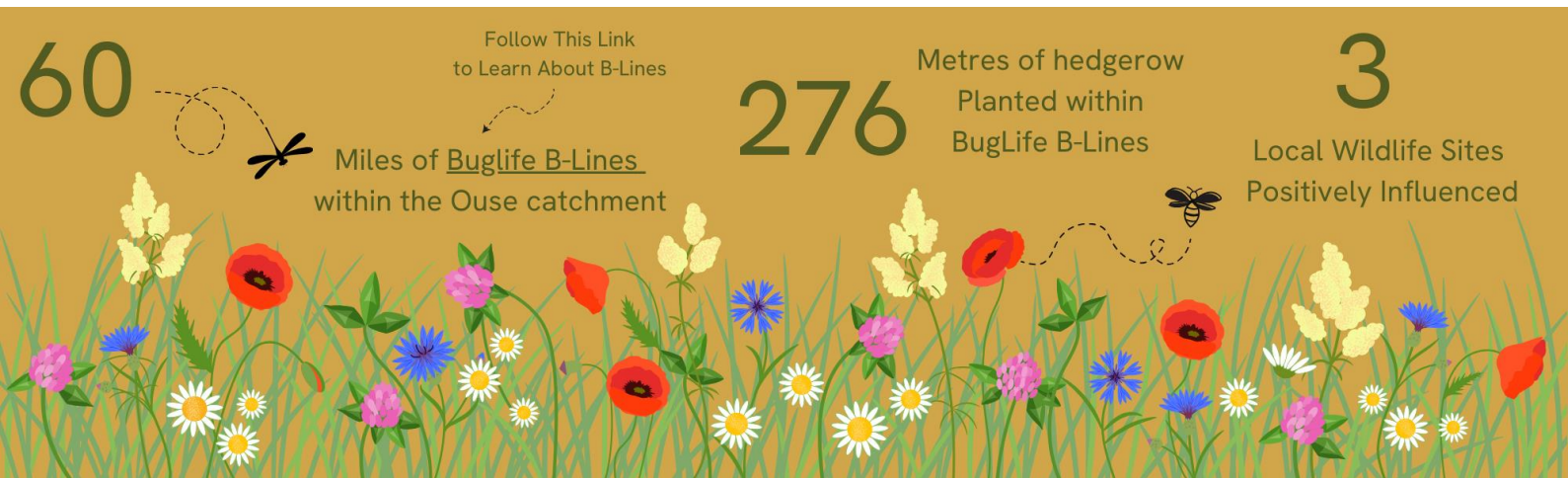


Species Recovery

Making Space for Our Native Wildlife



Nature Recovery Networks



Inspiring and Engaging the Community



Social Media and Website

29,763

Accounts Reached

4,780

Website Views



923

Followers

on

X

(previously Twitter)

Workshops and Events

4

Schools Engaged

2

Public Talks



4

Leaky Dam
Workshop Events



26

Community &
Stakeholder groups
involved with the
project

Partnerships

Delivered Four Leaky Dam Workshop
for the Lost Woods Project



Working Collaboratively
With
Weald to Waves



Ouse and Adur Rivers Trust
Became Official Partners





1133

Hours of Volunteer Time
including workshops & partnership activities

Volunteering



To Help With Over

15

Activities



Budget and Funding

In-Kind Contributions

£23,767



Volunteering Hours

Worth

£6,120



Cash Match Funding

£15,302



Core income raised by SWT



£32,500



£38,183



'In-kind' staff time contributed



To see how we are progressing towards our 5-year targets for this project, please see the related word document containing two tables indicating the level of progression towards the final goal (key: green - overachieving, orange - on-track, red - not yet started) and achievements/outcomes of the project for the financial year 2023-24.

We appreciate the continued support from our official project partners, our volunteers and our committed landowners making a difference for nature across the Ouse catchment.

*Thank
you!*



Five Year Targets for the Wilder Ouse Project		
Habitat Delivery and Nature Based Solutions	Target	Progress for Year One (2023-24)
Hectares of natural regeneration of trees support (& carbon impacts thereof)	Monitor and report	9.6Ha
Report on the carbon storage of WO interventions	Monitor and report	4 Tonnes (Per Year once trees reach 5 y/o)
Support the appropriate planting of trees	20,000	4,512
Restore priority habitat including meadows, wetlands and woodlands.	30 ha	0.5 Ha of Wetland Created 2.8 Ha of Woodland
Create additional natural water storage in the catchment	20,000,000 litres	207,000L* *per significant rainfall event
Reconnect floodplain	3ha	
Develop case study sites/projects for restoration of natural processes, the recovery of ecosystem engineers and the creation of more naturalistic and Wild habitats. Including at least one hybrid NFM/Flood risk & Climate change project with EA	3	2 case studies in initial phases (1 NFM, 1 restoration/protection)
Support the restoration of at least one breeding pair of beavers to the catchment (as a source population for catchment scale restoration).	1	Ouse beaver feasibility study draft report created
Develop joint restoration guidance and wet woodland targets with Woodland Trust	Monitor and report	Requires further discussion and partnership working
Store habitat-based carbon for climate mitigation	10,000 tonnes p.a.	~4,500 Tonnes* *per annum with appropriate management
Strategic and Catchment Scale	Target	Progress Year One (2023-24)
Provide expert technical advice to landowners	5,000 acres	2,513 acres
Produce strategic catchment reports on Beaver feasibility, Nature Recovery Networks, Climate Resilience and Nature Based Solutions, Species / Habitat resilience + 1 other	5	Feasibility draft report complete, Species report in progress
Inspiring and Engaging the Community	Target	Progress Year one (2023-24)



Develop a trained team of volunteers contributing to project monitoring	20+	Delivered a talk on animal tracking and signs Plans to roll out basic surveying to a small group of volunteers
Upskill a team of volunteers, professionals and contractors	20+	x10 regular volunteers x2 contractors Up to 86 individual volunteers attended multiple events
Generate at least 2 media posts p.a. for each partner of the project	10	1 x post for LDC, WT & OART
Wild Woodlands leaky dam workshops for Lost Woods of the Low Weald	2	4 x workshops complete within Lost Woods boundary
Hours of volunteer contribution	1000+	1133
Community/Stakeholder groups engaged with	30+	20 groups engaged Including: 4 x schools 3 x community owned parcels of land
Engage with all parish councils on existing W2W route, and Parish Councils on proposed source to sea Ouse W2W extension corridor	100% and 80%	2 Parish Councils engaged with out of 67. 28 are within the Weald to Waves corridor
Media and social media reach p.a.	50,000	29,763 accounts reached Engagement 3.1% over average
Added Value	Target	Progress Year One (2023-24)
Attract funding from grant sources or new partners over the next 5 years.	£50,000	£38,183
Attract 'in kind' funding	£50,000	£23,767
Follow up surveys to landowners of key sites to review impact	Minimum 5	Survey design TBC and created



Overall Summary of Delivery

Deliverables	No/Amount Promised	Completed This Period	Year Total
Events	5	7 ¹	7
Hedging (m)	410m	700m	700m
Schools engaged	2	3	3
Trees planted	2118	4512	4512
Swales	6	3	3
Leaky dams	73	87	87
Pond creation / restoration	12	12	12
Scrapes	0	7	7
Pocket Ponds (in addition to pond creation)	0	11	11
Additional Water storage (not including repeat rainstorms)	165,000 L	Minimum 207,000 L	207,000 L

Added Value and Additional Delivery

Deliverable	This Period
Public talks	2
Hibernacula	5
Dead Hedging	220m
Invasive Species Removal	3
Additional Cash Match funding	£15,302*
'In Kind' Match Funding SWT (Management, FCR, Press etc.)	£32,500**
Additional 'In Kind' funding including Volunteering	£29,887
Core income brought in by SWT to fund Wilder Ouse	£38,183
Additional SWT Staff time developing new sites, projects and relationships (unfunded by partners)	Minimum £10,000



* The figures do not acknowledge the in-kind time that our project partners and landowners provide to the project

** The figures do not acknowledge the in-kind time or resources that our project partners and landowners provide to the project