

**Lewes District Council and South Downs National Park Authority**

**Town & Country Planning Act 1990  
Neighbourhood Planning Regulations (General) Regulations 2012**

**Application for designation of Ringmer Parish as a neighbourhood area**

Lewes District Council and South Downs National Park Authority have received from Ringmer Parish Council under Regulation 5 of the above Regulations to designate the whole parish as a neighbourhood area for preparing a neighbourhood plan.

A copy of the application, including a map of the area<sup>1</sup> can be viewed on Lewes District Council's website [www.lewes.gov.uk/planning/19084.asp](http://www.lewes.gov.uk/planning/19084.asp), the Council's offices at Southover House, Lewes and the National Park Authority's offices at Rosemary's Parlour, Midhurst during working hours.

Representations on whether Ringmer Parish is an appropriate neighbourhood area may be made to **Lewes District Council** and must be received by Friday, 3 August. Representations may be made by emailing [ldf@lewes.gov.uk](mailto:ldf@lewes.gov.uk) or by writing to Neighbourhood Planning, Lewes District Council, Southover House, Southover Road, Lewes, BN7 1AB.

Tal Kleiman & Susie Mullins  
Neighbourhood Planning Officers  
Lewes District Council

Andrew Triggs  
Neighbourhood Planning Officer  
South Downs National Park Authority

Thursday, 14 June 2012

---

<sup>1</sup> Lewes District Council has also produced a map of the area, which is attached to the application.



# RINGMER PARISH COUNCIL



Website: [www.ringmerparishcouncil.org.uk](http://www.ringmerparishcouncil.org.uk)

Email : [clerk.ringmerparishcouncil@btconnect.com](mailto:clerk.ringmerparishcouncil@btconnect.com)

**Chairman:**

Dr. J E Kay

**Clerk to the Council:**

Chris Elphick

Parish Council Office,  
Village Hall, Ringmer,  
LEWES, East Sussex  
BN8 5QH

Tel: Ringmer (01273) 813242  
(24 hour Ansaphone)

12 June 2012

Mr L Frost, Director of Planning & Environmental Services, Lewes District Council,  
Southover House, Southover Road, Lewes, East Sussex , BN7 1AB

Mr T Slaney, Director of Planning, South Downs National Park Authority, Hatton House,  
Bepton Road, Midhurst, West Sussex, GU29 9LU

Dear Sirs,

**Application for a Neighbourhood Development Plan for Ringmer Parish under  
the Localism Act (2011)**

Ringmer Parish Council hereby applies to undertake a Neighbourhood Development  
Plan under the provisions of the Localism Act (2011).

This Plan will cover the whole of the civil parish of Ringmer, East Sussex, as shown  
on the attached map.

Ringmer Parish lies partly within the South Downs National Park. About 20% of the  
land area of the parish, but fewer than 2% of its households, lies within the National  
Park.

We believe the civil parish to be the appropriate area, as although Ringmer is a large  
parish containing two settlements and an extensive rural area, it functions as a single  
community. Ringmer Parish Council is the lower tier local authority for the entire  
parish and represents the whole parish. As a phase 1 front-runner work has already  
begun to collect evidence and develop policies for the parish as a whole, and there has  
been excellent participation in this process by residents from all areas of the parish.

Ringmer Parish Council, constituted under Section 61G(2)(a) of the Town and  
Country Planning Act 1990, is considered a relevant body for undertaking a

Neighbourhood Development Plan under the Neighbourhood Planning regulations of  
the Localism Act.

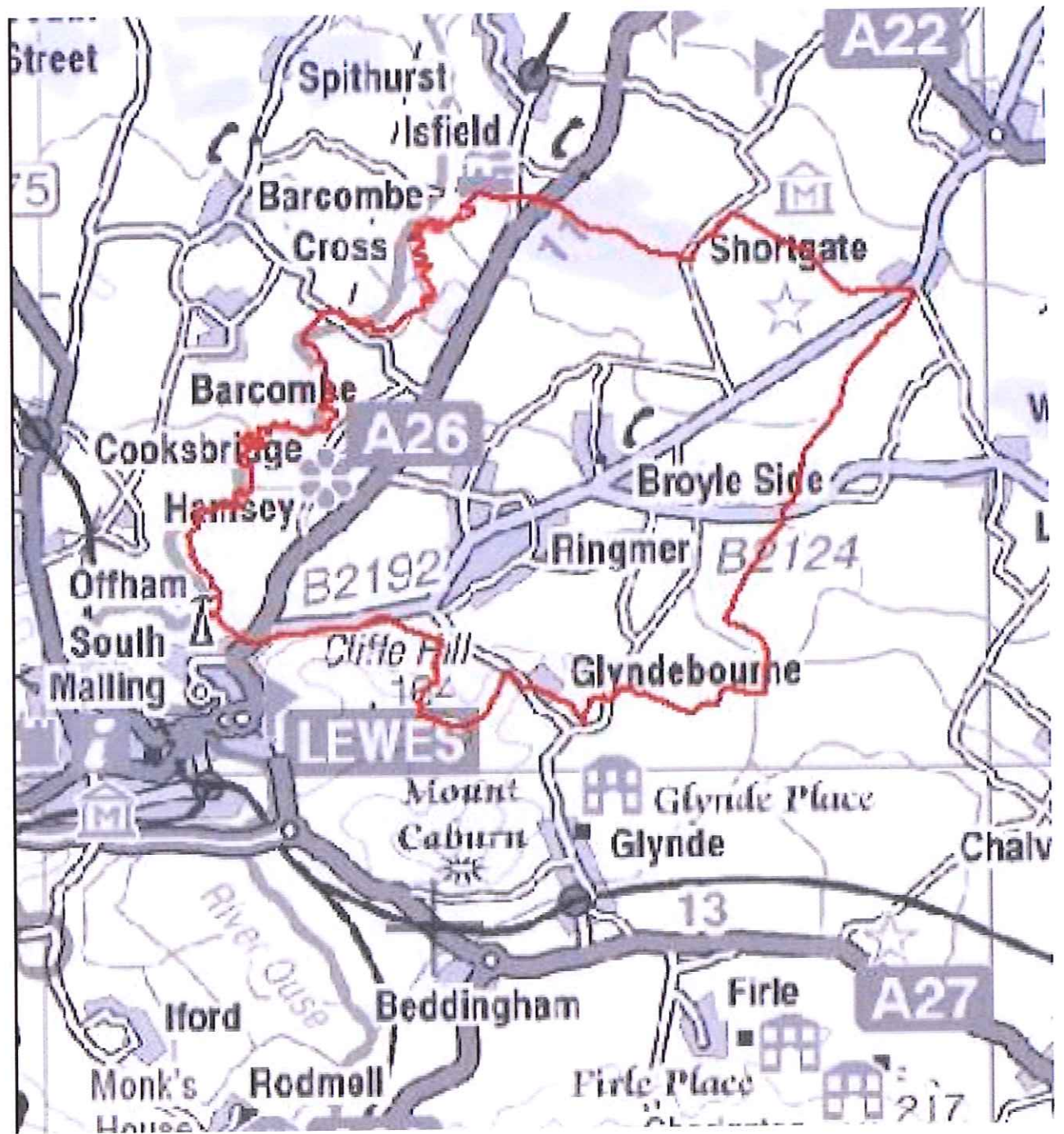
Yours faithfully

A handwritten signature in black ink, appearing to be 'C. Elphick', written in a cursive style.

Mr. C. Elphick  
Clerk to the Council

Cllr. J. E. Kay  
Chairman

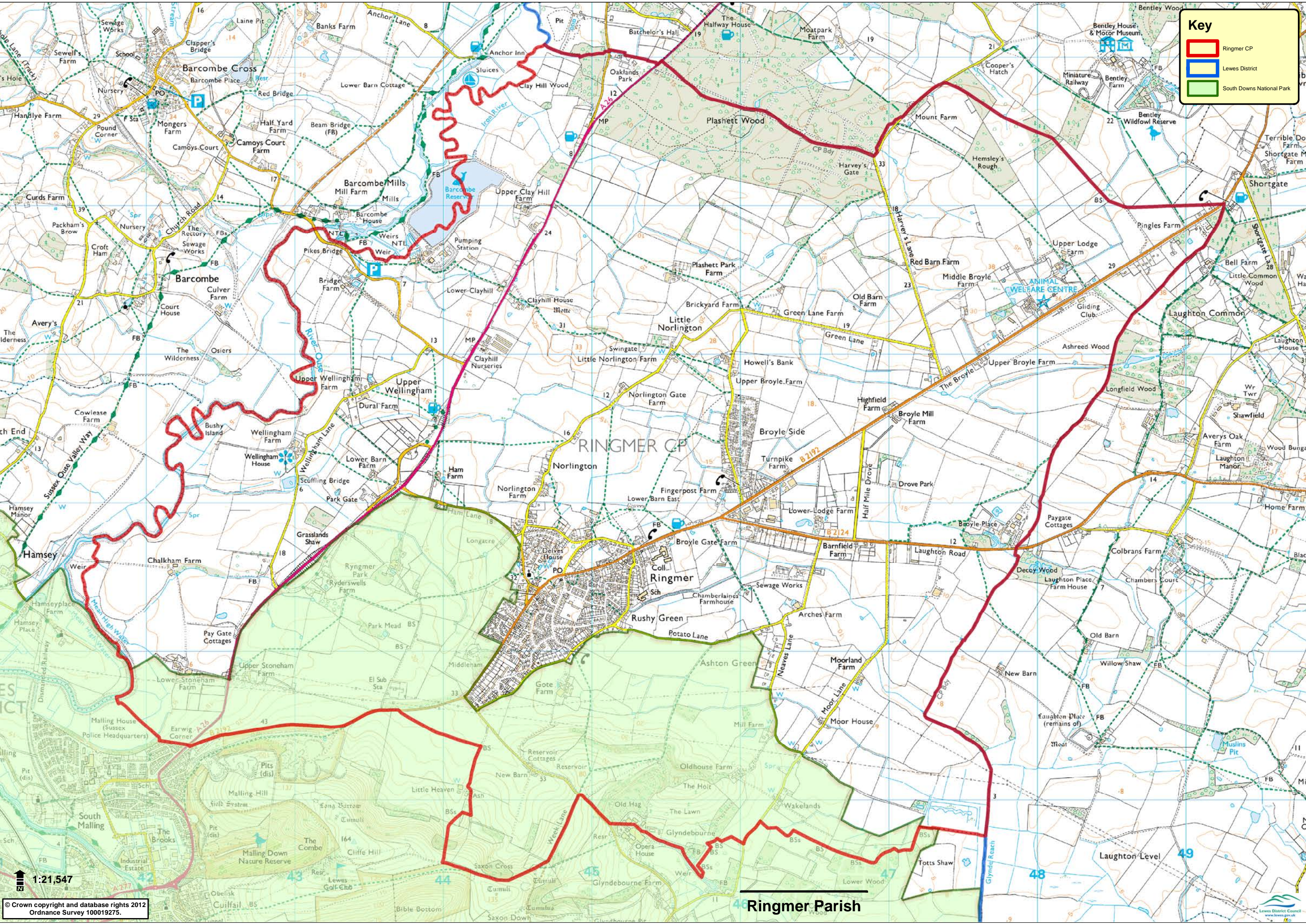
Cllr. R.C. Booth  
Chairman, Planning Committee



The area of the civil parish of Ringmer is outlined in red on the map above.

**Key**

- Ringmer CP
- Lewes District
- South Downs National Park



1:21,547

© Crown copyright and database rights 2012  
Ordnance Survey 100019275.

Ringmer Parish

