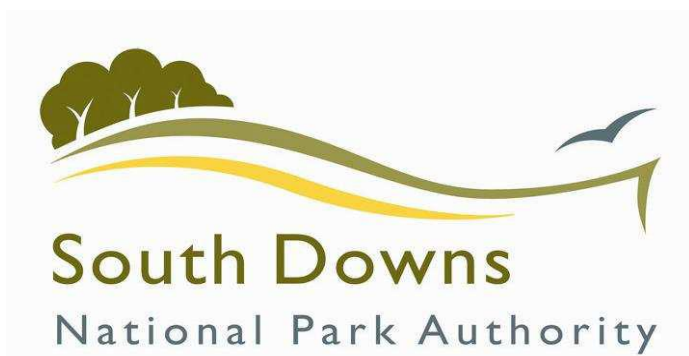


Newhaven Neighbourhood Development Plan

**Information Statement for
Referendum on
10th October 2019**



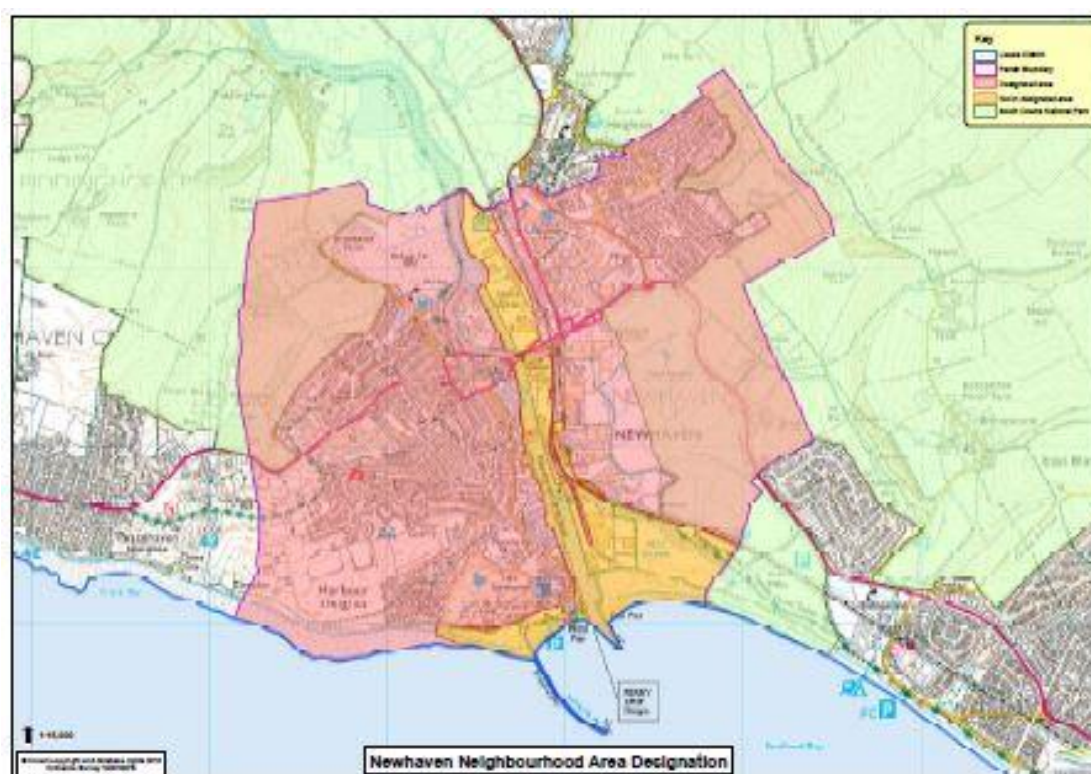
Introduction

A referendum on the Newhaven Neighbourhood Plan will be held on Thursday, 10th October 2019. The referendum will be conducted based on procedures which are similar to those used at local government elections.

The question to be asked in the referendum is:

Do you want Lewes District Council and the South Downs National Park Authority to use the neighbourhood plan for the Newhaven to help it decide planning applications in the neighbourhood area?’

The neighbourhood area is the entire area and is marked in the map below:



Can I vote?

You can vote in the referendum if you live in Newhaven and:

- you are registered to vote in local council elections; and
- you are 18 years of age or over on Thursday 10th October 2019

You have to be registered to vote by 24th September 2019, to vote in the referendum. You can check if you are registered to vote by calling our Helpline on 01273 471600.

Referendum Expenses

The Referendum expenses limit that will apply in relation to the Referendum is £2880.79. The number of persons entitled to vote in the Referendum by reference to which the limit has been calculated is 8859.

Specified Documents

The relevant regulations state that we must make available the following documents:

- The referendum version of the Newhaven Neighbourhood Plan
- The independent examiner's report on the draft Newhaven Neighbourhood Plan
- A summary of the representations submitted to the independent examiner
- A statement setting out that the District Council and the SDNPA believe that the Newhaven Neighbourhood Plan meets the basic conditions and relevant Regulations (included within the document known as the Decision Statement)
- A statement setting out general information as to town and country planning (including neighbourhood planning) and the referendum (included within the 'Newhaven Neighbourhood Development Plan: Voting Information for Referendum on 10th October 2019, Document)

These documents have been made available online at <https://www.lewes-eastbourne.gov.uk/planning-policy/neighbourhood-planning/> a webpage that contains additional information about the Newhaven Neighbourhood Plan.

Copies of the documents can also be viewed at the District Council's offices at Southover House, Southover Road, Lewes, BN7 1AB. The offices are open between 9am and 5pm during weekdays.