

Ditchling, Streat and Westmeston Neighbourhood Development Plan

Information Statement for Referendum on 19th April 2018



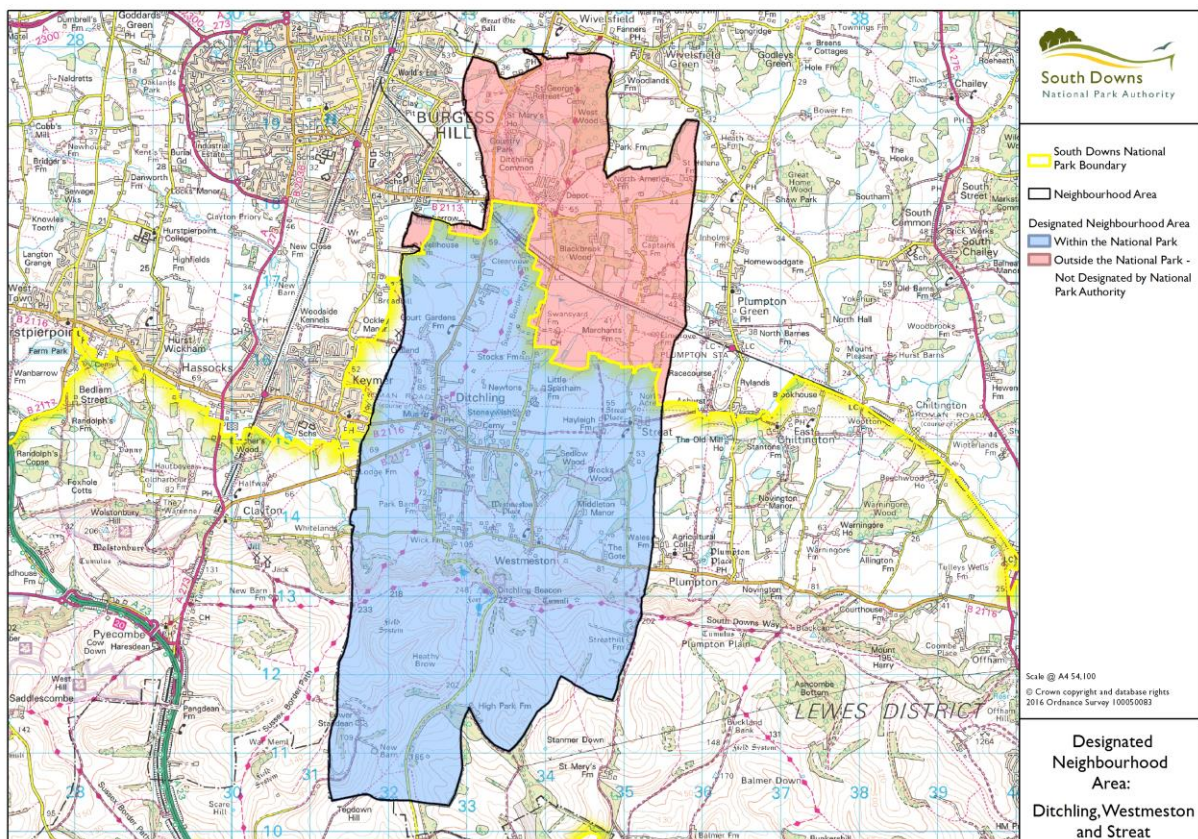
Introduction

A referendum on the Ditchling, Streat and Westmeston Neighbourhood Plan will be held on **Thursday, 19th April 2018**. The referendum will be conducted based on procedures which are similar to those used at local government elections.

The question to be asked in the referendum is:

‘Do you want Lewes District Council and the South Downs National Park Authority to use the neighbourhood plan for Ditchling, Streat and Westmeston Parishes to help them decide planning applications in the neighbourhood area?’

The neighbourhood area is the entirety of the parishes of Ditchling, Streat and Westmeston and is marked on the map below (outlined in black, shaded in red and blue):



Can I vote?

You can vote in the referendum if you live in Ditchling, Streat & Westmeston Parishes and:

- you are registered to vote in local council elections; and
- you are 18 years of age or over on **Thursday, 19th April 2018**.

You have to be registered to vote by **Tuesday, 3rd April 2018**, to vote in the referendum. You can check if you are registered to vote by calling our Helpline on 01273 471600.

Referendum Expenses

The Referendum expenses limit that will apply in relation to the Referendum is £2480.18. The number of persons entitled to vote in the Referendum by reference to which the limit has been calculated is 2003.

Specified Documents

The relevant regulations state that we must make available the following documents:

- The referendum version of the Ditchling, Streat and Westmeston Neighbourhood Plan
- The independent examiner's report on the draft Ditchling, Streat and Westmeston Neighbourhood Plan
- A summary of the representations submitted to the independent examiner
- A statement setting out that Lewes District Council and the South Downs National Park believe that the Ditchling, Streat and Westmeston Neighbourhood Plan meets the basic conditions and relevant Regulations (included within the document known as the Decision Statement)
- A statement setting out general information as to town and country planning (including neighbourhood planning) and the referendum (included within the 'Ditchling, Streat and Westmeston Neighbourhood Development Plan: Voting Information for Referendum on 19th April 2018, document)

These documents have been made available online at

<https://www.southdowns.gov.uk/planning/planning-policy/neighbourhood-planning/neighbourhood-development-plans/ditchling-westmeston-streat-neighbourhood-plan/> and <http://www.lewes-eastbourne.gov.uk/planning-policy/neighbourhood-planning/>, webpages that contain additional information about the Ditchling, Streat and Westmeston Neighbourhood Plan.

Copies of the documents can also be viewed at the South Downs National Park Authority's offices at the South Downs Centre, North Street, Midhurst, West Sussex, GU29 9DH. The offices are open between 9am and 5pm Monday to Thursday and 9am and 4.30pm Friday.

They can also be viewed at District Council's offices at Southover House, Southover Road, Lewes, BN7 1AB. The offices are open between 9am and 5pm during weekdays.