



EASTBOURNE

Carbon Neutral 2030

A Plan for Action



**The Climate Emergency Strategy Summary
and Guide to what YOU can do!**

Our commitment to action

Over a year ago we declared a climate emergency, and committed Eastbourne Borough to becoming carbon neutral by 2030. This is an ambitious proposal, but one that Eastbourne Borough Council is fully committed to.

The Declaration of the Climate Emergency was the Borough Council's public statement, that the work the Council and others, both locally and nationally, already undertake to mitigate and adapt to climate change must not only be ramped up, but needs to progress at pace. In order to support the Climate Emergency Declaration 'business as usual' cannot continue.

There is overwhelming scientific evidence that predicts catastrophic change across the world if global temperatures continue to rise, due to the release of carbon dioxide and other greenhouse gases into our atmosphere. Global temperatures have increased by 0.85 °C over the last 100 years (IPCC, 2013). This doesn't sound much but locally we should expect to see sea level rise affect low lying areas and more extreme rain and heat events.

We have seen how fast we can act, and make huge changes to our society when faced with the life or death situation that the Coronavirus pandemic has and continues to pose to us. But, we now need to acknowledge that the climate emergency will cause us to face a similar situation. However, in this case we have been given notice and are aware of what is coming. We still have the chance to reduce the impacts, but only if we act now to cut emissions and prepare our communities for the inevitable changes.



XR Families Eastbourne Pink Whale at the ECN2030 Launch Event

Helping Eastbourne
**waste less and
recycle more**



Environment First Recycling Campaign



The plan

The **Plan for Action** establishes the basis for the work programmes and actions that will deliver our goals and ambitions. It sets out how the Council will work in partnership with the Eastbourne ECO Action Network Community Interest Company (EEAN CIC) to address the causes and impacts of climate change in order to deliver Eastbourne Carbon Neutral 2030. The Council has a key role to play as a community leader, and through the services we provide but we cannot solve the problem alone. Residents and businesses must commit to change now, so we can mitigate the impacts of a changing climate, adapt and manage the risks to service provision, local communities, the natural environment, infrastructure and businesses.

As we publish this 'Plan for Action' heading towards the end of an eventful 2020, we, Cllr. David Tutt Leader of Eastbourne Borough Council, Cllr Jon Dow Lead Member for Climate Change together with Miles Berkley, Executive Director of the ECO Action Network, pledge the following:

- We will do everything in our power to support cross party action on climate change adaptation and mitigation.
- We will support the Eastbourne Eco Action Network CIC wherever we can.
- We will lead by example in the way we live our own lives, educate ourselves on the impacts of climate change and the changes we can make in our own lifestyles and share this with others.
- We will support local people and businesses as we embark on a green recovery after the devastating economic impact of Covid-19.



Cllr. David Tutt
Leader of
Eastbourne
Borough Council



Cllr. Jonathan Dow
Lead Cabinet Member
for Climate Change



Miles Berkley
Executive Director,
Eastbourne ECO
Action Network

The 2020 launch event

Eastbourne officially began its carbon neutral journey on January 18th 2020, with the launch of Eastbourne Carbon Neutral 2030 (ECN 2030) at the Welcome Building in the Devonshire Quarter. It was a hugely successful event with 40 exhibitors, around 1,000 visitors, and speakers from the NHS and Bespoke, Friends of the Earth and XR Eastbourne in addition to EEAN CIC Director Miles Berkley and Councillor Jonathan Dow.



There were 244 comments posted on the comments wall at the launch event and these have helped inform our choice of themes for the Plan for Action.

The majority of comments, 47% were related to the decarbonising of transport, and travelling around the town using low carbon public transport and by cycling. We understand how important this topic is to you.

The other key themes that emerged were; waste and recycling, energy and housing, tourism and biodiversity.

Overall, attendees were optimistic and keen to see projects delivered, but they also shared their concerns about the timescales and lack of resources we have to deliver such change at a local level.

LEFT The ECN2030 Launch speakers: (left to right) Dr. Scarlett McNally, NHS/Bespoke, EEAN CIC Executive Director Miles Berkley, Kira Hesse, XR Eastbourne and Alasdair Roxburgh, Director of Communities and Networks, Friend of the Earth, Cllr. Jonathan Dow, Lead Member for Climate Change

Since the launch event EEAN CIC has evolved, and is currently hosting 8 active project groups and has a membership of 400+ local people. You can see more of what the EEAN CIC is up to later in this plan.

If you want to find out more about taking action in your community you can visit www.ecoactioneb.co.uk/action



The vision

Food We have developed a local food economy and reduced food waste. Residents are enabled to make healthy choices and food poverty has been eliminated.

Climate adaptation We have delivered a sustainable town that can stand up to the future impacts of a changing climate.

Waste We have a clean town that enables residents and visitors to reduce waste, our recycling rates put us in top 25% of authorities nationally and we have reduced non-recyclable waste.

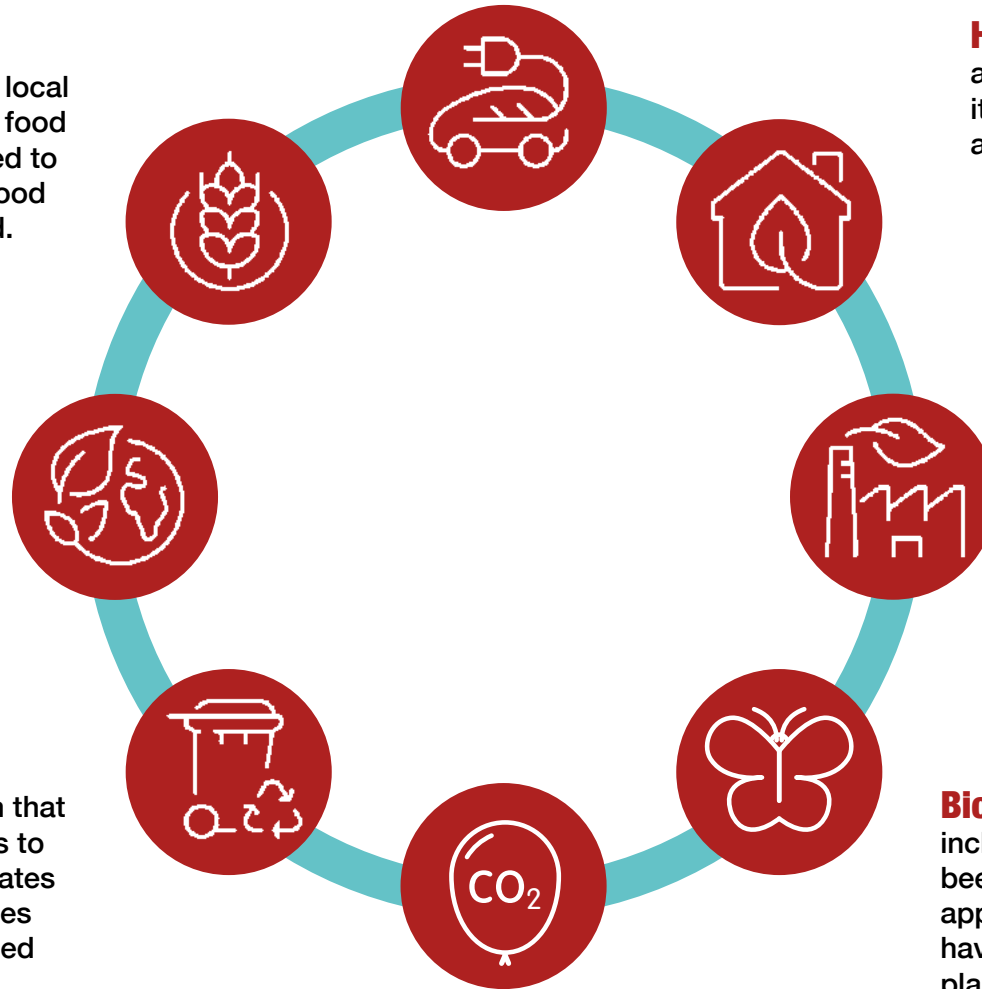
Transport Low and zero carbon travel is the natural choice throughout the town for residents, and for those visiting.

Housing & Energy Housing is as energy and water efficient as it can be, and everyone has an affordable clean energy supply.

Workplaces Business, tourism enterprises, other workplaces and public facilities have significantly reduced the carbon emissions from their premises, transport, daily operations and supply chain.

Biodiversity Existing green spaces, including the coast and the sea have been protected and enhanced where appropriate and new protected spaces have been created to enable animal and plant life to flourish.

Carbon Capture The town has delivered on capturing as much carbon as it emits through land and sea based measures.



The Borough baseline

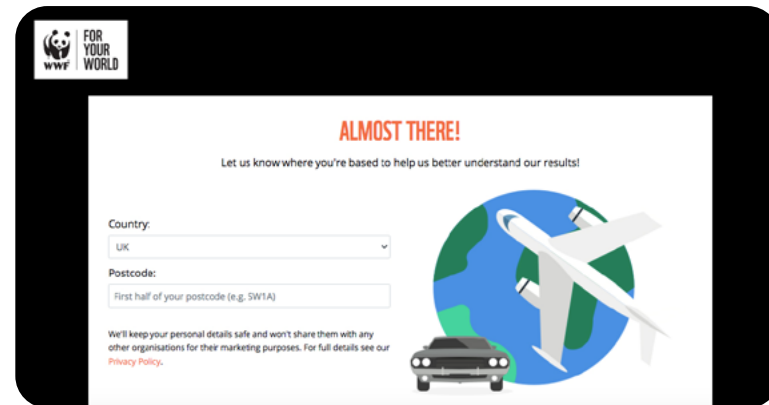
The Borough Baseline is the measure of carbon dioxide emissions within the town as of 2017. Eastbourne Borough Council uses the BEIS Dataset which is produced by central Government annually 2 years in arrears. This is a carbon dioxide only figure against which we will measure progress towards our 2030 target. You can access more recent data and data that uses carbon dioxide equivalents within our full Climate Emergency Strategy. Using carbon dioxide equivalents is more accurate as gases other than carbon dioxide cause global warming but this data is not yet used for national reporting. Eastbourne Borough Council, in line with other Local Authorities has access to an evolving data set which will enable more comprehensive reporting over the next few years.

In 2017 the town was responsible for direct emissions of approximately **296.7 kilo tonnes CO₂** (ktCO₂) – this came from energy used for heating, power and transport within the town's boundary, but it does not include the things we buy and consume which will have emissions within the items production, whether that be food, clothing or electrical goods. If we include consumption data the footprint would be much higher. However, many personal carbon footprint calculators accessed online do include 'consumption'.

**Eastbourne
Residents
Carbon
Footprint**

Based on BEIS data

2.87
TONNES CO₂



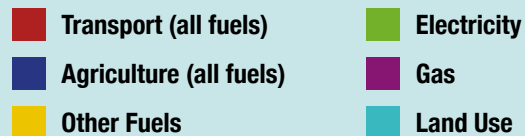
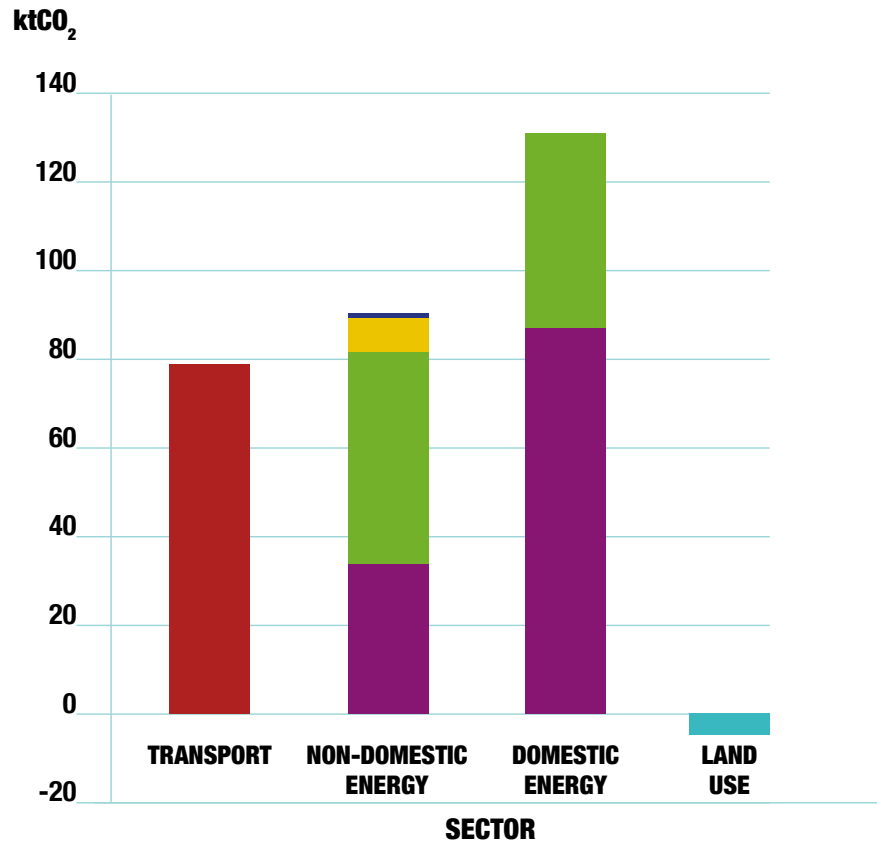
The image shows a screenshot of the WWF carbon footprint calculator website. At the top left is the WWF logo with the text 'FOR YOUR WORLD'. The main heading is 'ALMOST THERE!' in red. Below it, a sub-heading reads 'Let us know where you're based to help us better understand our results!'. There are two input fields: 'Country:' with a dropdown menu showing 'UK', and 'Postcode:' with a text box containing 'First half of your postcode (e.g. SW1A)'. To the right of these fields is a graphic of a globe with an airplane flying over it and a car below. At the bottom left, there is a small disclaimer: 'We'll keep your personal details safe and won't share them with any other organisations for their marketing purposes. For full details see our [Privacy Policy](#).'

You can try the WWF's calculator on their website at www.footprint.wwf.org.uk

The Borough baseline

296.7 ktCO₂

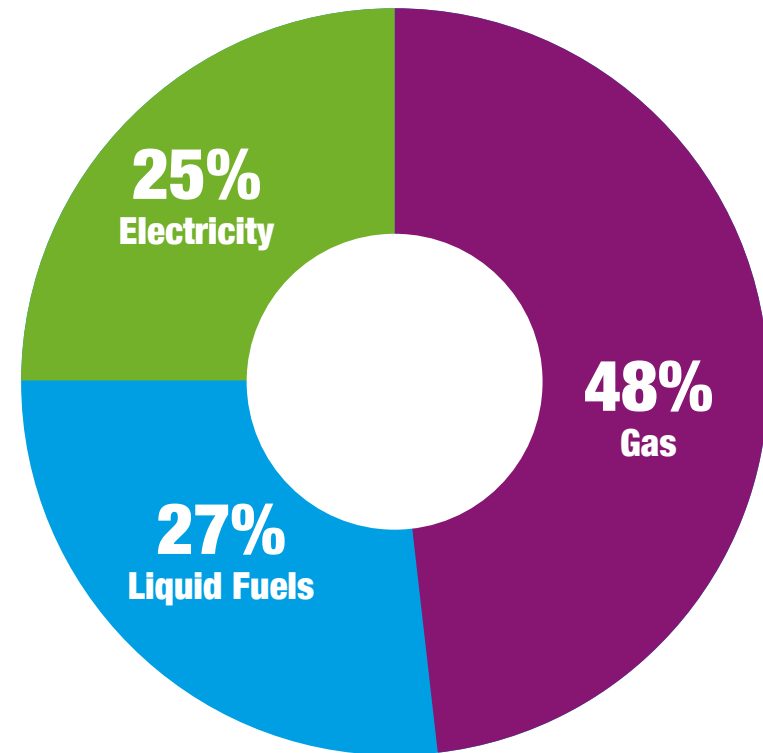
The town's **undeveloped land and green spaces absorbed** around 4.3 ktCO₂ or **1.5%** of borough emissions:



The Council baseline

3 ktCO₂e

The Borough Council was responsible for direct emissions of **3,047 tonnes CO₂** (just over 3 ktCO₂) for the 2018/19 financial year – this is approximately **1% of total town emissions**. Direct emissions include the council's use of gas, electricity and fuel for vehicles and equipment:



Council action

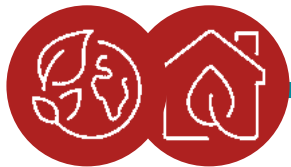
The council has set out in the Council Plan 2020-24 its desire to ensure Eastbourne is a great place to live, work and enjoy and has publicly committed to making Eastbourne Carbon Neutral by 2030. To deliver this we will ensure that carbon reduction and environmental sustainability is considered at every level of decision making within the organisation.

The council plays a key role in community leadership and enabling the long-term sustainability and resilience of our communities. We must lead by example and here you can see a few things we are doing

and some things we intend to do to enable the town to reach carbon neutrality by 2030.

We cannot achieve ECN 2030 alone. Our sphere of direct influence is small but we have a big influence indirectly through: leading by example; the policy decisions we make; our education role and our communication channels; **and by enabling the community to act.**

If you want to read more about the actions we are undertaking please click [here](#) to see the full strategy and action plan or visit our web page www.lewes-eastbourne.gov.uk/climatechange



We will decarbonise our social housing stock by 2030 currently we have around 3,400 properties emitting about **2 tCO₂e** each per year.

We will invest directly where possible and enable, local energy generation.

We will improve local resilience to climate change through planning policy.



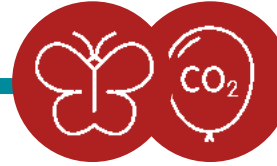
We will decarbonise our fleet saving around **800 tCO₂e** per year.

We will work with partners to deliver better cycling, walking and bus infrastructure.



We will purchase renewable electricity and reduce energy consumption in all our assets.

This will save at least **774 tCO₂e** before energy reduction initiatives.



We will publish and implement our Biodiversity Strategy and **enable local tree planting and nature projects.**

We will have a network of interlinking wildlife corridors throughout the town.



We will increase food growing capacity in the borough and incorporate food growing into our housing projects.

We will work with our partners to enable local food networks.



We will undertake a comprehensive public consultation to engage residents in recycling more and producing less waste.

We will target a recycling rate of **45%** in the year 2021/22.

Personal action: how can you help?



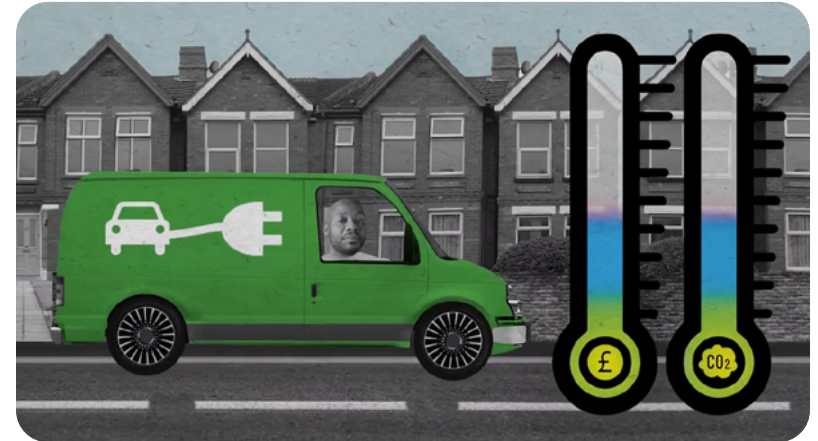
Thinking about the climate emergency can sometimes be **daunting**, and on an individual level it can be hard to know where to start taking action.

But there are **many small actions** that can be quite straightforward and take no or little change to our lifestyles.

These may feel inconsequential to the larger issues surrounding the climate emergency. However, they can have a **cumulative effect** with a greater **positive impact** than the sum of their parts. If we want to achieve our goal of a carbon neutral Eastbourne, we cannot rely on a small group of 'other' people to do it for us. Reaching this goal will be quicker if the majority of the town do what they can, where and when they can.

Join a local or national community action group, like the Eastbourne ECO Action Network to work together with your neighbours and help make your community and Eastbourne better and healthier **for everyone**.

Not all individual actions involve spending more money or effort than you would do normally. In fact many can save you money in the long-term. Carbon neutral actions often encompass the idea of **voting with your 'wallet'**. Choosing goods and services with your carbon footprint in mind shapes businesses for the future in how they operate and what they sell.



Watch the New Leaf video for changes we can make in our everyday life at www.ecoactioneb.co.uk/resources



Buy local, keep wealth local, save money and carbon!

Did you know?



It uses **2x** the energy to treat waste water than to supply it

We had a **30%** increase in harmful air particulates between 2017-18

£800+
A household will spend on average over £800 per year on energy

Green space makes up over **40%** of the town with a further **17%** as gardens

Every new t-shirt emits **2kg** CO₂e
a new pair of jeans emits **33kg**

Only **35%** of our household rubbish is recycled

63% of journeys to work are less than 3 miles

45% of the Borough is currently at risk of tidal flooding and sea level is predicted to rise

Personal action – what you can do



Make a bug hotel to leave outside and grow some plants in any space you have – like a window box

Every household helps to plant a tree locally (49,000 new trees total)

Think of a short journey you do in a vehicle and walk or cycle it **half** the time you usually do it

Block up drafts and reduce your heating thermostat by **1°C** in Winter



Use less water at home – take **2 minute** showers and save rainwater for watering plants

Buy **one** less t-shirt and **one** less pair of jeans per year

Make energy saving changes at work, just like you do at home to **save 15%** of energy currently used

Take part in Meat-Free Monday and **reduce** your meat and dairy consumption

**CO₂e Savings:
it all adds up!**

We could reduce emissions by nearly 90,000 tonnes!



Click [here](#) to find out even **MORE** you can do!



Small changes add up if we all do a little we can change a lot

Community action – The Eastbourne ECO Action Network CIC



Since our launch on 19th November 2019, our EEAN network has recruited 775 engaged supporters. Bringing together people with the skills and enthusiasm to help our town achieve carbon neutrality by 2030.

Key highlights since our formation include:

- Building an engaging online presence enabling us to reach out and be resilient throughout the COVID-19 period
- Collaborating with Eastbourne Borough Council. Launching the ECN2030 Campaign on January 18th at the Welcome Building Devonshire Park attended by around 1,000 local citizens
- Creating a compelling short video “A New Leaf” to help people understand the steps they can take to reduce their own carbon footprint
- Lobbying for action on better cycle paths. Asking our local councils for an integrated Transport Plan for Eastbourne and District. This opens the door to the decarbonisation of local transport, responsible for 24% of local CO₂e emissions
- Galvanising local volunteers, and fundraising to start mass tree planting with an aim to plant 11,000+ trees in the next 12 months
- Launching the world’s first smart CO₂e monitoring and reduction portal for Small Medium Enterprises – taking the pain and turning it into a CO₂e reduction gain.

Over the next year we’re prioritising building our capacity to deliver large scale projects across the community, this will significantly reduce our local carbon footprint.



If you want to join in by taking action you can join Eastbourne ECO Action Network on their website www.ecoactioneb.co.uk/action



What our key projects and campaigns can do with your help:



Transport

ACTION

Advocating for a local Transport Strategy to Decarbonise.
Lobbying for improvements to cycling infrastructure, and a bus partnership.
Promoting a local Car Club using EV to reduce car dependency across Eastbourne.

CO₂ REDUCTION POTENTIAL

6,122 tonnes of CO₂e per year if there's a 50% reduction in 3-mile commuting journeys.

BENEFITS

- Reduced congestion, a car in slow traffic expels 3 times as much CO₂e as on a clear road. Cash savings in fuel costs, and maintenance.
- Active travel improves health.
- A bus can remove 40-70 cars off the road.
- A car club rents EV's by the hour saving money spent on fuel, insurance maintenance, and purchase of vehicle.

Housing & Energy

ACTION

Installing 5MW of solar within Eastbourne's boundaries.

CO₂ REDUCTION POTENTIAL

1,000 tonnes of CO₂e per year.

ACTION

ECOTRICITY campaign to switch to a green energy provider.

CO₂ REDUCTION POTENTIAL

7,500 tonnes of CO₂e per year.

BENEFITS

- Installing 5MW would double our town's current renewable energy production reducing dependency on fossil fuel energy sources.
- Switching to 100% renewable electricity saves 1.5 tonnes of CO₂e per year for the average home. If 5,000 homes do this, that's 7,500 tonnes saved.

Workplaces

ACTION

Campaigning for workplaces in Eastbourne to support remote working for 20% of their staff.

CO₂ REDUCTION POTENTIAL

2,449 tonnes of CO₂e per year if we reduce 3 mile commutes by 20%.

ACTION

Launching UK's first smart data portal helping SMEs measure their carbon footprint, make savings, and reduce emissions.

CO₂ REDUCTION POTENTIAL

5,409 tonnes of CO₂e per year if 20% of SMEs make savings & use renewable energy.

BENEFITS

- Homeworking reduces commuting travel, saves fuel costs and reduces CO₂e.
- There are 3,005 SMEs in Eastbourne (businesses with less than 50 employees). The average SME emits 9 tonnes of CO₂e from electricity use. Our partner portal will give access to a sustainability platform, toolkit and scoring system, and a comparison data energy passport.

Education

ACTION

Working with educational institutions, and their wider communities to reduce their carbon footprint .
Creation of EcoEd2030, a collaborative eco education network that supports schools in reducing their carbon footprint and that of their communities.

CO₂ REDUCTION POTENTIAL

If schools reduced their 2019/20 energy consumption by just 10%, we would save 137 tonnes of CO₂e per year.

BENEFITS

- Improving air quality and increased fitness through 'walking buses', and improved cycle routes.
- Reduced premises carbon emissions, and increased recycling rates.
- More tree planting, and re-wilding on school land.

What our key projects and campaigns can do with your help:



Food

ACTION

Campaigning to help people switch to a plant-based diet.
Establish a retail hub for locally sourced affordable food.

CO₂ REDUCTION POTENTIAL

If just 10% of Eastbourne's population changes to a plant-based diet, that would save c10,000 tonnes of CO₂ per annum.

BENEFITS

- People's health could improve with lower risks of cardiovascular disease, cancers or diabetes.



Waste

ACTION

A campaign to buy less 'fast fashion', recycle and reuse existing clothing.

ACTION

Recycle and Reuse campaign.

CO₂ REDUCTION POTENTIAL

If 10% of our population reduces new clothing purchases by 50%, we'll save 2,500 tonnes of CO₂e per year.

BENEFITS

- Using what you already have saves both time and money.
- Recycling/reusing saves clothing from going to landfill and can earn you some money. Donating to charity shops, and buying from them, helps the local community.



Climate adaptation & Carbon capture

ACTION

We have plans for mass tree planting, with c11,790 to be planted in the next 12 months, and 5,000 per year after this.

CO₂ REDUCTION POTENTIAL

4,300 tonnes of CO₂ per year by 2030.

BENEFITS

- Research shows being around trees reduces our blood pressure and relieves stress.
- Trees absorb water, alleviating flooding, and providing a wildlife habitat boosting biodiversity.

BELOW Catch 22 National Citizenship Volunteers starting a community tree nursery at the Forest School in the Park, Gildredge Park.

