

Chailey Neighbourhood Development Plan

**Information Statement for
Referendum on
6th May 2021**



Lewes District Council

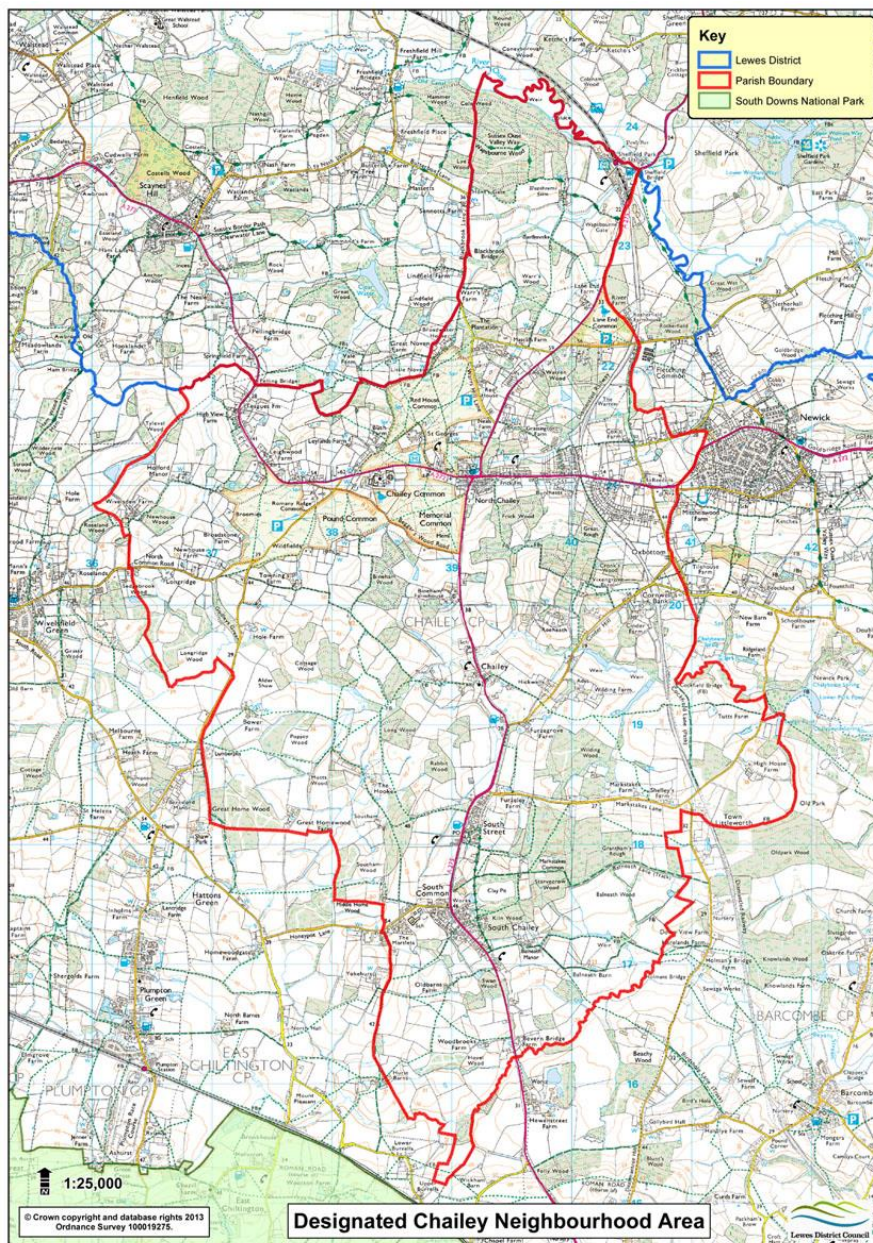
Introduction

A referendum on the Chailey Neighbourhood Plan will be held on Thursday, 6th May 2021. The referendum will be conducted based on procedures which are similar to those used at local government elections.

The question to be asked in the referendum is:

Do you want Lewes District Council to use the neighbourhood development plan for Chailey Parish to help them decide planning applications in the neighbourhood area?’

The neighbourhood area is the entire area and is marked in the map below:



Can I vote?

You can vote in the referendum if you live in Chailey and:

- you are registered to vote in local council elections; and
- you are 18 years of age or over on Thursday 6th May 2021

You have to be registered to vote by 19th April 2021, to vote in the referendum. You can check if you are registered to vote by calling our Helpline on 01273 471600.

Referendum Expenses

The Referendum expenses limit that will apply in relation to the Referendum is £2500.30. The number of persons entitled to vote in the Referendum by reference to which the limit has been calculated is 2344.

Specified Documents

The relevant regulations state that we must make available the following documents:

- The referendum version of the Chailey Neighbourhood Plan
- The independent examiner's report on the draft Chailey Neighbourhood Plan
- A summary of the representations submitted to the independent examiner
- A statement setting out that the District Council believes that the Chailey Neighbourhood Plan meets the basic conditions and relevant Regulations (included within the document known as the Decision Statement)
- A statement setting out general information as to town and country planning (including neighbourhood planning) and the referendum (included within the 'Chailey Neighbourhood Development Plan: Voting Information for Referendum on 6th May 2021, Document)

These documents have been made available online at <https://www.lewes-eastbourne.gov.uk/planning-policy/neighbourhood-planning/> a webpage that contains additional information about the Chailey Neighbourhood Plan.