

ANNEX 1: Maps

Chailey Neighbourhood Development Plan

SHAPING CHAILEY

Submission version

2018-2030

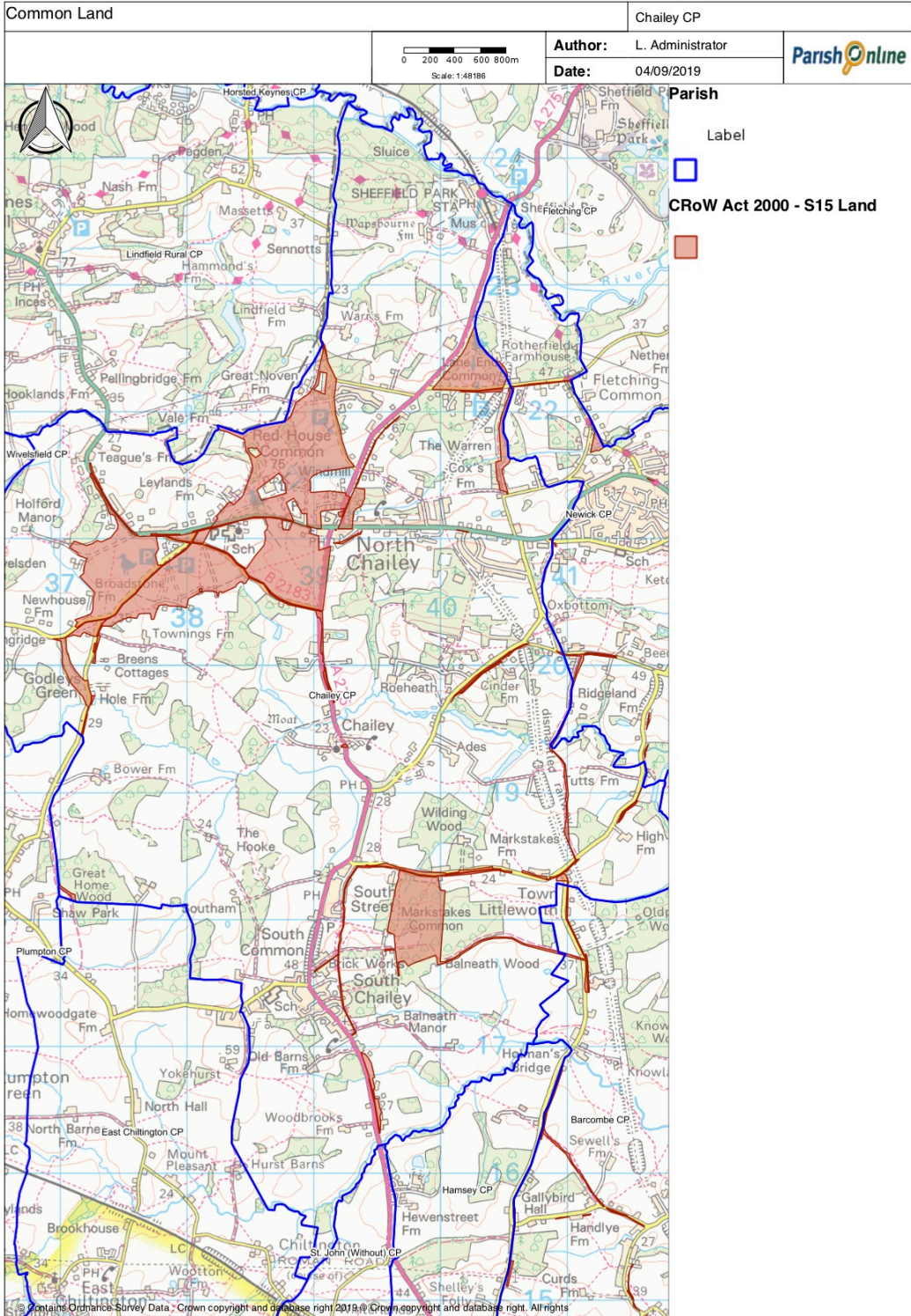
Published by Chailey Parish Council for Submission Consultation

under the Neighbourhood Planning (General) Regulations 2012

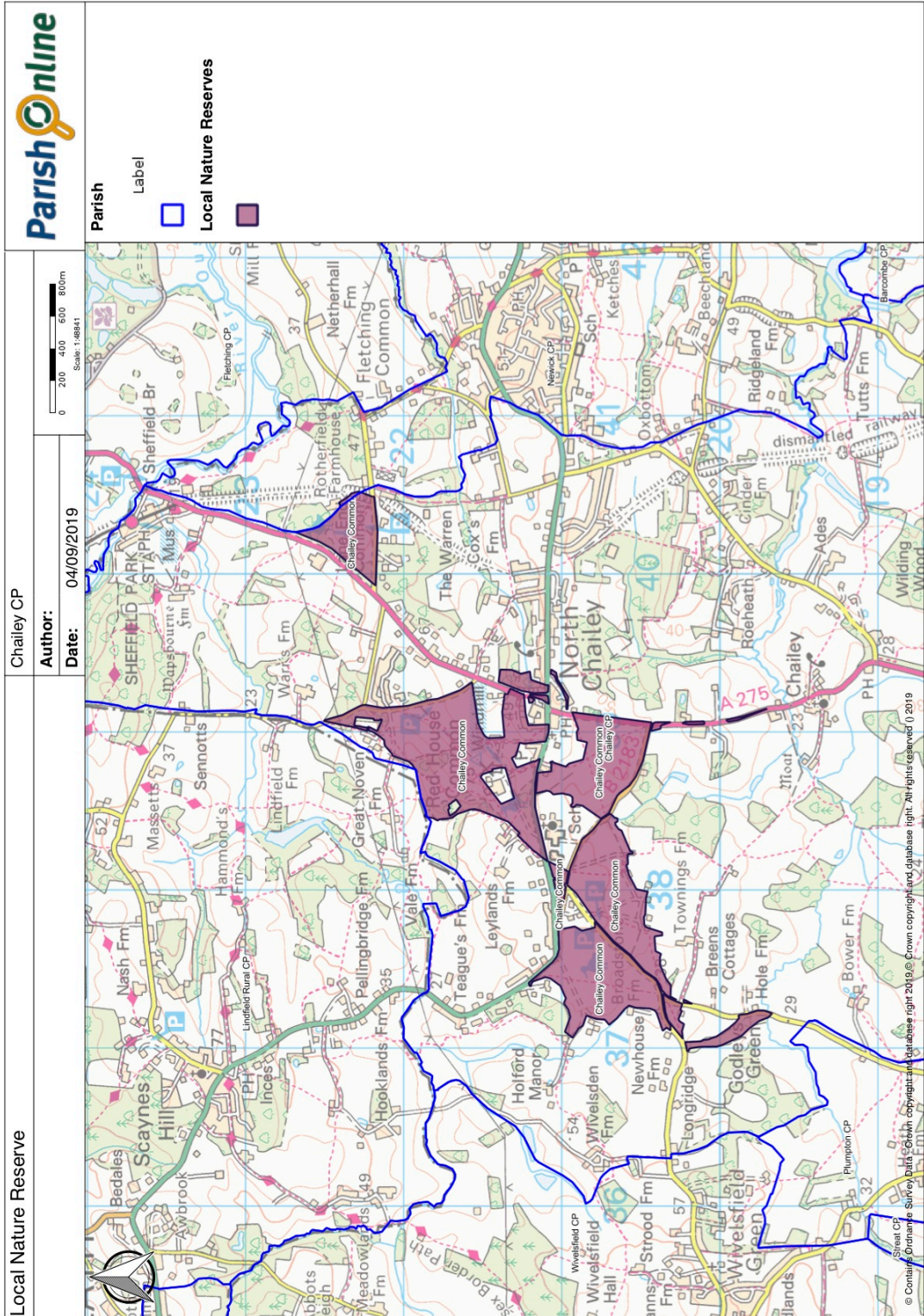
and in accordance with EU Directive 2001/42.

Table of Contents

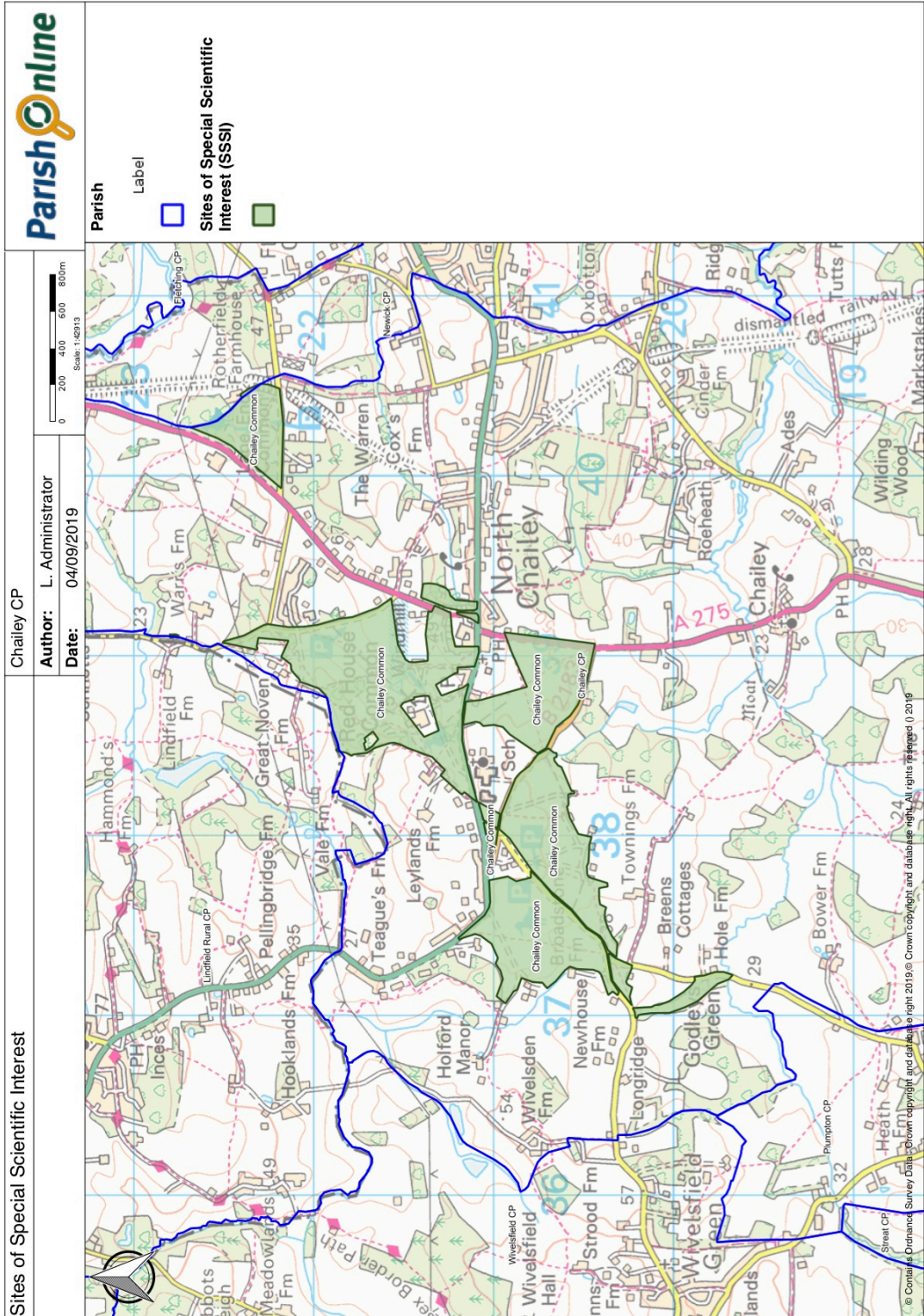
- Map 1 – Area Designation Plan
- Map 2 – Chailey Common
- Map 3 – Chailey Local Nature Reserve
- Map 4 – Chailey’s SSSI (Site of Special Scientific Interest)
- Map 5 – Natural England’s SSSI Impact Risk Zones
- Map 6 – Chailey Green Conservation Area
- Map 7 – St George’s Conservation Area
- Map 8 – North Common Development Boundary
- Map 9 – S. Common & S. Street Development Boundaries
- Map 10 - North Common Settlement
- Map 11 – South Common Settlement
- Map 12 – South Street Settlement
- Map 13 – Cinder Hill Settlement
- Map 14 – Footpaths and Rights of Way
- Map 15 – Ancient Woodland in Chailey
- Map 16 – Listed Buildings (Heritage Assets)



Map 2
Common Land in shown Brown

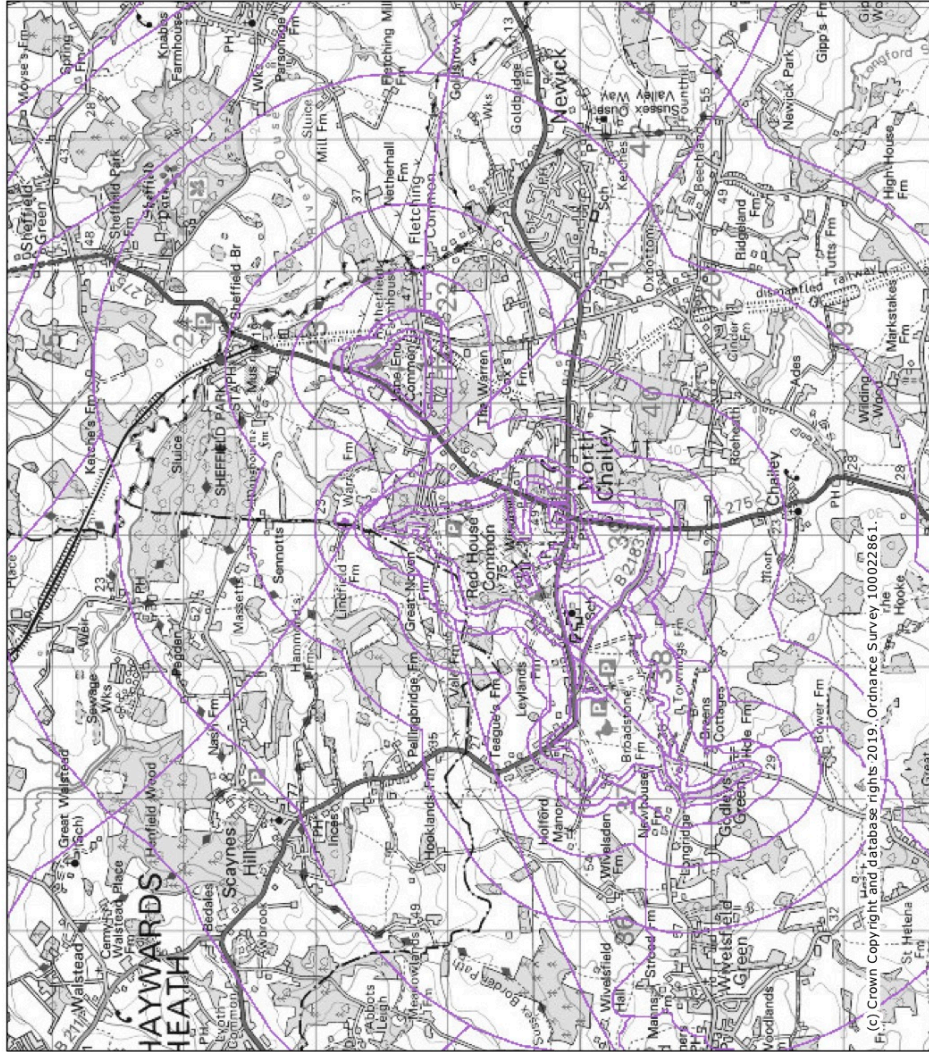


Map 3
Chailey Local Nature Reserve, shown mauve

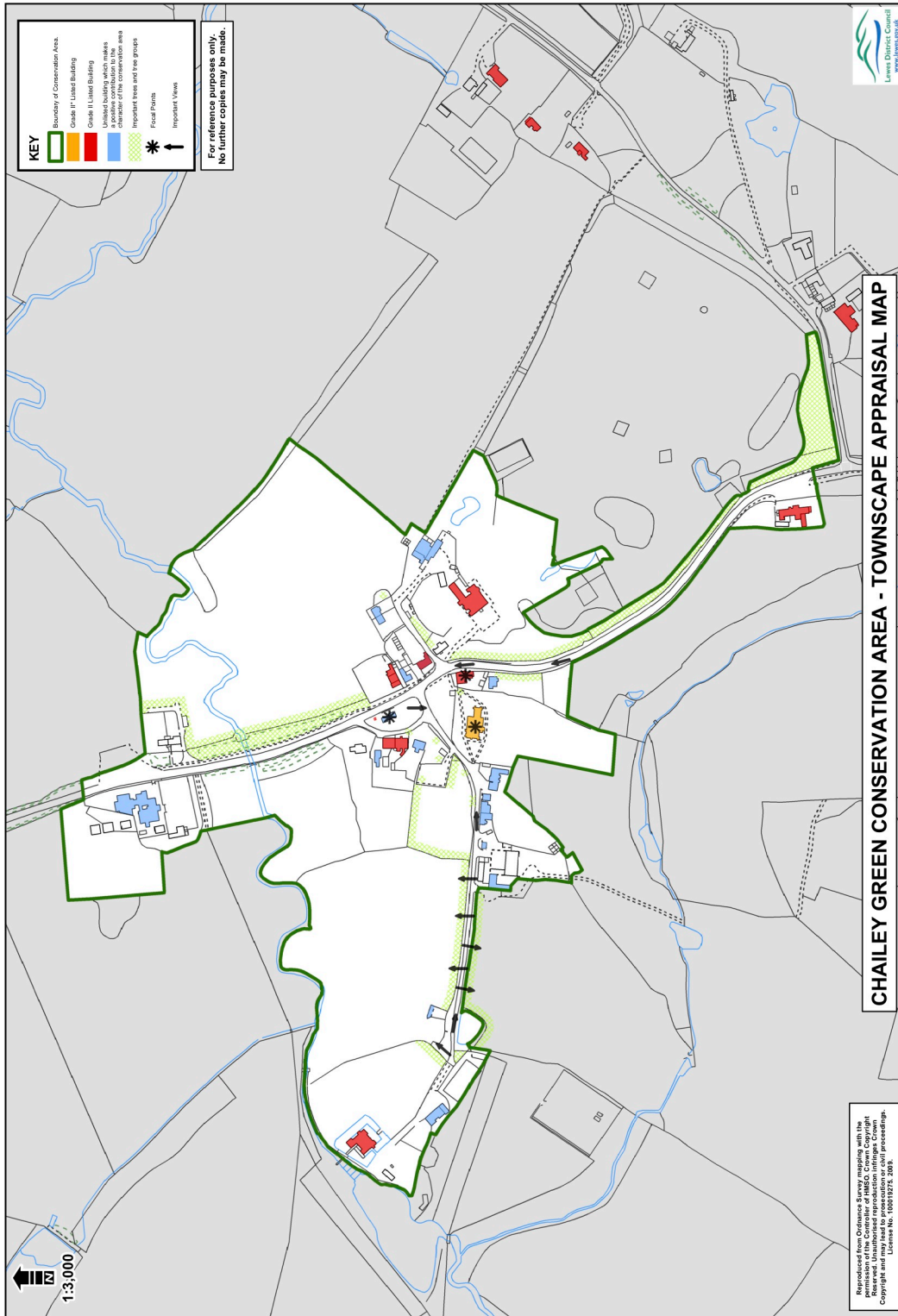


Map 4
 Site of Special Scientific Interest (SSSI) in Green

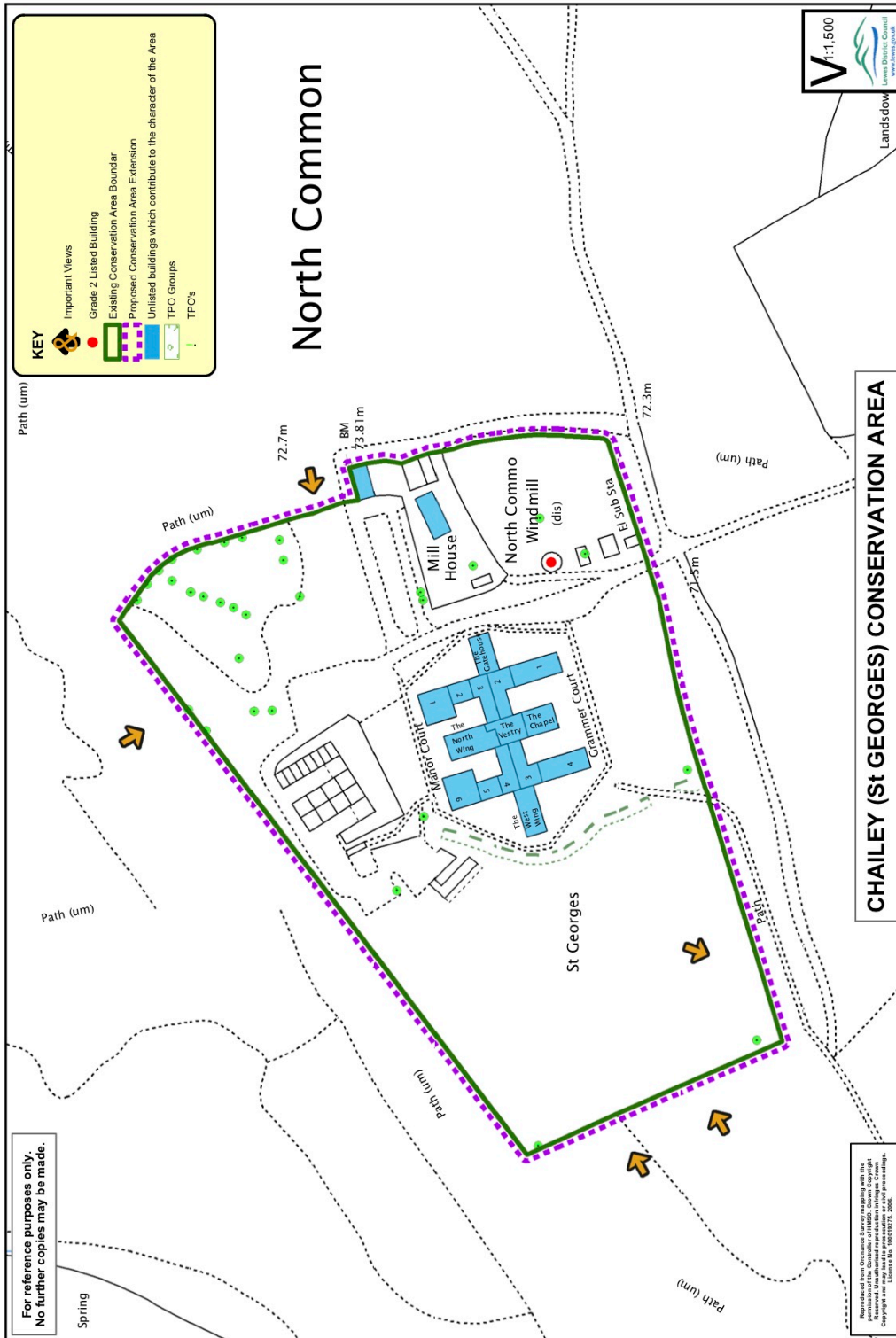
MAGiC Chailey Common SSSI Impact Risk Zones



Map 5
 SSSI Impact Risk Zones



Map 6
Chailey Green Conservation Area



Map 7
St George's Conservation Area

Lewes District Council
LEWES DISTRICT POLICIES MAP
Inset Map 12: North Challey

Key

- District Boundary
- Parish Boundary
- Plan Area
- Local Wildlife Site
- Site of Special Scientific Interest
- Local Nature Reserve
- Ashdown Forest 7km zone

Lewes Core Strategy: Local Plan Part 1 (May 2016)

- CP-11: Conservation Areas

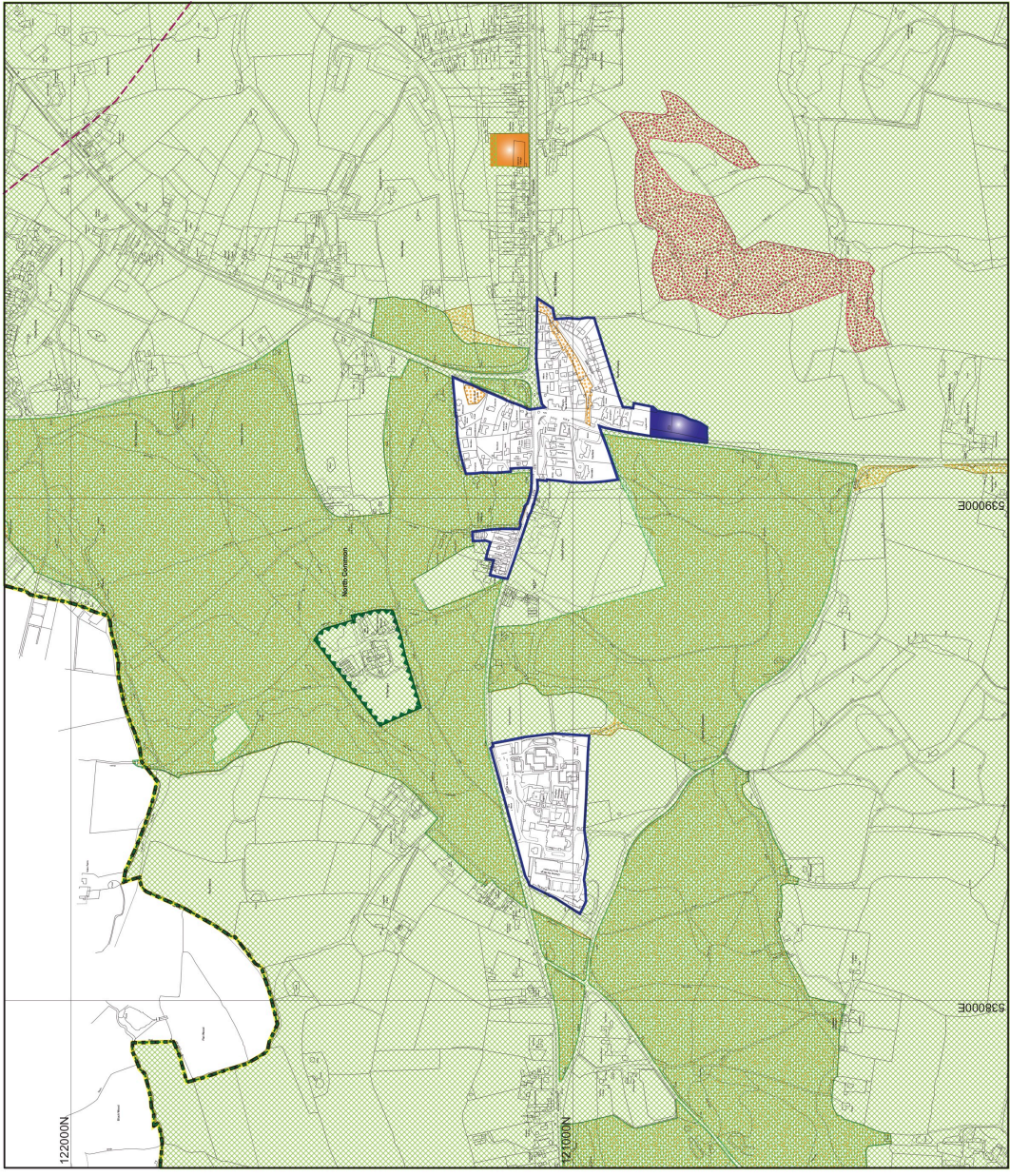
Lewes Local Plan Part 2 (December 2018)

- DM1: Planning Boundary
- Countryside Policies (Policies DM2, DM3, DM4, DM5, DM6, DM7, DM8, DM9, DM10, DM11, DM12)
- CH01: Land at Glendene Farm, Station Road, Challey
- CH02: Land at Layden Hall, East Grinstead Road, Challey

Date: December 2018
 Scale: 1 : 5,000 @ A2

0 60 120 180 240 m

© Crown Copyright and database rights 2018
 Ordnance Survey 100019751, Lewes District Council



Map 8
 North Common Development Boundary

Lewes District Council
LEWES DISTRICT POLICIES MAP
Inset Map 7: South Challey

Key

- Parish Boundaries
- Local Wildlife Site

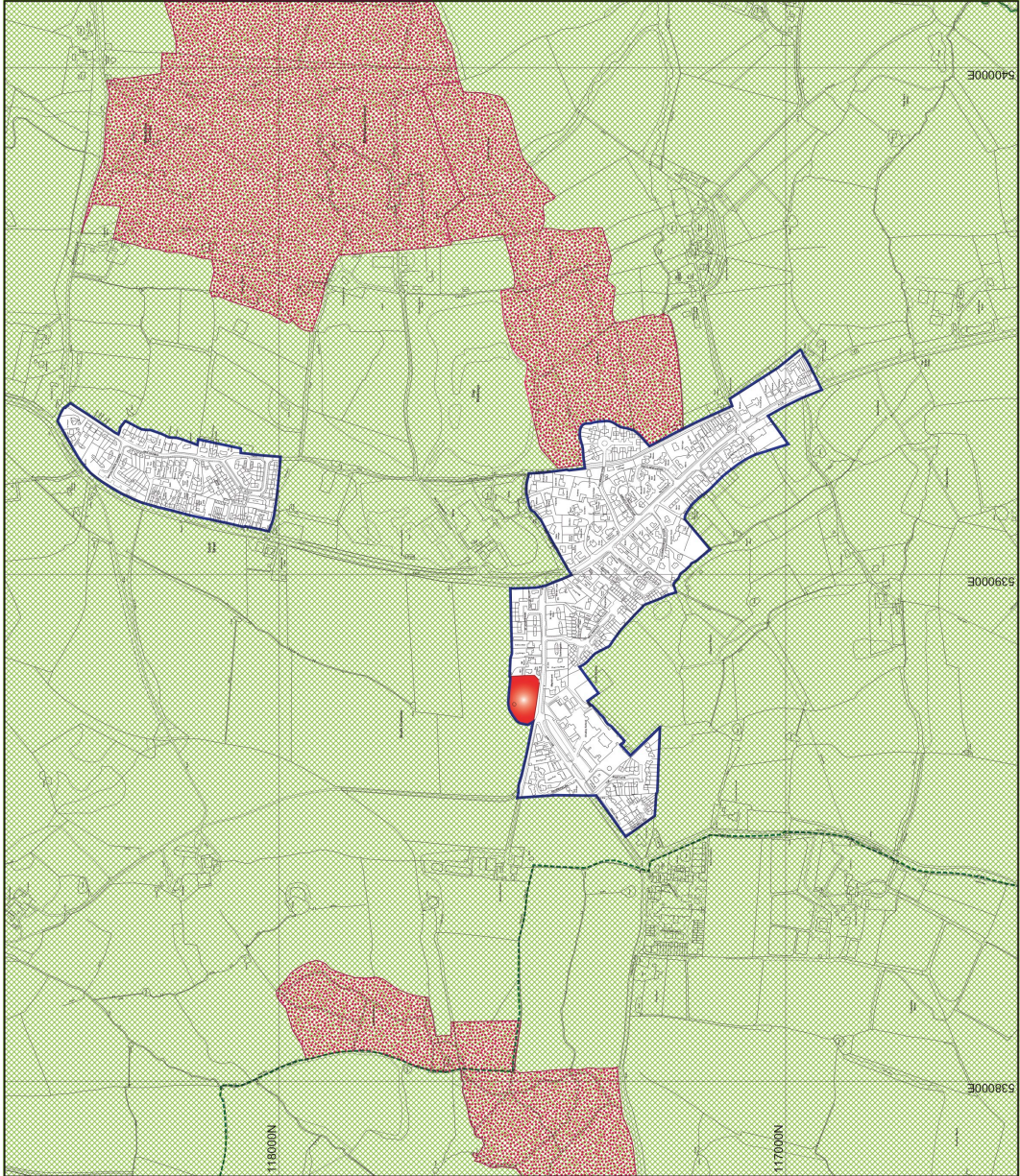
Lewes Local Plan Part 2 (December 2016)

- DM1: Planning Boundary
- Countryside Policies (Policies DM2, DM3, DM4, DM5, DM6, DM7, DM9, DM10, DM11, DM12)
- CH03: Land at Mill Lane, Challey (South)

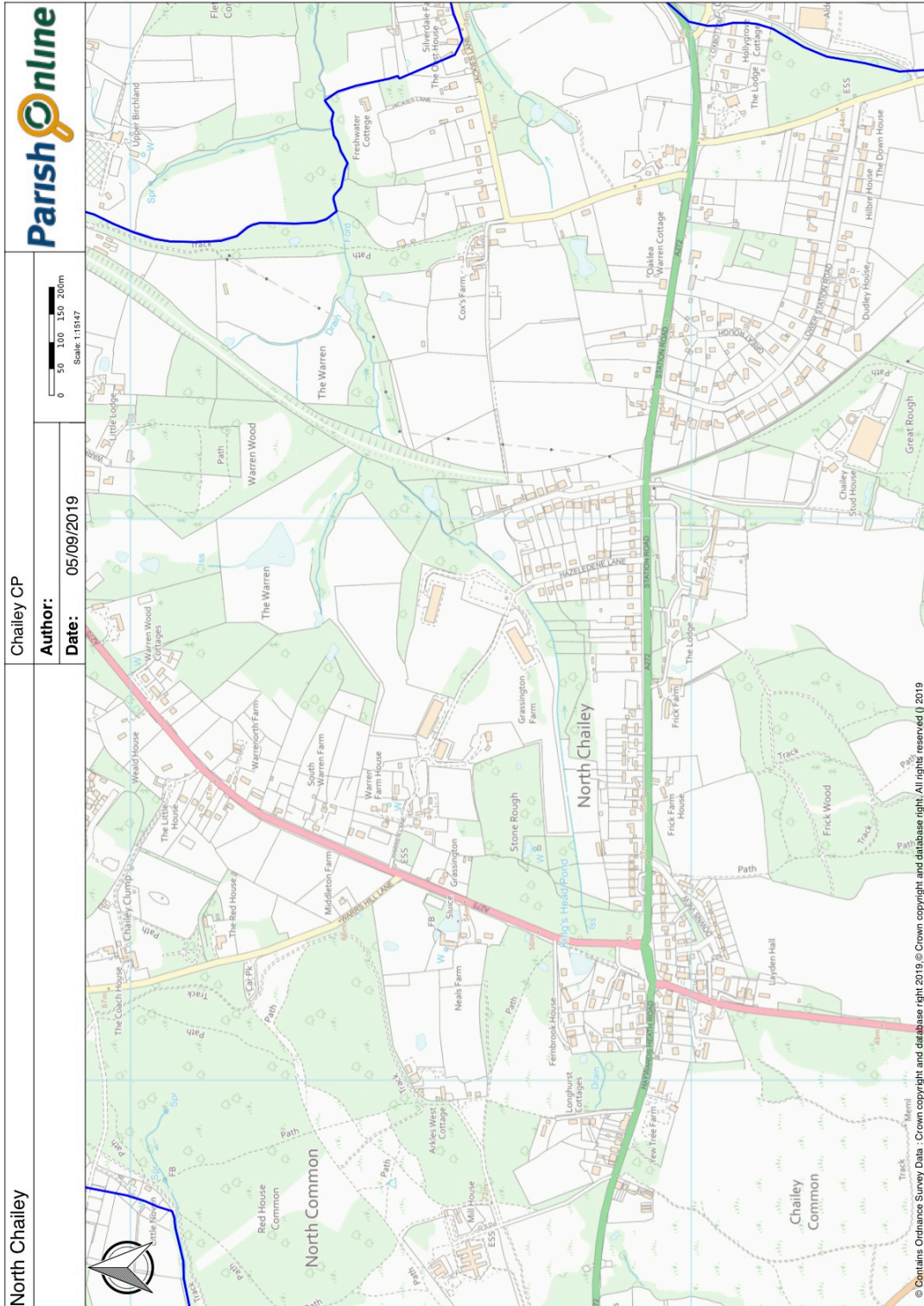
Date: December 2018
 Scale: 1 : 5,000 @ A2

0 60 120 180 240 m

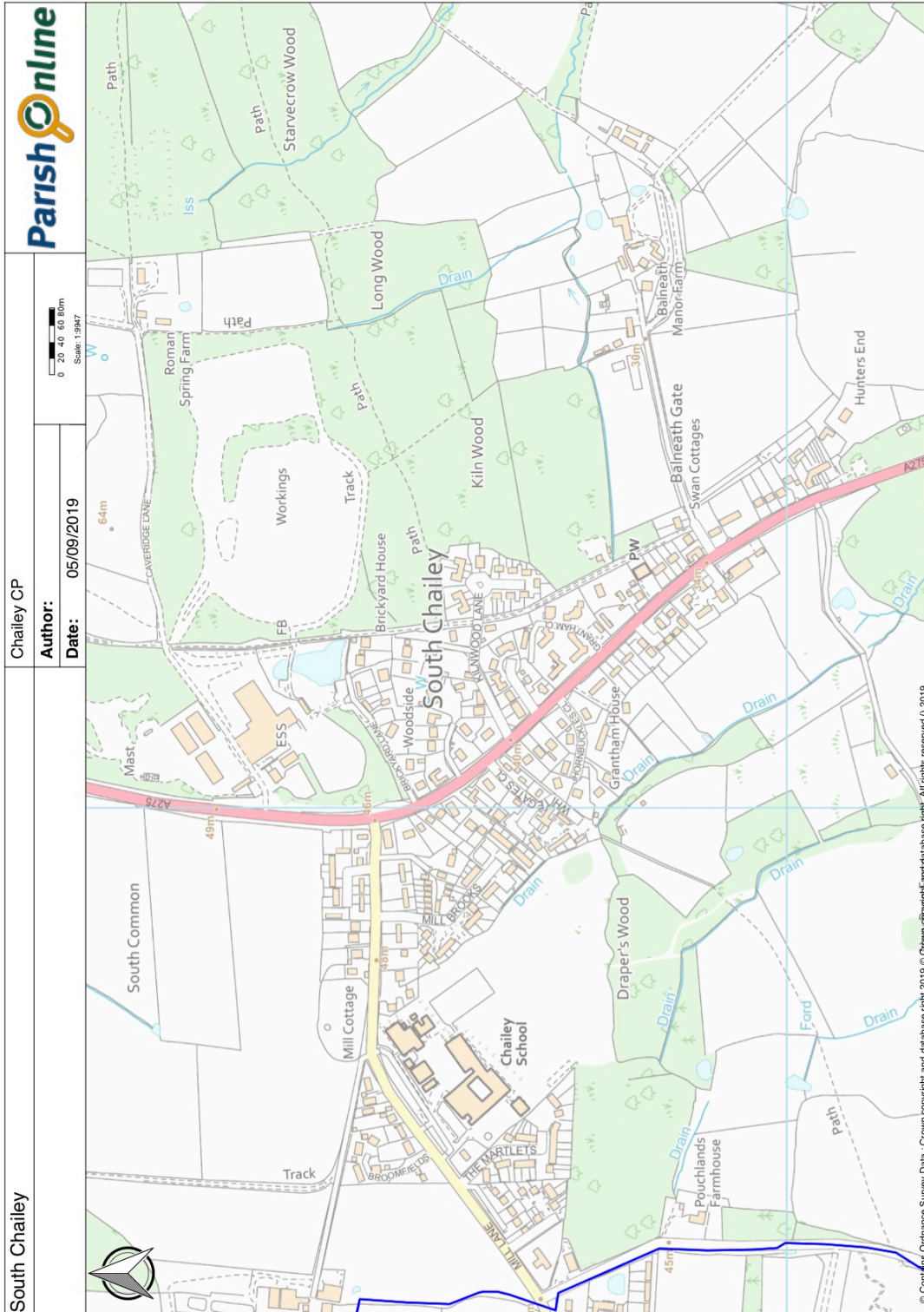
© Crown Copyright and database rights 2018
 Ordnance Survey 100019751 for Lewes District Council



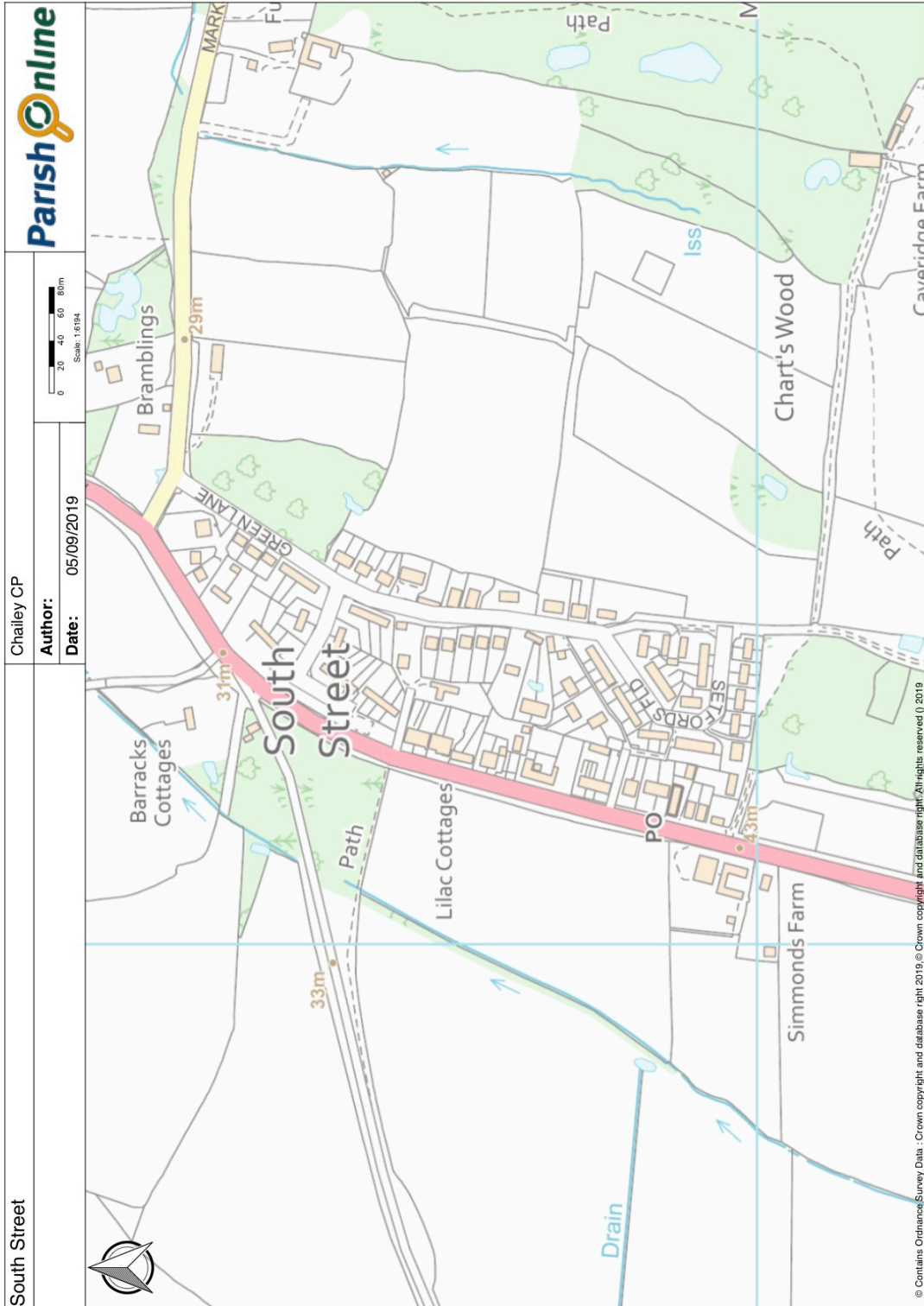
Map 9
 South Common & South Street Development
 Boundaries



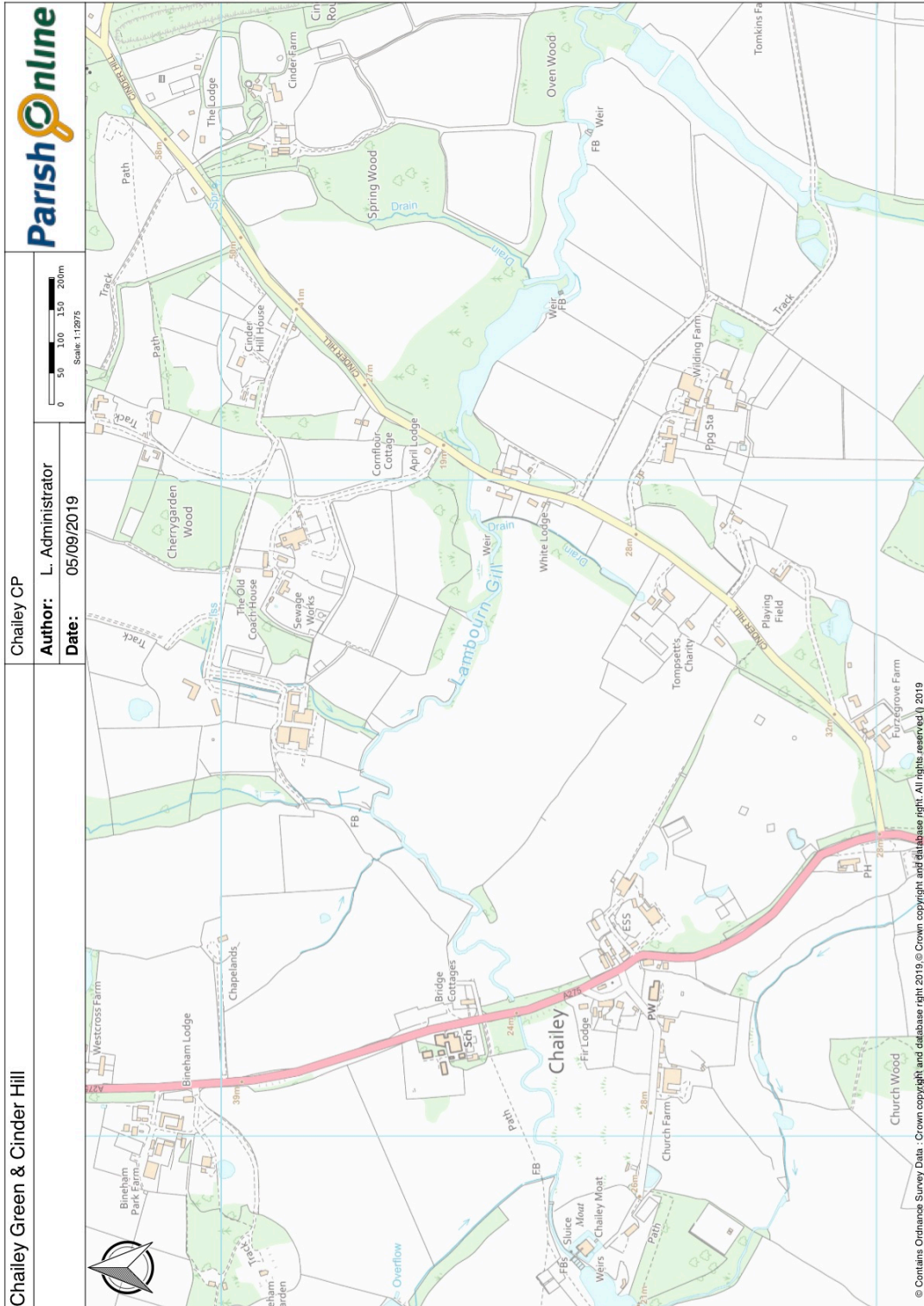
Map 10
North Chailey Settlement



Map 11
 South Chailey Settlement

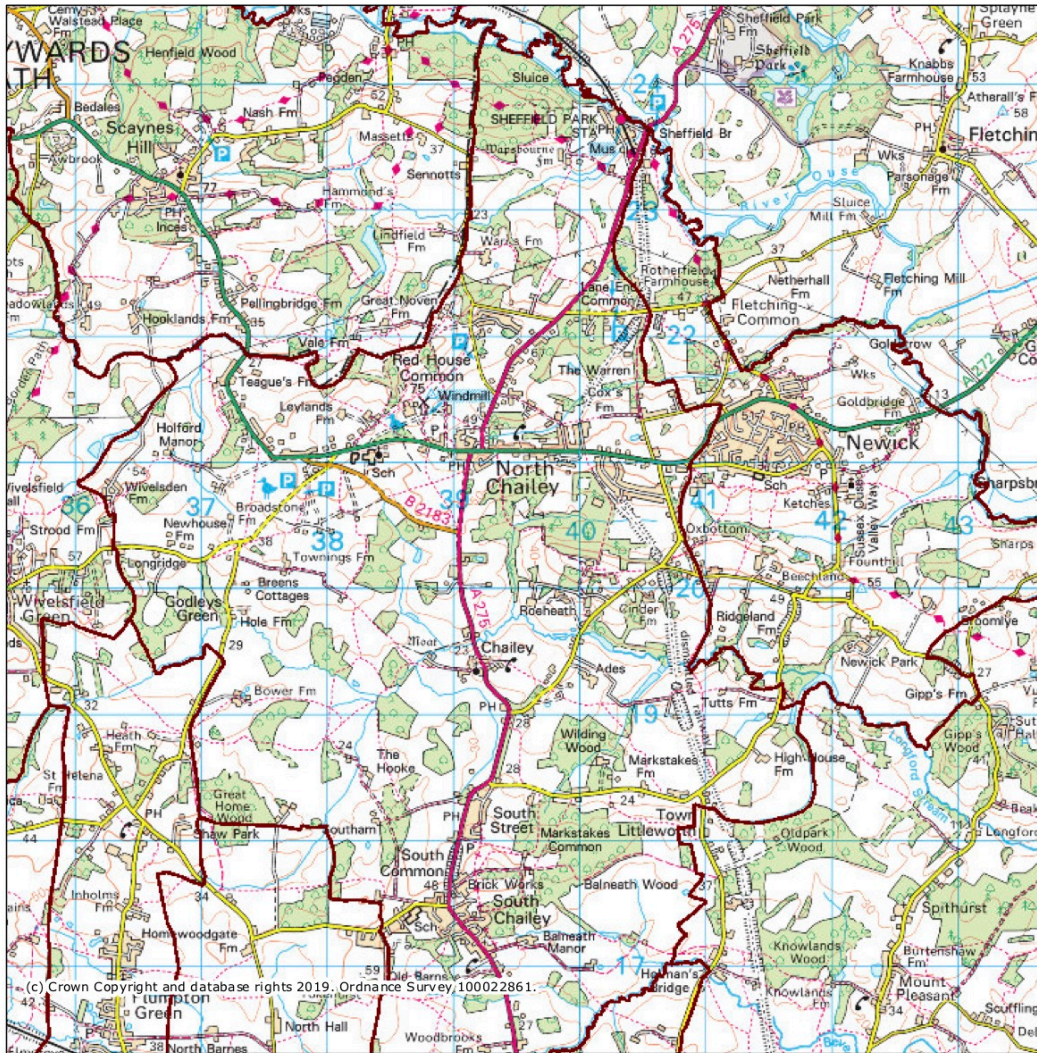


Map 12
South Street Settlement



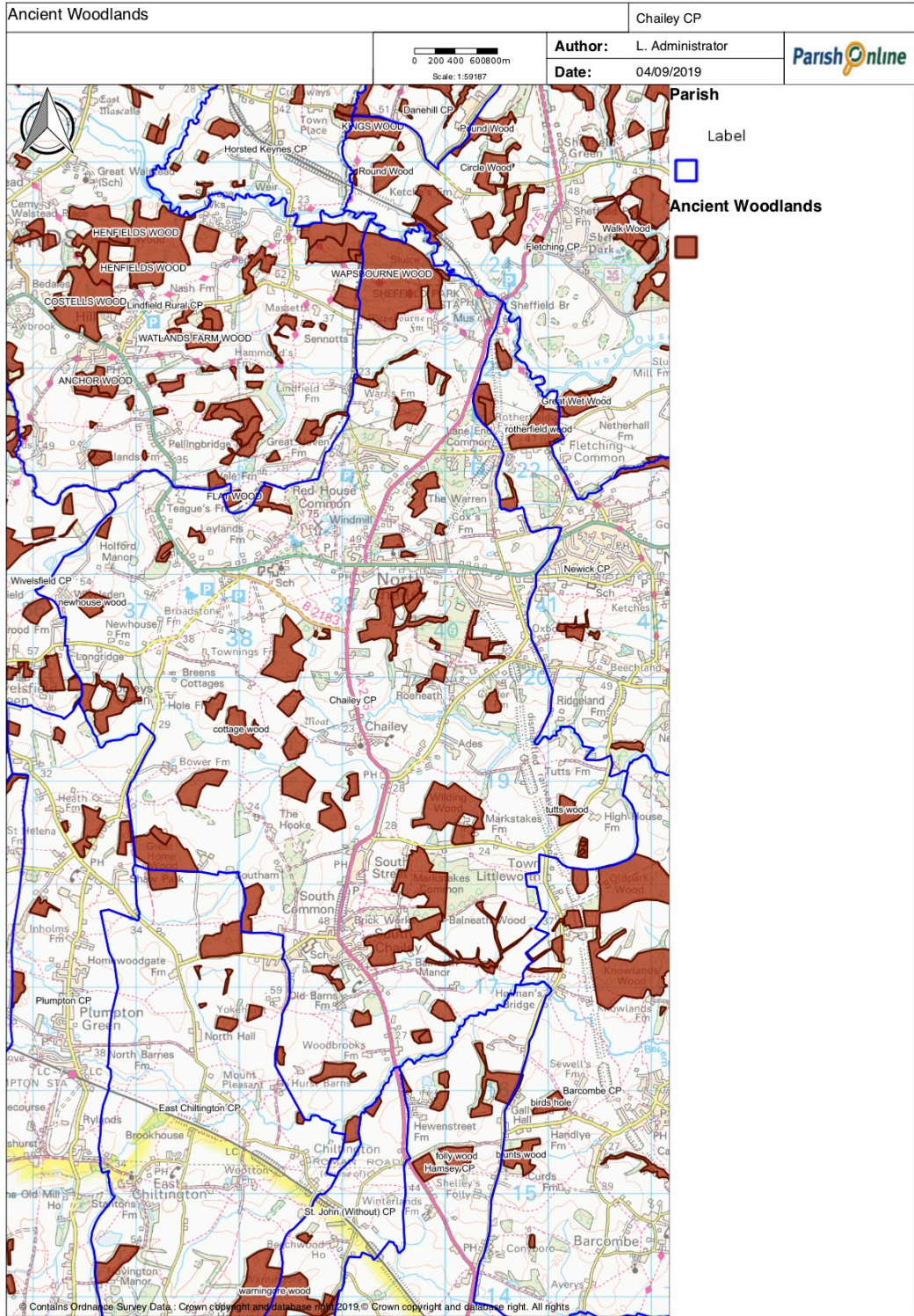
Map 13
 Cinder Hill & Chailey Green Settlement

MAGiC Parish with Footpaths shown in red

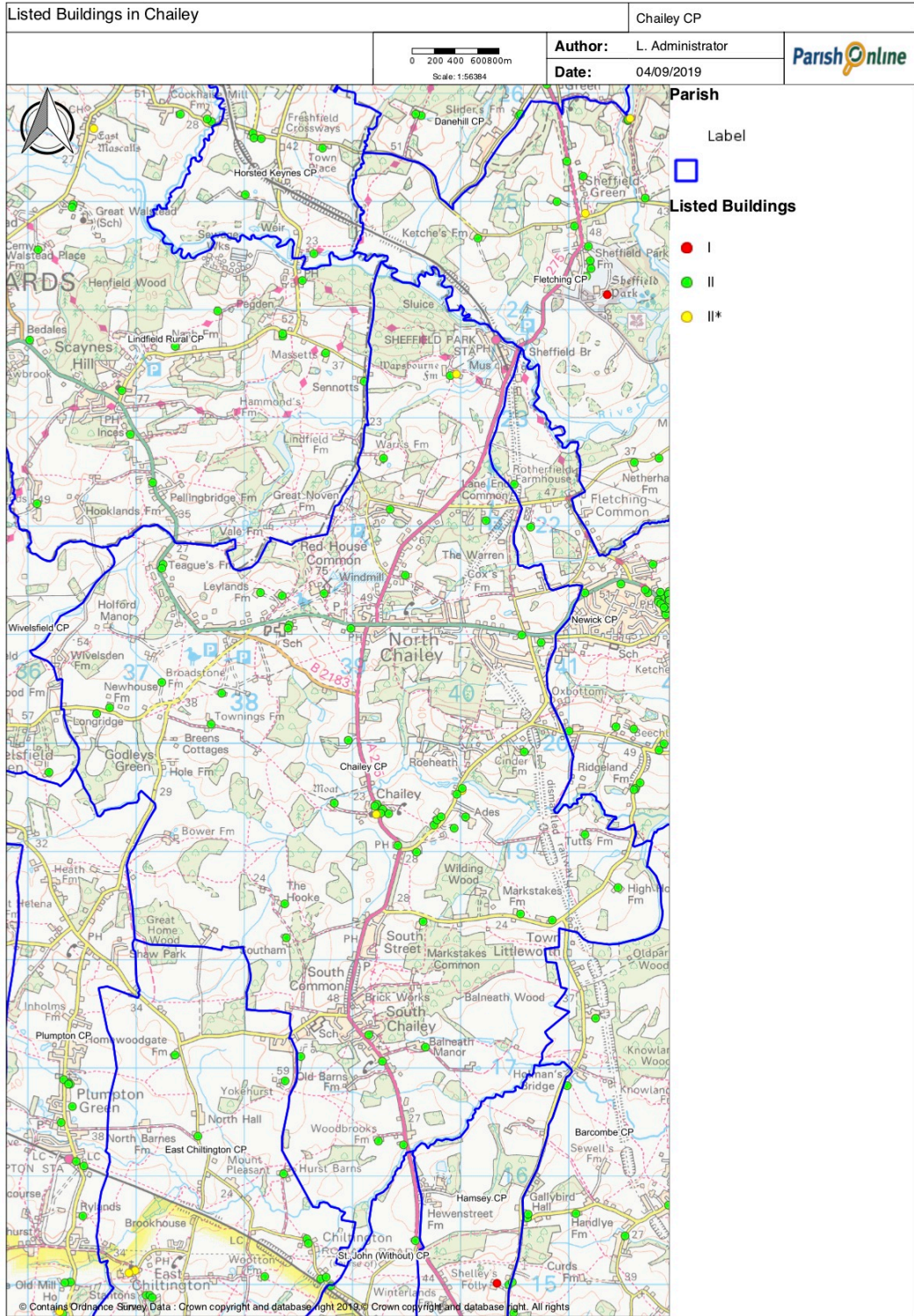


<p>Legend</p> <p> Parishes (GB)</p>	<p>0 1 2 km</p>
<p>Projection = OSGB36 xmin = 531200 ymin = 115000 xmax = 548000 ymax = 125900</p> <p>Map produced by MAGiC on 5 September, 2019. Copyright resides with the data suppliers and the map must not be reproduced without their permission. Some information in MAGiC is a snapshot of the information that is being maintained or continually updated by the originating organisation. Please refer to the metadata for details as information may be illustrative or representative rather than definitive at this stage.</p>	

Map 14
Footpaths and Rights of Way



Map 15
Ancient Woodland



Map 16
Locations of Listed Buildings