



Lewes District Council

Lewes District Council and South Downs National Park Authority

**Town & Country Planning Act 1990
Neighbourhood Planning Regulations (General) Regulations 2012**

Designation of Chailey Parish as a neighbourhood area

Lewes District Council received from Chailey Parish Council, under Regulation 5 of the above Regulations, an application to designate the whole parish as a neighbourhood area for preparing a neighbourhood plan.

A copy of the application, including a map of the area was available on Lewes District Council's website (<http://www.lewes.gov.uk/planning/19084.asp>) and the Council's offices at Southover House, Lewes during working hours.

Comments were invited on whether Chailey Parish is an appropriate neighbourhood area between Friday 9th January and Friday 20th February 2015. After considering the representations and under Regulation 7 of the above Regulations, we have designated Chailey Parish as a neighbourhood area to allow Chailey Parish Council to prepare a Neighbourhood Development Plan. The area is mapped overleaf.

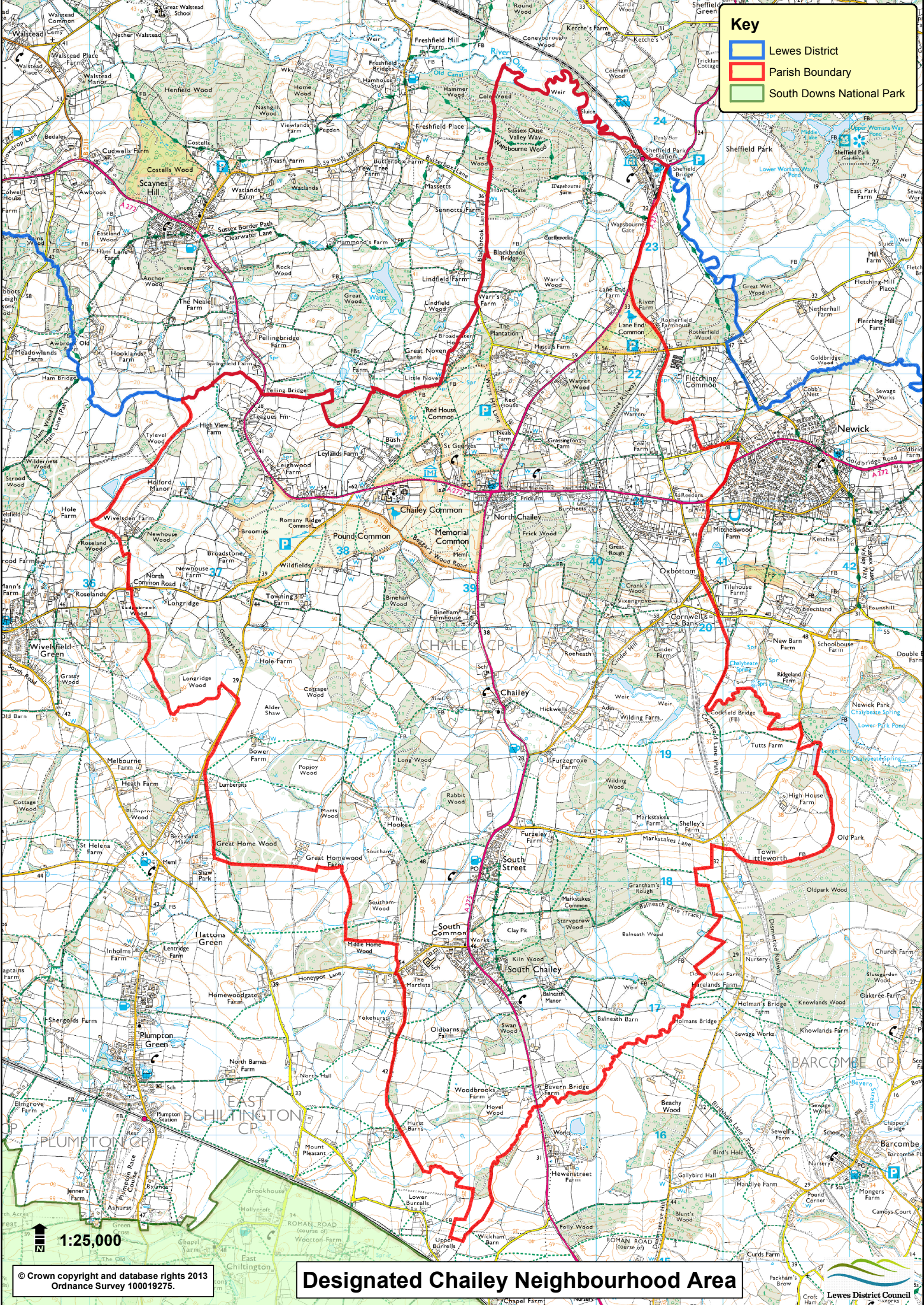
Nazeya Hussain
Director of Business Strategy and
Development

Tom Jones
Lead Councillor for Strategy and
Development

Tuesday 17th March 2015

Key

- Lewes District
- Parish Boundary
- South Downs National Park



1:25,000

© Crown copyright and database rights 2013
Ordnance Survey 100019275.

Designated Chailey Neighbourhood Area

