

© Crown copyright and database rights 2014
Ordnance Survey 100019275.








1:5,000

0 50 100 200 300 Meters

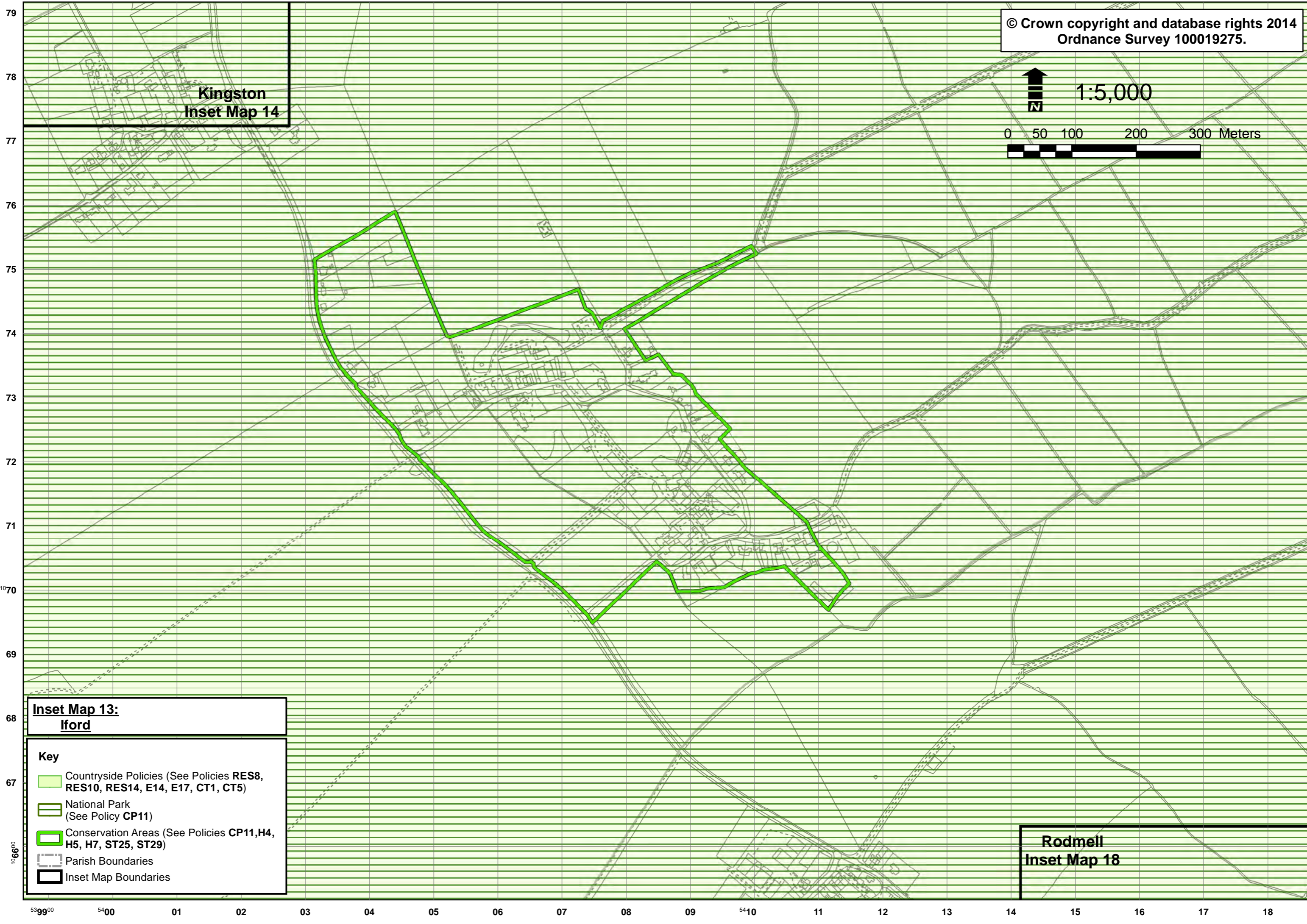


**Kingston
Inset Map 14**

**Inset Map 13:
Iford**

- Key**
-  Countryside Policies (See Policies RES8, RES10, RES14, E14, E17, CT1, CT5)
 -  National Park (See Policy CP11)
 -  Conservation Areas (See Policies CP11, H4, H5, H7, ST25, ST29)
 -  Parish Boundaries
 -  Inset Map Boundaries

**Rodmell
Inset Map 18**



539900 5400 01 02 03 04 05 06 07 08 09 5410 11 12 13 14 15 16 17 18