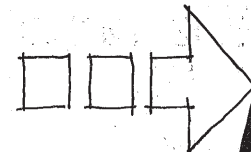
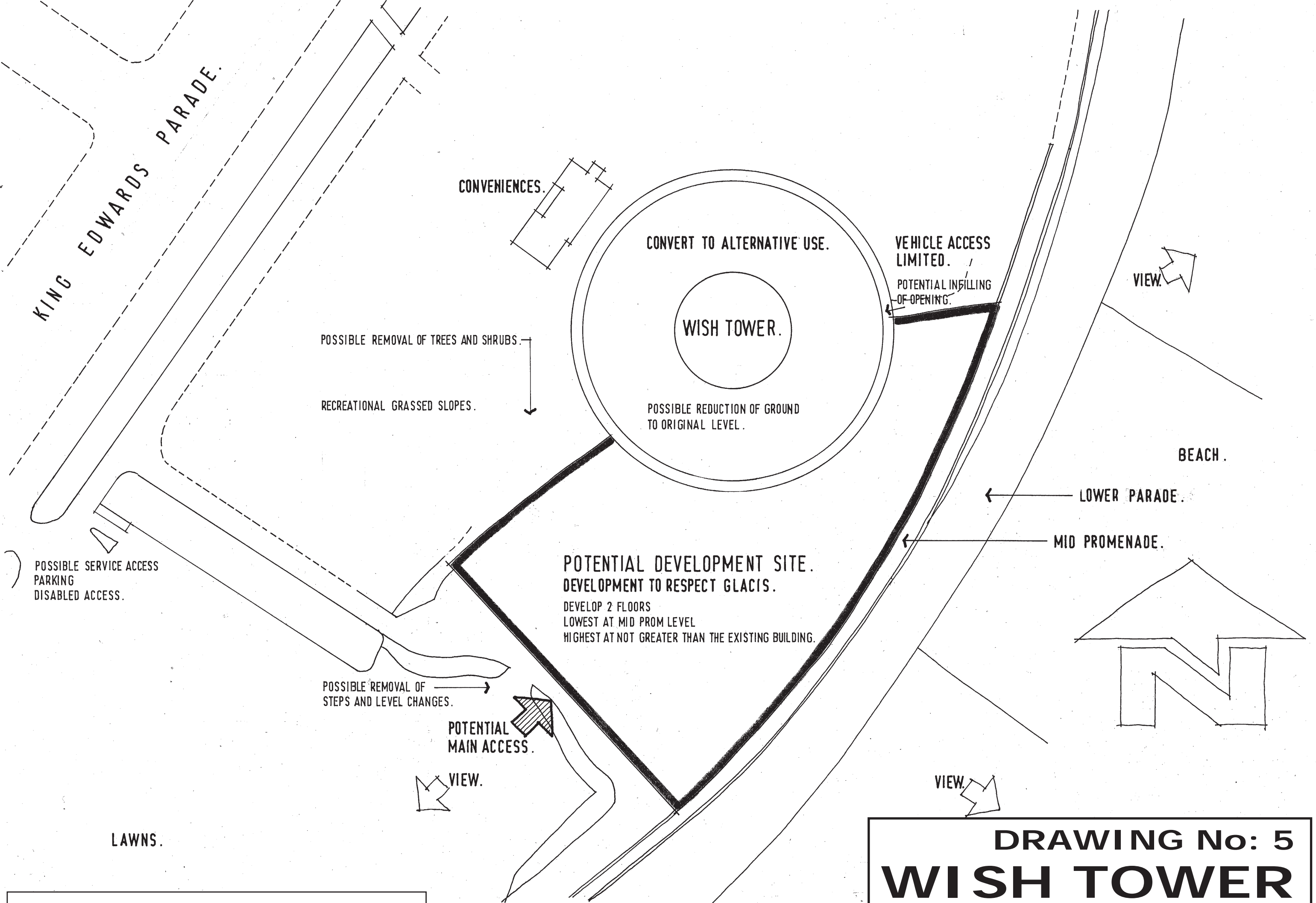


WISH TOWER.

POTENTIAL EXTENT OF DEVELOPMENT SITE.



DRAWING No: 4
WISH TOWER
MAXIMUM SITE AREA WITHIN WHICH DEVELOPMENT 1: 200 AT A3
OPTIONS COULD BE ACCOMMODATED
N.B. Subject to the advice contained within the Conservation Strategy
and consultation with English Heritage



KING EDWARDS PARADE.

CONVENIENCES.

CONVERT TO ALTERNATIVE USE.

WISH TOWER.

VEHICLE ACCESS LIMITED.
POTENTIAL INFILLING OF OPENING.

VIEW.

POSSIBLE REMOVAL OF TREES AND SHRUBS.

RECREATIONAL GRASSED SLOPES.

POSSIBLE REDUCTION OF GROUND TO ORIGINAL LEVEL.

BEACH.

LOWER PARADE.

MID PROMENADE.

POSSIBLE SERVICE ACCESS PARKING DISABLED ACCESS.

POTENTIAL DEVELOPMENT SITE.
DEVELOPMENT TO RESPECT GLACIS.

DEVELOP 2 FLOORS
LOWEST AT MID PROM LEVEL
HIGHEST AT NOT GREATER THAN THE EXISTING BUILDING.

POSSIBLE REMOVAL OF STEPS AND LEVEL CHANGES.

POTENTIAL MAIN ACCESS.

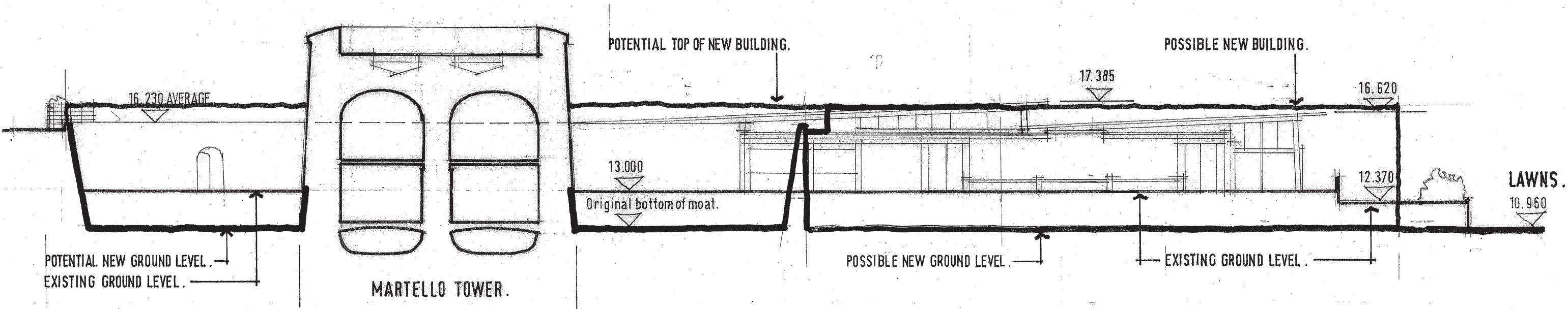
VIEW.

VIEW.

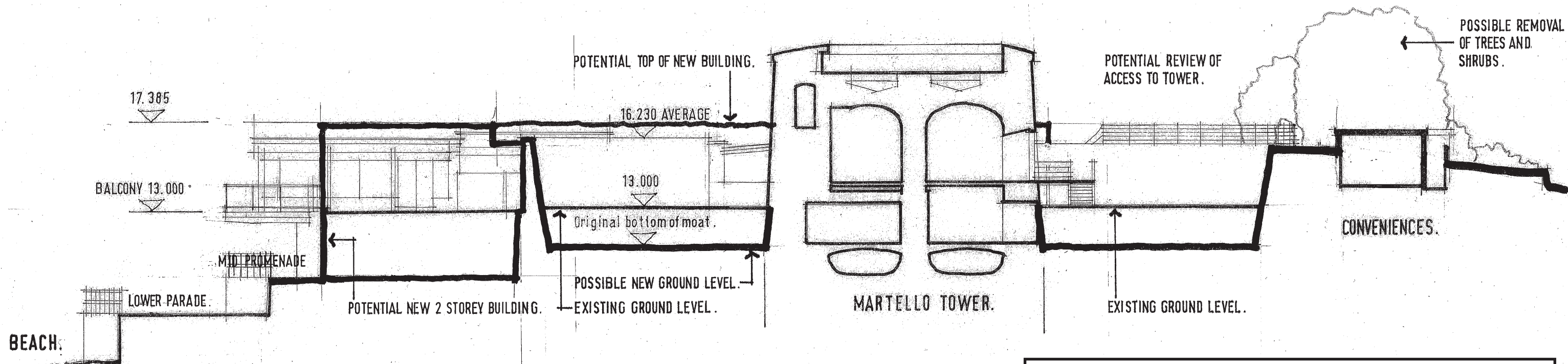
LAWNS.

DRAWING No: 5
WISH TOWER
DEVELOPMENT GUIDELINES - BLOCK PLAN 1: 400 AT A3

N.B. Subject to the advice contained within the Conservation Strategy and consultation with English Heritage



Section (looking south-east).



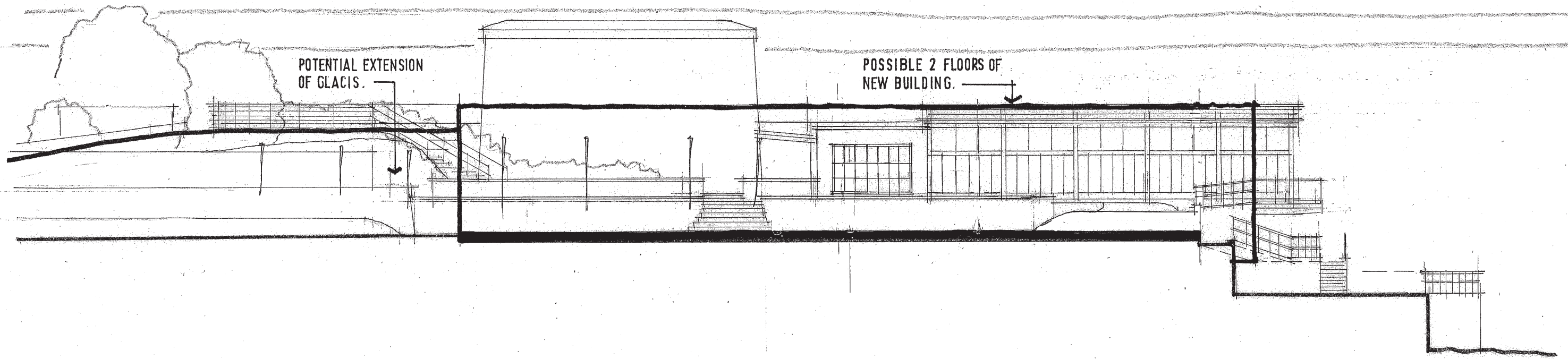
Section (looking south-west).

N.B. Subject to the advice contained within the Conservation Strategy and consultation with English Heritage

DRAWING No: 6
WISH TOWER
 DEVELOPMENT GUIDELINES - SECTIONS LOOKING SOUTH EAST AND SOUTH WEST 1: 200 AT A3

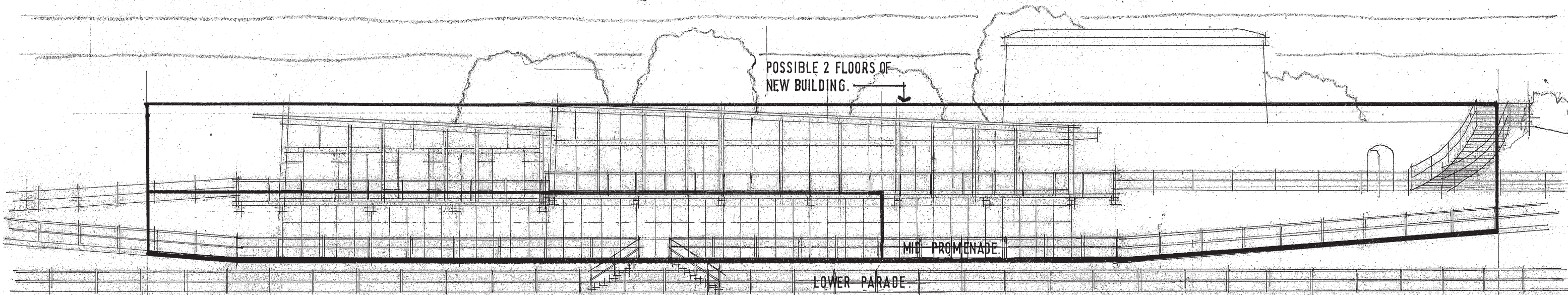
Elevation

(view from Western Lawns)



Elevation

(view from seafront)



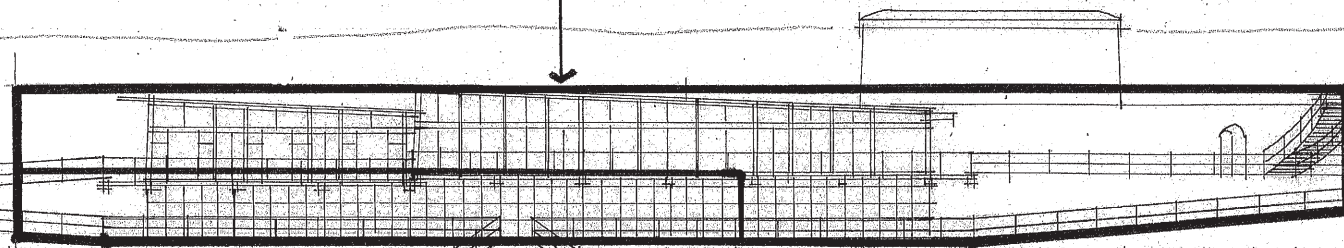
N.B. Subject to the advice contained within the Conservation Strategy and consultation with English Heritage

DRAWING No: 7
WISH TOWER

DEVELOPMENT GUIDELINES - ELEVATIONS VIEWED FROM WESTERN LAWNS AND SEAFRONT 1: 200 AT A3

Elevation (view from seafront)

POTENTIAL 2 FLOORS OF NEW BUILDING.



LOWER PARADE

MARTELLO TOWER AND SLOPES EXPOSED

POSSIBLE REMOVAL OF TREES AND SHRUBS
AND RESTORATION OF GLACIS.

GLACIS.

POTENTIAL NEW BUILDING.

GLACIS.

Elevation (view from King Edward's Parade)

N.B. Subject to the advice contained within the Conservation Strategy and consultation with English Heritage

DRAWING No: 8
WISH TOWER

DEVELOPMENT GUIDELINES - ELEVATIONS VIEWED FROM THE SEAFRONT AND KING EDWARDS PARADE 1: 400 AT A3