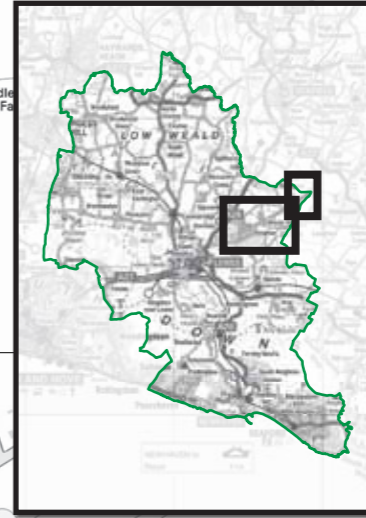
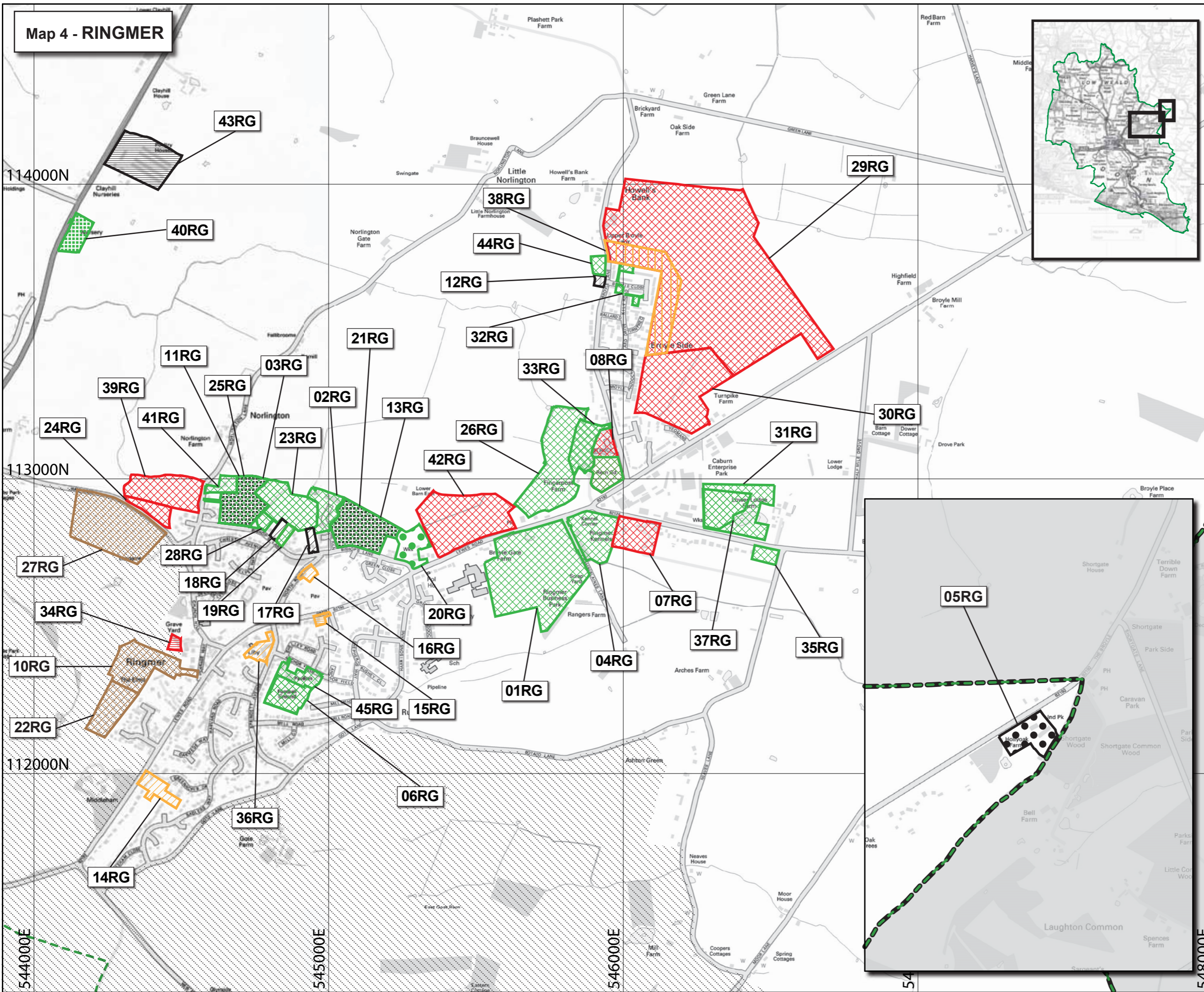


**Map 4 - RINGMER**



- Key**
- District Boundary
  - Parish Boundary
  - South Downs National Park
  - Other Local Authority

**SHLAA Site Assessment (& Reason)**

- Suitable, Available & Achievable
- Under Construction
- Extant Planning Permission
- Resolution to Grant
- Developable - Suitable and Available but Achievability to Overcome Risks
- Developable - Suitable but Unknown Availability
- Developable - Suitable but only Available in future
- Developable - Unknown Suitability
- Not Deliverable or Developable - Not Achievable
- Not Deliverable or Developable - Not Available
- Not Deliverable or Developable - Not Suitable
- Filtered - Fails Proximity Assessment
- Filtered - Site Below Dwelling Threshold
- Filtered - Unavailable
- Filtered - Unknown Location or Details
- Superseded
- Completed
- Site within SDNP - See SDNP SHLAA



**Lewes District Council**

Scale: 1:12000 @ A3  
Date: August 2018

