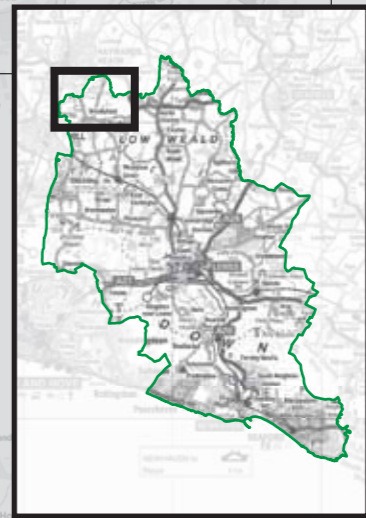
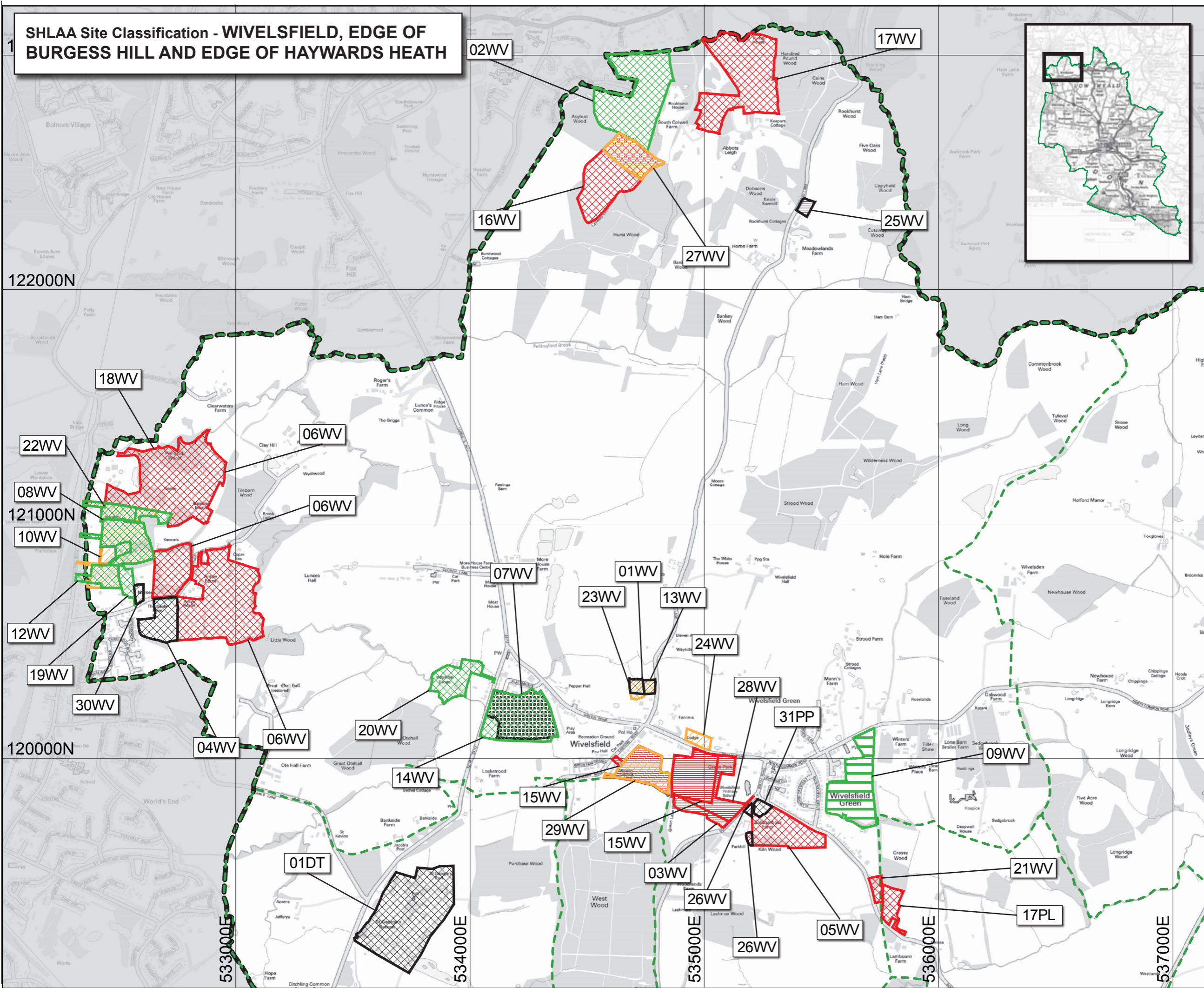


SHLAA Site Classification - WIVELSFIELD, EDGE OF BURGESS HILL AND EDGE OF HAYWARDS HEATH



Key

- District Boundary
- Parish Boundary
- South Downs National Park
- Other Local Authority

SHLAA Site Assessment (& Reason)

- Suitable, Available & Achievable
- Under Construction
- Extant Planning Permission
- Resolution to Grant
- Developable - Suitable and Available but Achievability to Overcome Risks
- Developable - Suitable but Unknown Availability
- Developable - Suitable but only Available in future
- Developable - Unknown Suitability
- Not Deliverable or Developable - Not Achievable
- Not Deliverable or Developable - Not Available
- Not Deliverable or Developable - Not Suitable
- Filtered - Fails Proximity Assessment
- Filtered - Site Below Dwelling Threshold
- Filtered - Unavailable
- Filtered - Unknown Location or Details
- Superseded
- Completed
- Site within SDNP - See SDNP SHLAA

Lewes District Council

Scale: 1:15000 @ A3
Date: July 2017

Scale
0 150 300 450 600 m

© Crown Copyright and database rights 2017
Ordnance Survey 100019275