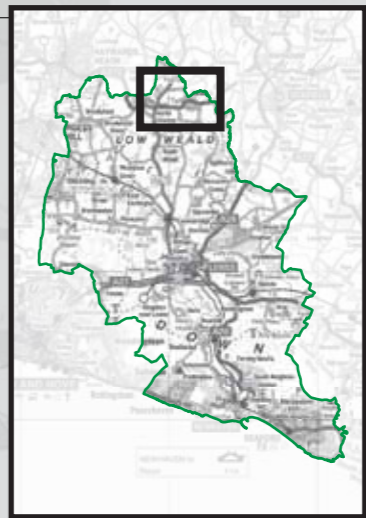
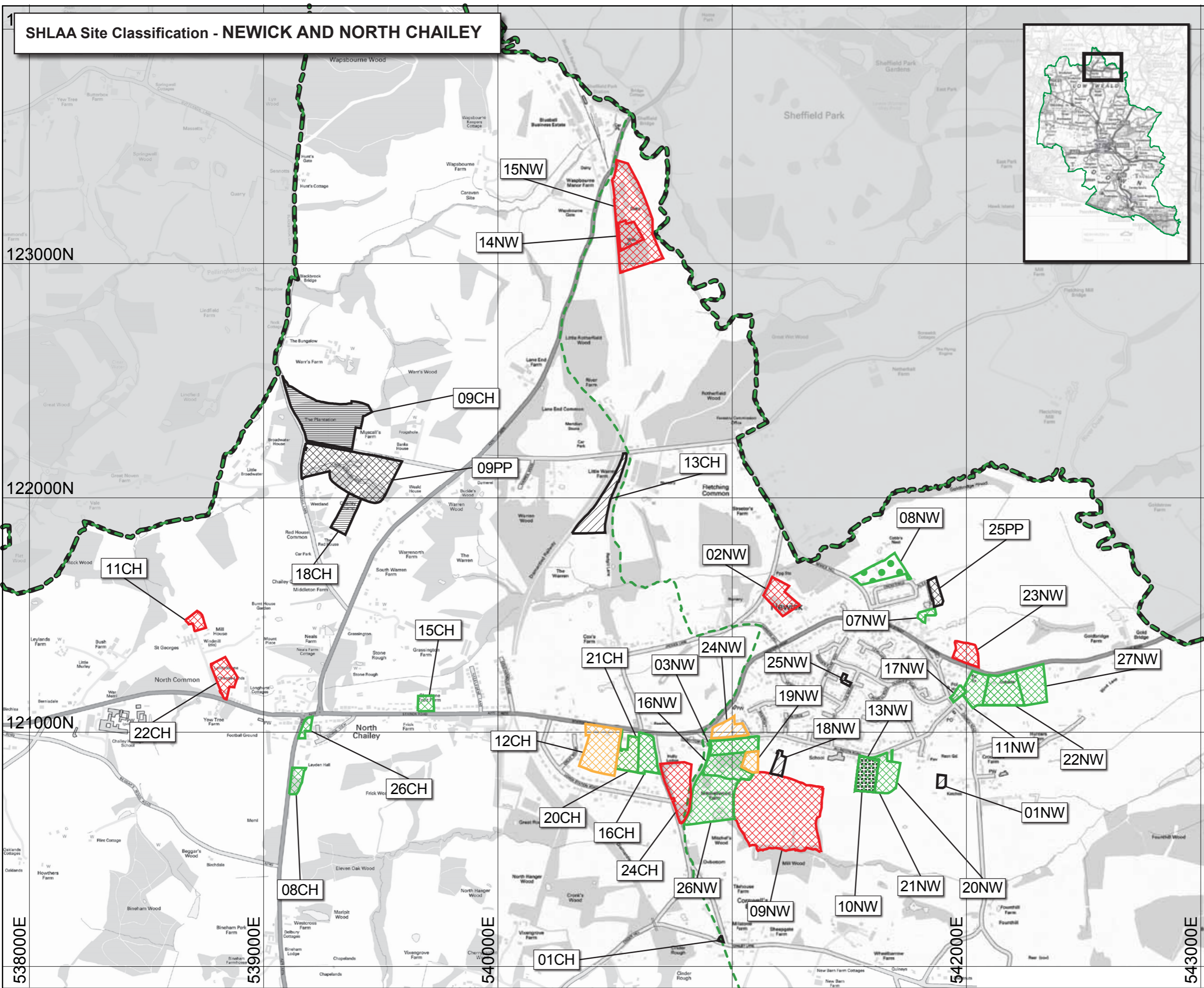


SHLAA Site Classification - NEWICK AND NORTH CHAILEY

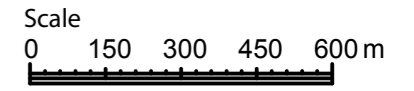


- Key**
- District Boundary
 - Parish Boundary
 - South Downs National Park
 - Other Local Authority
- SHLAA Site Assessment (& Reason)**
- Suitable, Available & Achievable
 - Under Construction
 - Extant Planning Permission
 - Resolution to Grant
 - Developable - Suitable and Available but Achievability to Overcome Risks
 - Developable - Suitable but Unknown Availability
 - Developable - Suitable but only Available in future
 - Developable - Unknown Suitability
 - Not Deliverable or Developable - Not Achievable
 - Not Deliverable or Developable - Not Available
 - Not Deliverable or Developable - Not Suitable
 - Filtered - Fails Proximity Assessment
 - Filtered - Site Below Dwelling Threshold
 - Filtered - Unavailable
 - Filtered - Unknown Location or Details
 - Superseded
 - Completed
 - Site within SDNP - See SDNP SHLAA



Lewes District Council

Scale: 1:15000 @ A3
Date: July 2017



© Crown Copyright and database rights 2017
Ordnance Survey 100019275