

KEY

-  Lewes District Council
-  Parish Boundary
- Open Space**
-  Allotments, Community Gardens and City Farms
-  Amenity Greenspace
-  Cemeteries and Religious Grounds
-  Civic Spaces and Market Squares
-  Green Corridor / Cycleways
-  Institutional Grounds
-  Natural and Semi Natural Greenspace
-  Outdoor Sports Facilities
-  Parks and Gardens
-  Provision for Children and Young People



Contains OS data © Crown Copyright and database right 2020.
All rights reserved.
© Crown copyright Lewes District Council Ordnance Survey LA 100018275 2020



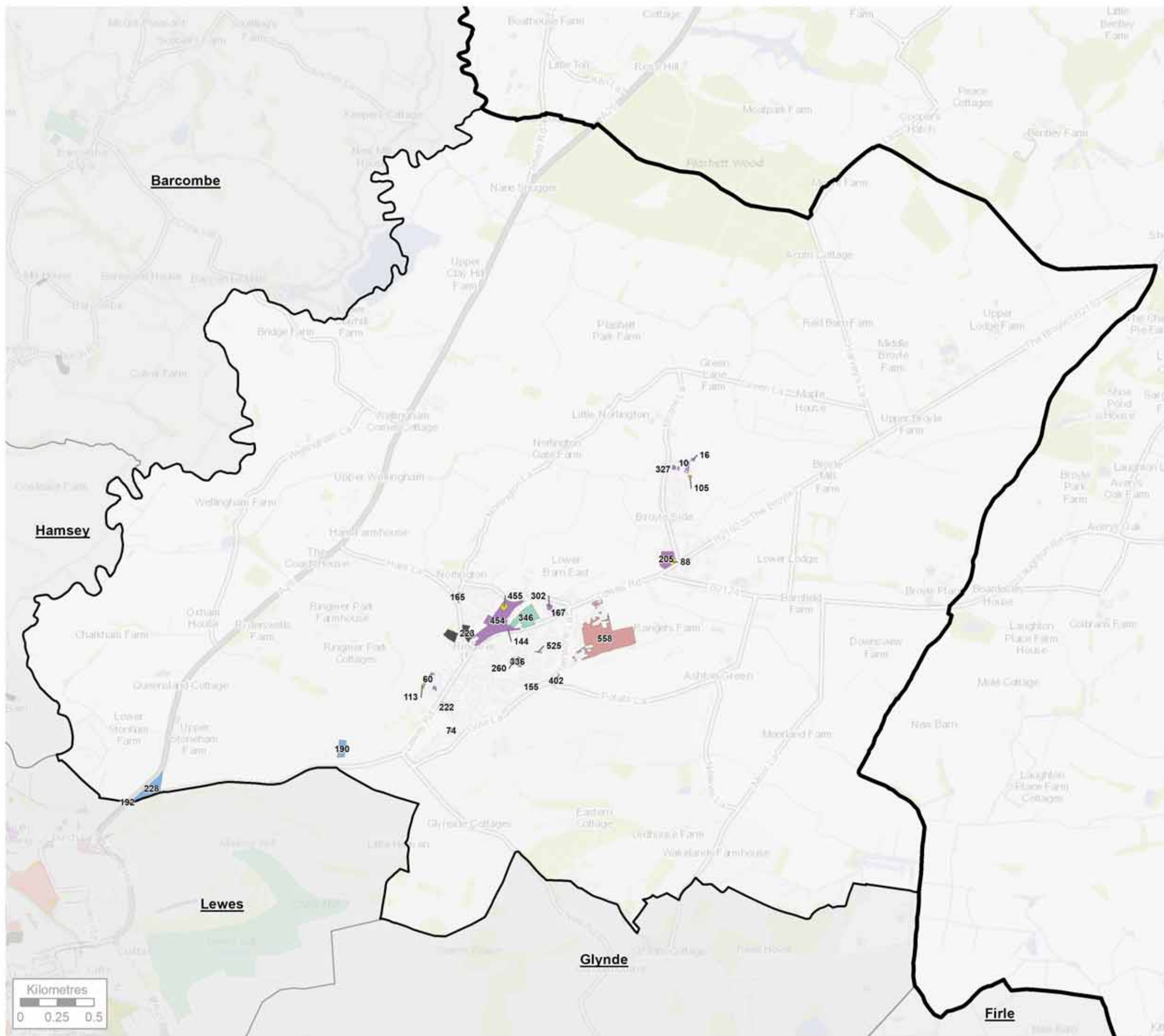
Project
Lewes District Council Open Space Strategy

Title
Open Space Typology

Drawing Number
G7449.001

Drawn	Checked	Approved	Scale	Date
HF	JO		1:100,000 @ A3	28/04/2020





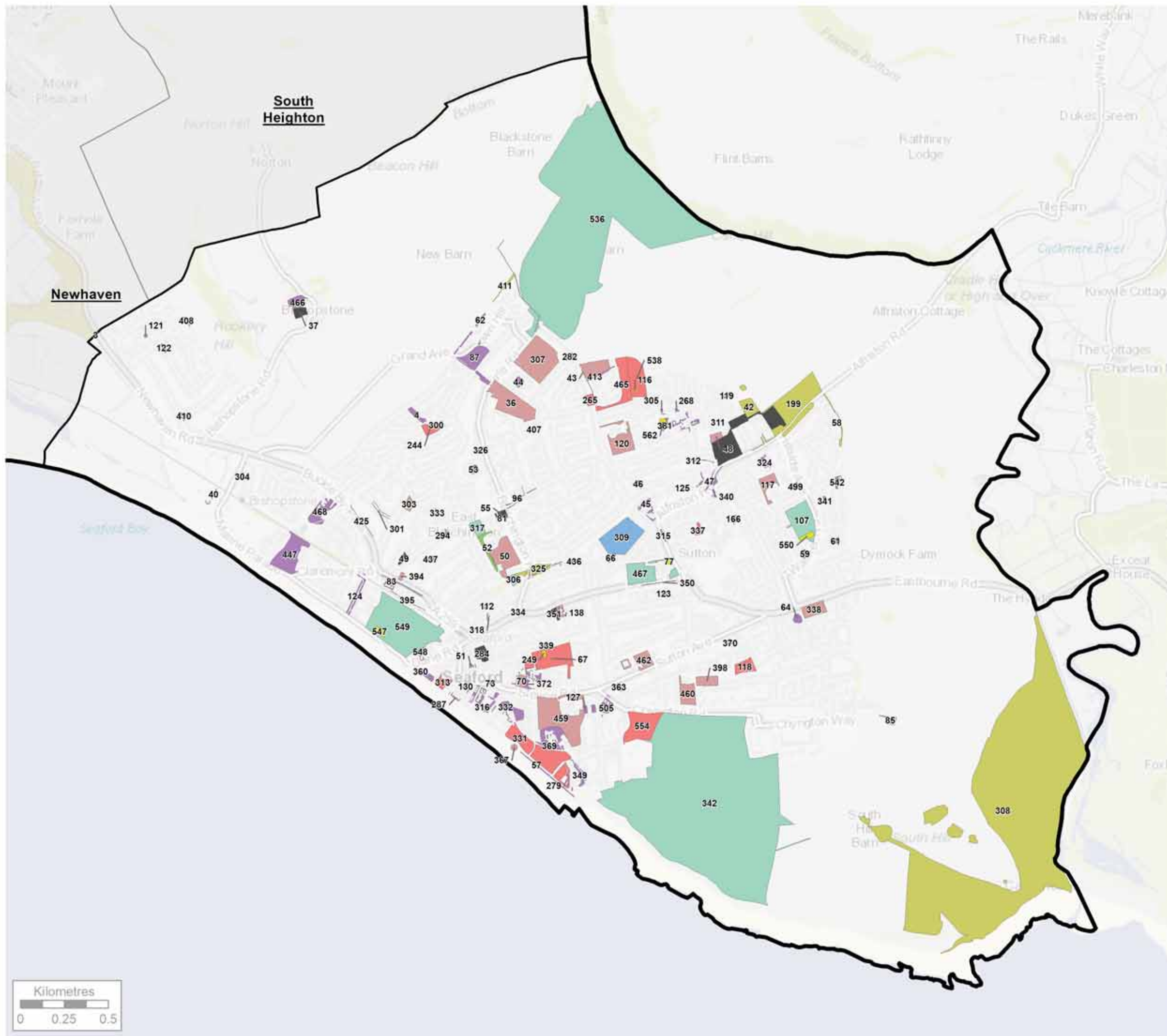
- KEY**
- Lewes District Council
 - Parish Boundary
- Open Space**
- Allotments, Community Gardens and City Farms
 - Amenity Greenspace
 - Cemeteries and Religious Grounds
 - Institutional Grounds
 - Outdoor Sports Facilities
 - Provision for Children and Young People

Contains OS data © Crown Copyright and database right 2020.
 All rights reserved.
 © Crown copyright Lewes District Council Ordnance Survey LA 100018275 2020



Project Lewes District Council Open Space Strategy				
Title Open Space Typology - Ringmer				
Drawing Number G7449.001.9				
Drawn HF	Checked JO	Approved	Scale 1:25,000 @ A3	Date 28/04/2020





KEY

Lewes District Council

Parish Boundary

Open Space

Allotments, Community Gardens and City Farms

Amenity Greenspace

Cemeteries and Religious Grounds

Green Corridor / Cycleways

Institutional Grounds

Natural and Semi Natural Greenspace

Outdoor Sports Facilities

Parks and Gardens

Provision for Children and Young People



Contains OS data © Crown Copyright and database right 2020.
All rights reserved.
© Crown copyright Lewes District Council Ordnance Survey LA
100018275 2020

Site Map



THE ENVIRONMENT PARTNERSHIP



Project
Lewes District Council Open Space Strategy

Title
Open Space Typology - Seaford

Drawing Number
G7449.001.10

Drawn	Checked	Approved	Scale	Date
HF	JO		1:21,000 @ A3	28/04/2020





- KEY**
- Lewes District Council
 - Parish Boundary
- Open Space**
- Amenity Greenspace
 - Cemeteries and Religious Grounds
 - Institutional Grounds
 - Natural and Semi Natural Greenspace
 - Outdoor Sports Facilities
 - Parks and Gardens
 - Provision for Children and Young People

Contains OS data © Crown Copyright and database right 2020.
 All rights reserved.
 © Crown copyright Lewes District Council Ordnance Survey LA 100018275 2020

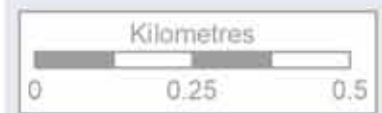


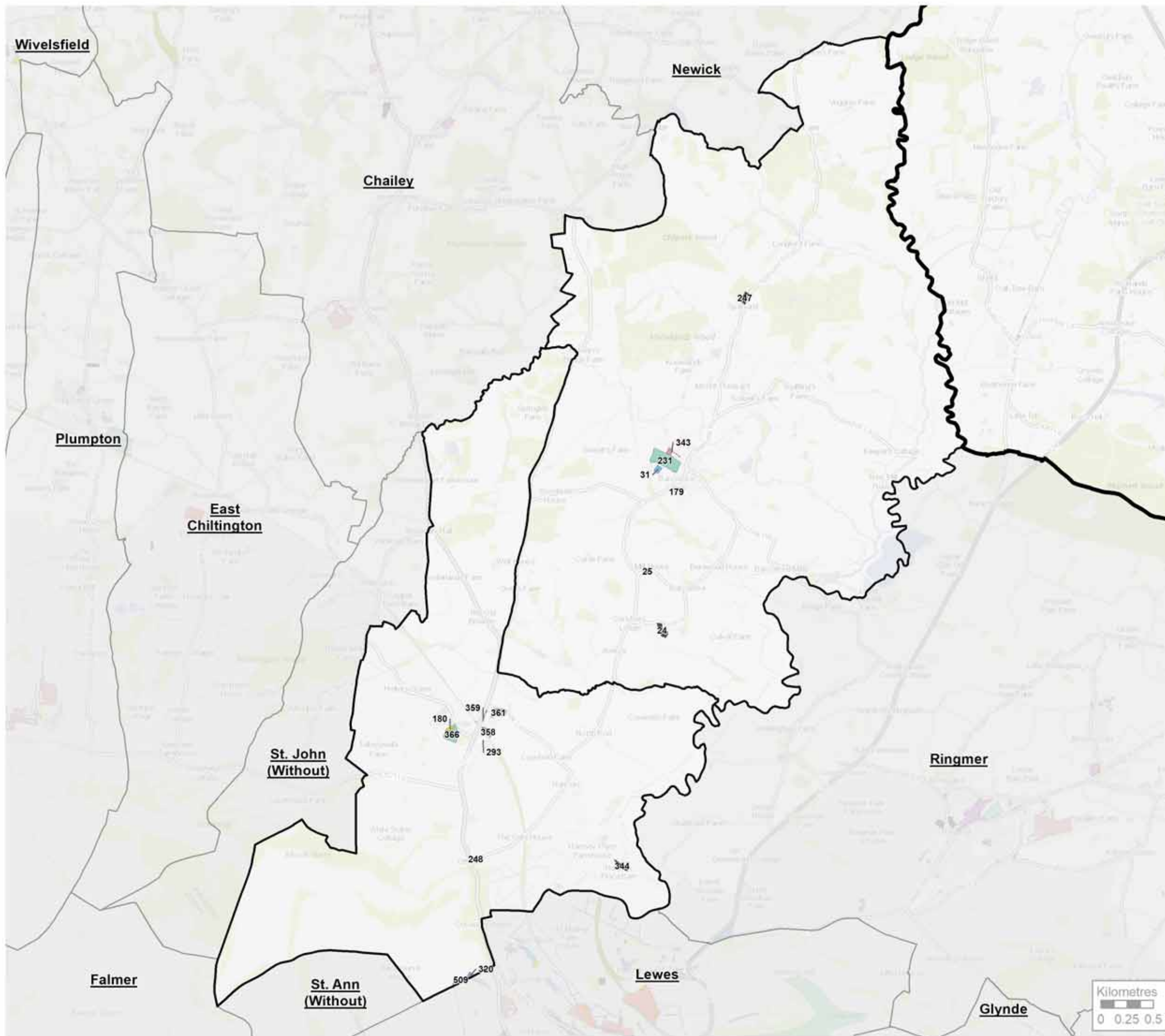
Project
 Lewes District Council Open Space Strategy

Title
 Open Space Typology - Telscombe

Drawing Number
 G7449.001.11

Drawn	Checked	Approved	Scale	Date
HF	JO		1:12,000 @ A3	28/04/2020





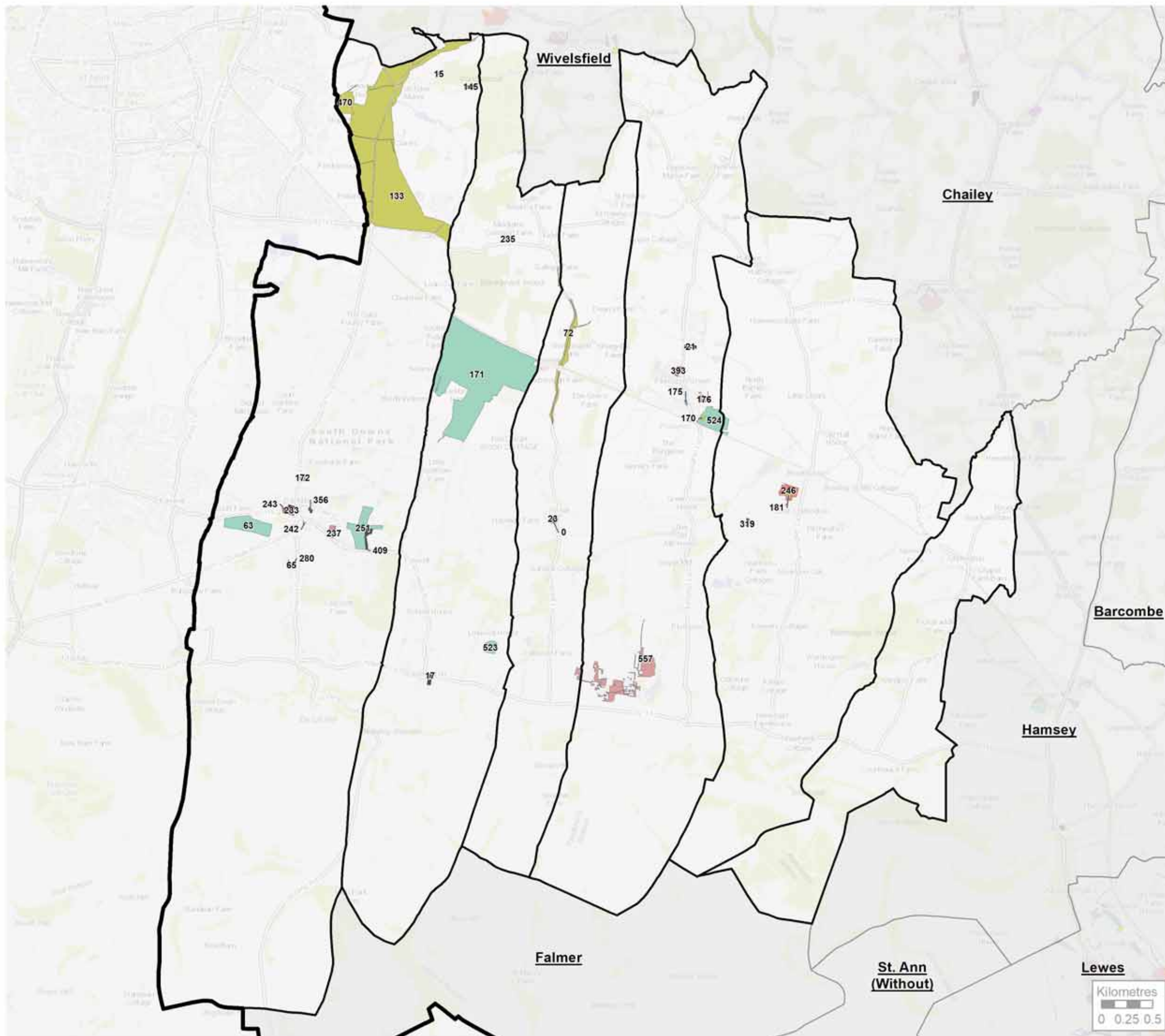
- KEY**
- Lewes District Council
 - Parish Boundary
- Open Space**
- Allotments, Community Gardens and City Farms
 - Cemeteries and Religious Grounds
 - Green Corridor / Cycleways
 - Institutional Grounds
 - Outdoor Sports Facilities
 - Provision for Children and Young People

N

Contains OS data © Crown Copyright and database right 2020.
 All rights reserved.
 © Crown copyright Lewes District Council Ordnance Survey LA 100018275 2020



Project Lewes District Council Open Space Strategy				
Title Open Space Typology - Barcombe and Hamsey				
Drawing Number G7449.001.1				
Drawn HF	Checked JO	Approved	Scale 1:35,000 @ A3	Date 28/04/2020



- KEY**
- Lewes District Council
 - Parish Boundary
- Open Space**
- Allotments, Community Gardens and City Farms
 - Amenity Greenspace
 - Cemeteries and Religious Grounds
 - Institutional Grounds
 - Natural and Semi Natural Greenspace
 - Outdoor Sports Facilities
 - Parks and Gardens
 - Provision for Children and Young People

Contains OS data © Crown Copyright and database right 2020.
 All rights reserved.
 © Crown copyright Lewes District Council Ordnance Survey LA 100018275 2020



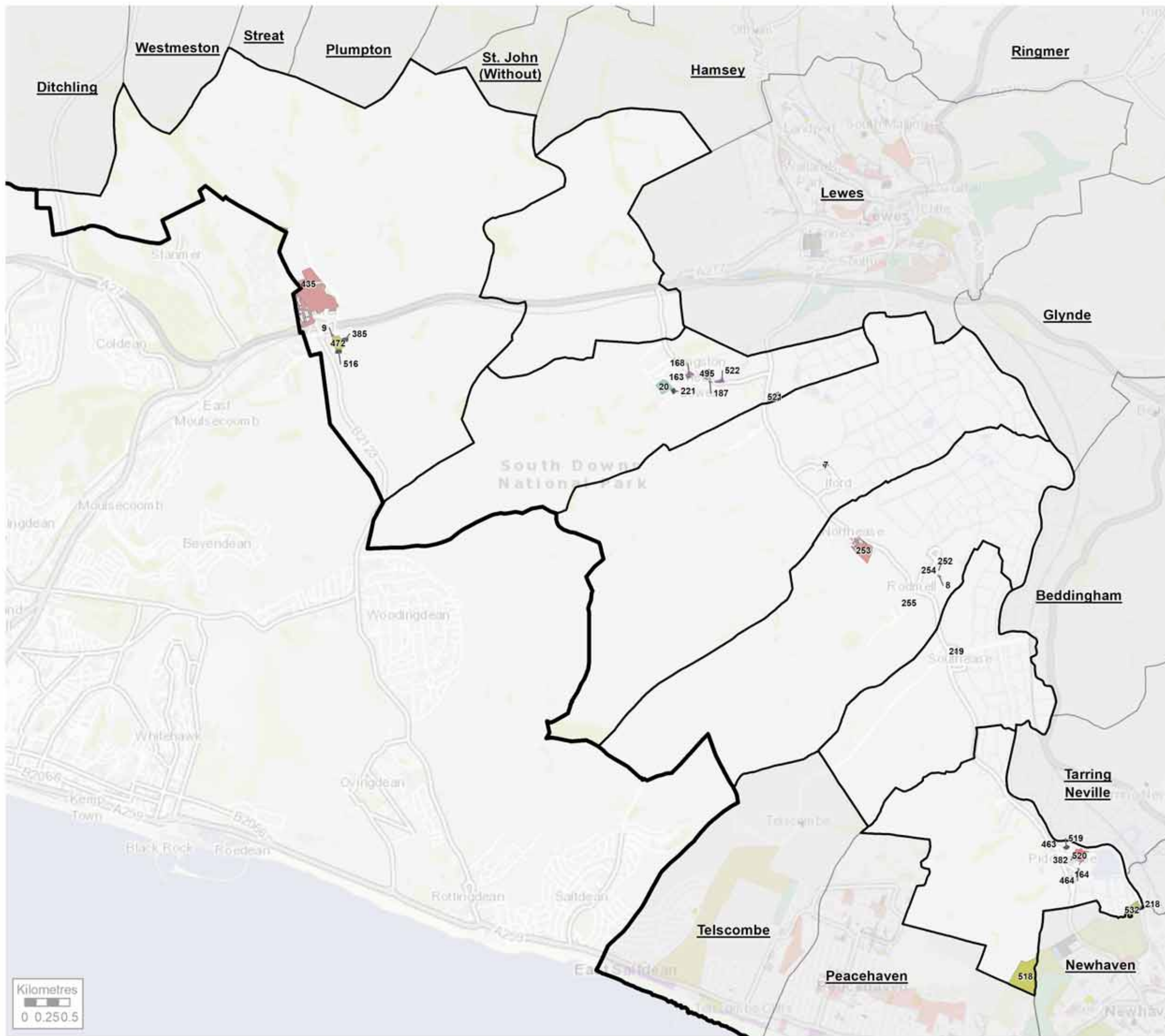
Project
Lewes District Council Open Space Strategy

Title
Open Space Typology - Ditchling, Westmeston, Plumpton, Streat, East Chilmington and St. John (Without)

Drawing Number
G7449.001.2

Drawn	Checked	Approved	Scale	Date
HF	JO		1:36,000 @ A3	28/04/2020





- KEY**
- Lewes District Council
 - Parish Boundary
- Open Space**
- Allotments, Community Gardens and City Farms
 - Amenity Greenspace
 - Cemeteries and Religious Grounds
 - Green Corridor / Cycleways
 - Institutional Grounds
 - Natural and Semi Natural Greenspace
 - Outdoor Sports Facilities
 - Parks and Gardens
 - Provision for Children and Young People

Contains OS data © Crown Copyright and database right 2020.
 All rights reserved.
 © Crown copyright Lewes District Council Ordnance Survey LA
 100018275 2020

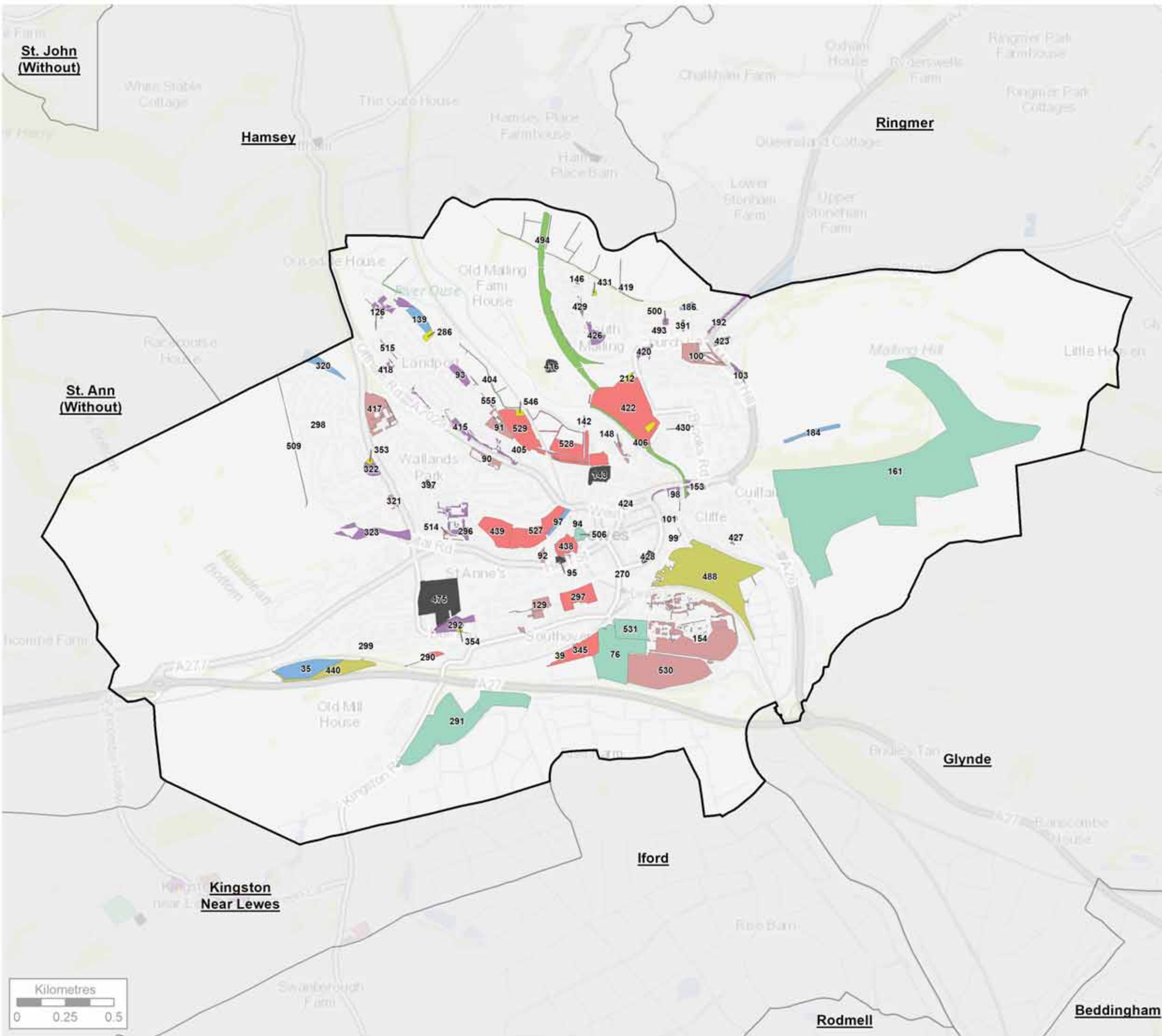


Project
Lewes District Council Open Space Strategy

Title
Open Space Typology - Kingston

Drawing Number
G7449.001.3

Drawn	Checked	Approved	Scale	Date
HF	JO		1:41,000 @ A3	28/04/2020



KEY

-  Lewes District Council
-  Parish Boundary
- Open Space**
-  Allotments, Community Gardens and City Farms
-  Amenity Greenspace
-  Cemeteries and Religious Grounds
-  Civic Spaces and Market Squares
-  Green Corridor / Cycleways
-  Institutional Grounds
-  Natural and Semi Natural Greenspace
-  Outdoor Sports Facilities
-  Parks and Gardens
-  Provision for Children and Young People



Contains OS data © Crown Copyright and database right 2020.
All rights reserved.
© Crown copyright Lewes District Council Ordnance Survey LA 100018275 2020

Site Map



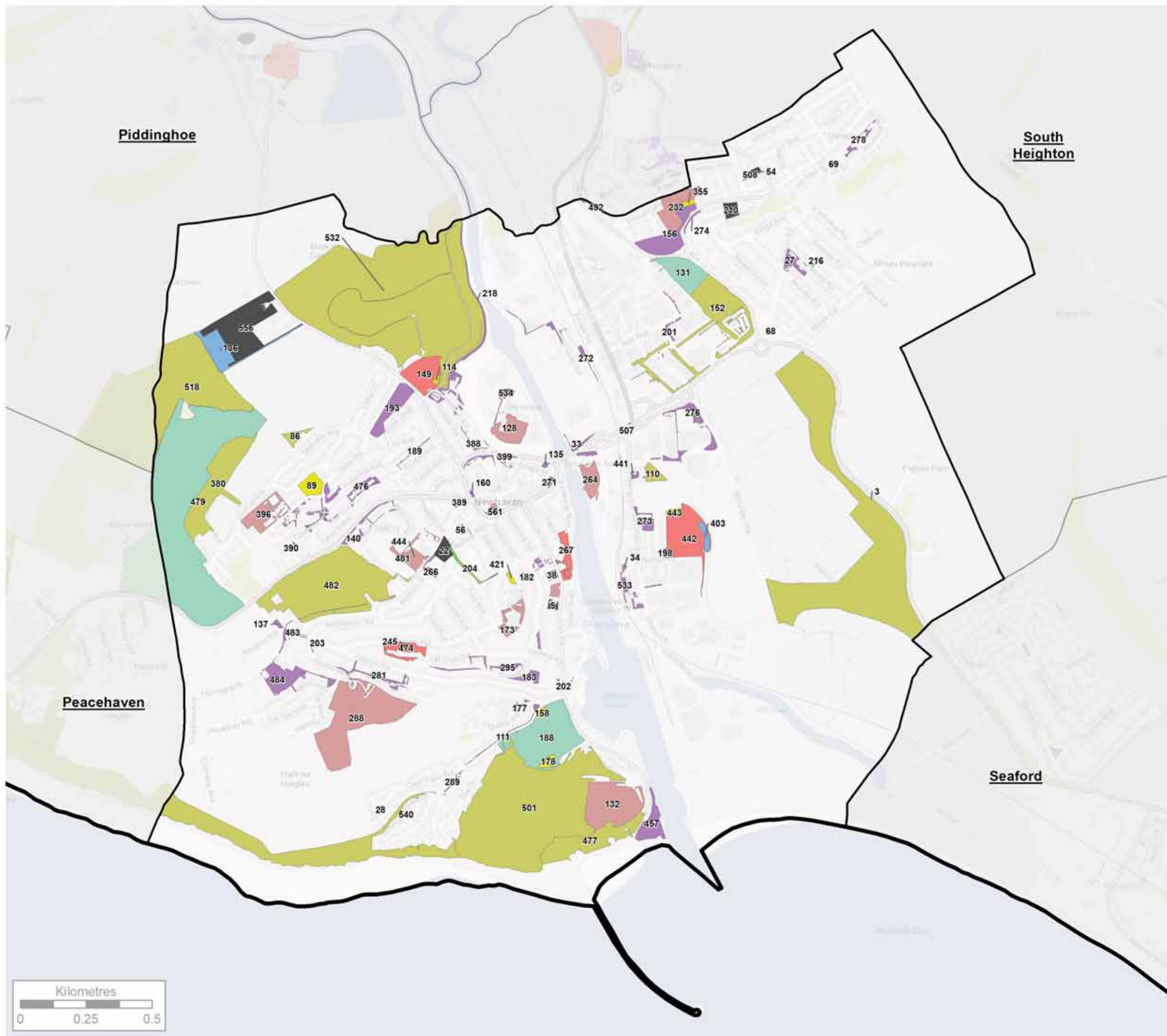
Project
Lewes District Council Open Space Strategy

Title
Open Space Typology - Lewes

Drawing Number
G7449.001.4

Drawn	Checked	Approved	Scale	Date
HF	JO		1:19,000 @ A3	28/04/2020





KEY

Lewes District Council

Parish Boundary

Open Space

- Allotments, Community Gardens and City Farms
- Amenity Greenspace
- Cemeteries and Religious Grounds
- Green Corridor / Cycleways
- Institutional Grounds
- Natural and Semi Natural Greenspace
- Outdoor Sports Facilities
- Parks and Gardens
- Provision for Children and Young People



Contains OS data © Crown Copyright and database right 2020.
All rights reserved.
© Crown copyright Lewes District Council Ordnance Survey LA 100018275 2020

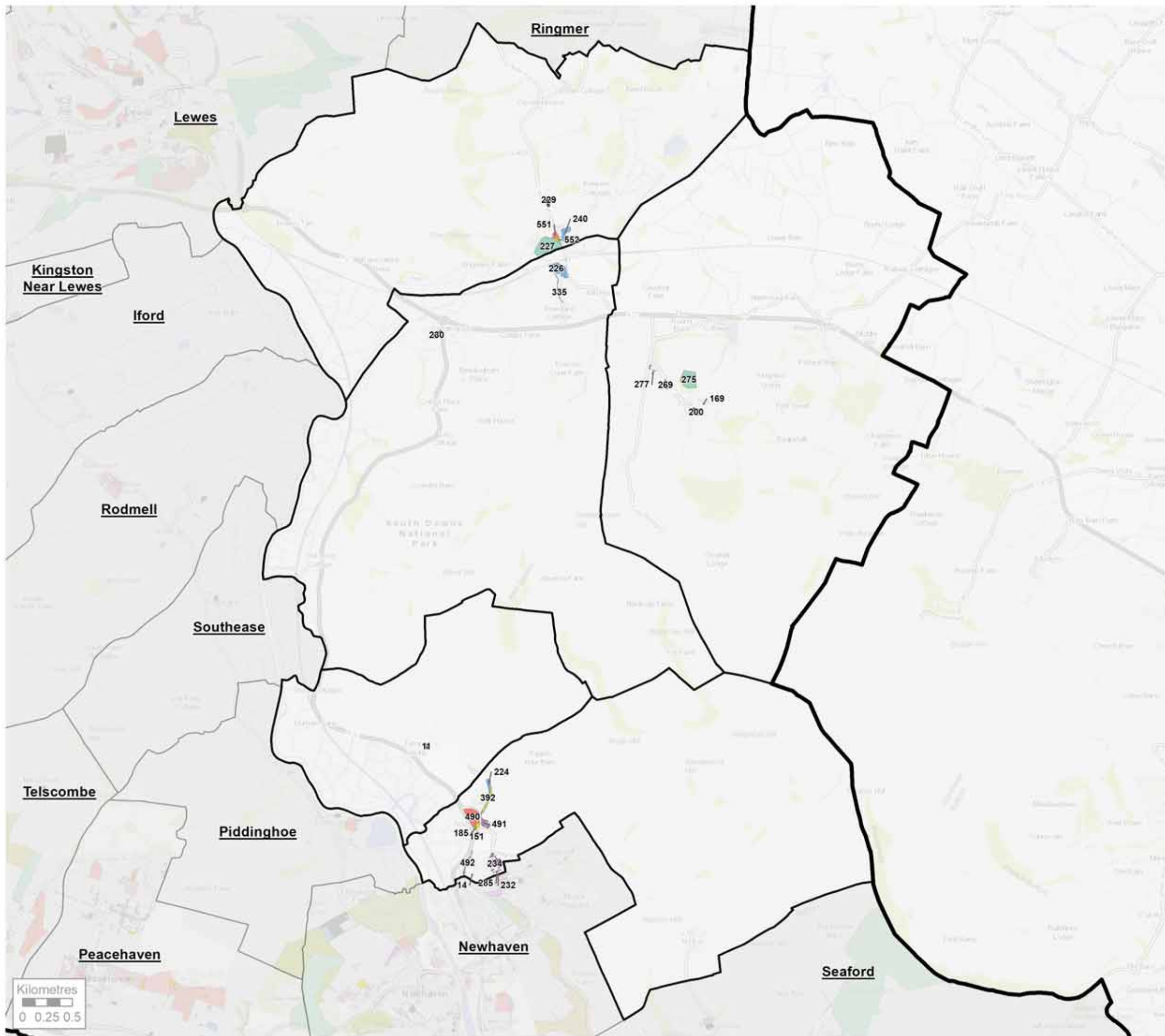


Project
Lewes District Council Open Space Strategy

Title
Open Space Typology - Newhaven

Drawing Number
G7449.001.5

Drawn	Checked	Approved	Scale	Date
HF	JO		1:14,000 @ A3	28/04/2020



- KEY**
- Lewes District Council
 - Parish Boundary
- Open Space**
- Allotments, Community Gardens and City Farms
 - Amenity Greenspace
 - Cemeteries and Religious Grounds
 - Green Corridor / Cycleways
 - Institutional Grounds
 - Natural and Semi Natural Greenspace
 - Outdoor Sports Facilities
 - Parks and Gardens
 - Provision for Children and Young People

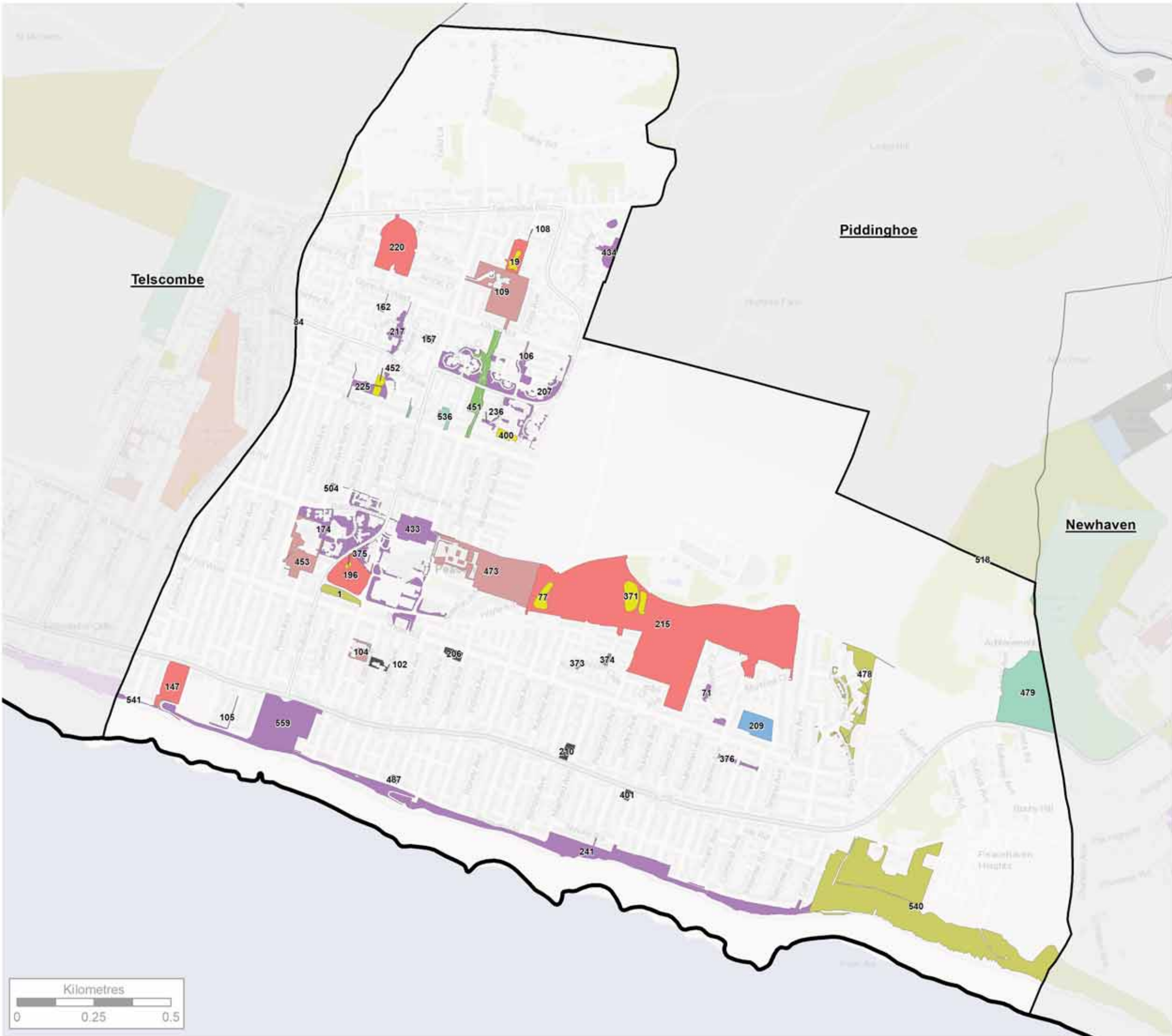
N

Contains OS data © Crown Copyright and database right 2020.
 All rights reserved
 © Crown copyright Lewes District Council Ordnance Survey LA
 100018275 2020



Project Lewes District Council Open Space Strategy				
Title Open Space Typology - Ouse Valley				
Drawing Number G7449.001.7				
Drawn HF	Checked JO	Approved	Scale 1:37,000 @ A3	Date 28/04/2020





- KEY**
- Lewes District Council
 - Parish Boundary
- Open Space**
- Allotments, Community Gardens and City Farms
 - Amenity Greenspace
 - Cemeteries and Religious Grounds
 - Green Corridor / Cycleways
 - Institutional Grounds
 - Natural and Semi Natural Greenspace
 - Outdoor Sports Facilities
 - Parks and Gardens
 - Provision for Children and Young People

N

Contains OS data © Crown Copyright and database right 2020.
 All rights reserved
 © Crown copyright Lewes District Council Ordnance Survey LA 100018275 2020



Project				
Lewes District Council Open Space Strategy				
Title				
Open Space Typology - Peacehaven				
Drawing Number				
G7449.001.8				
Drawn	Checked	Approved	Scale	Date
HF	JO		1:12,000 @ A3	28/04/2020

