

FIGURE 2.1 - SEARCH AREA

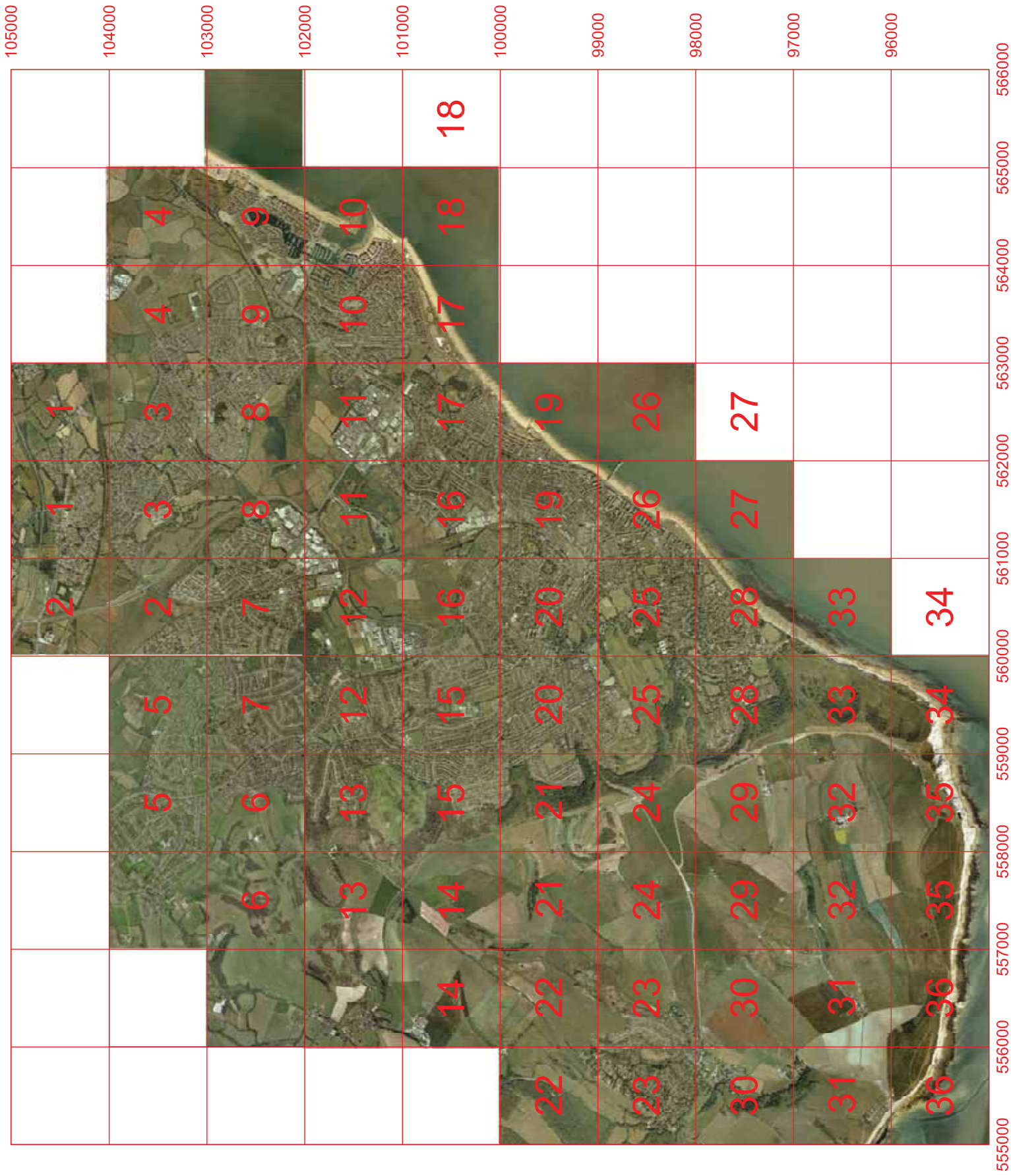


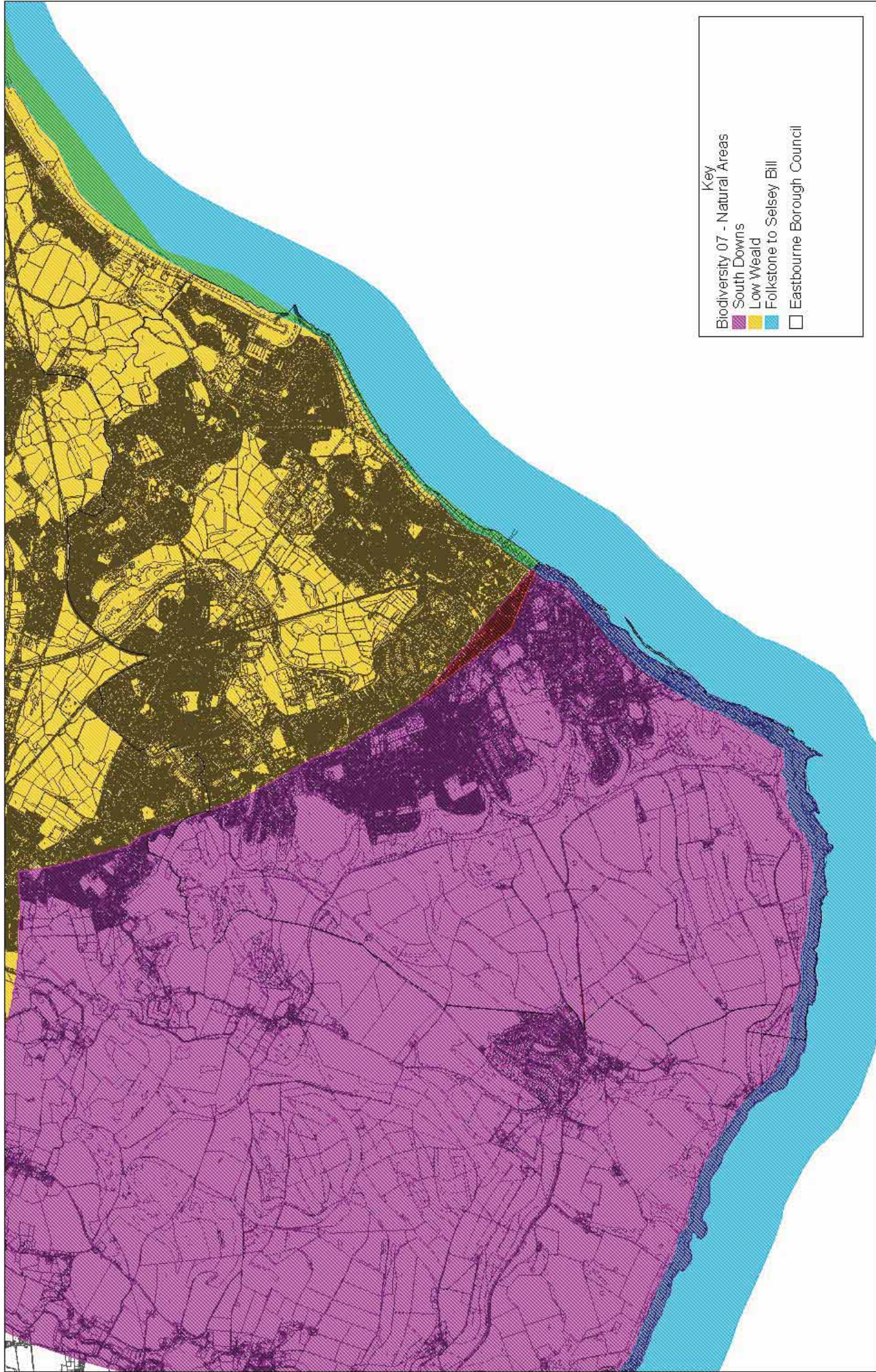
LEGEND

21	21
----	----

SHEET NUMBERS USED FOR HABITAT PLAN

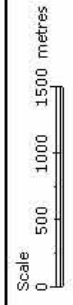
FIGURE 2.2 SHEET NUMBERS





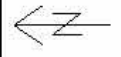
- Key**
- Biodiversity 07 - Natural Areas
 - South Downs
 - Low Weald
 - Folkstone to Selsey Bill
 - Eastbourne Borough Council

Figure 3.1 - Natural Areas
Eastbourne Biodiversity Assessment 2007
Ash Partnership / DAYCAD



Scale: 1:40000
X: 560155 Y: 99619

11 June 2008

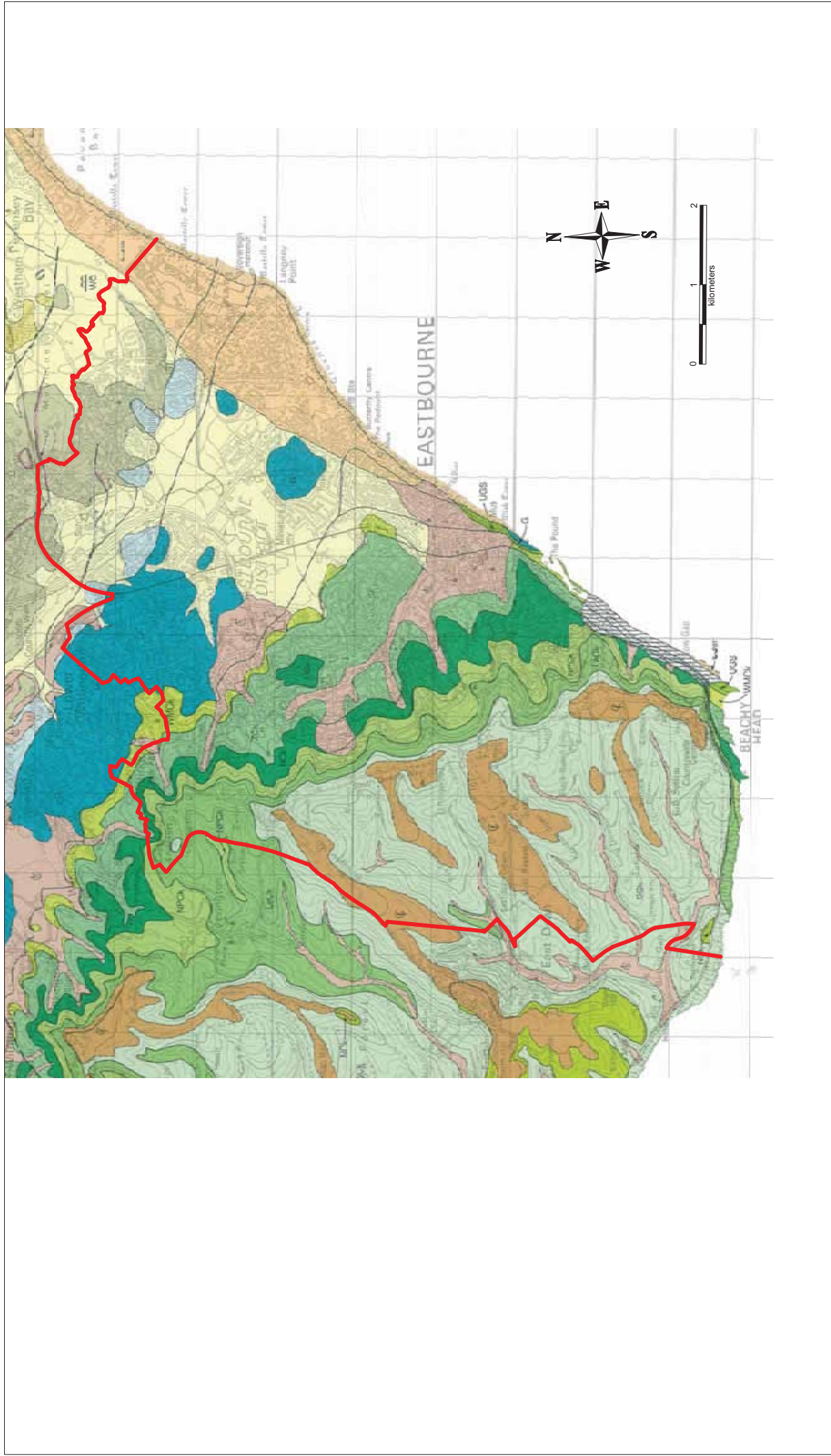


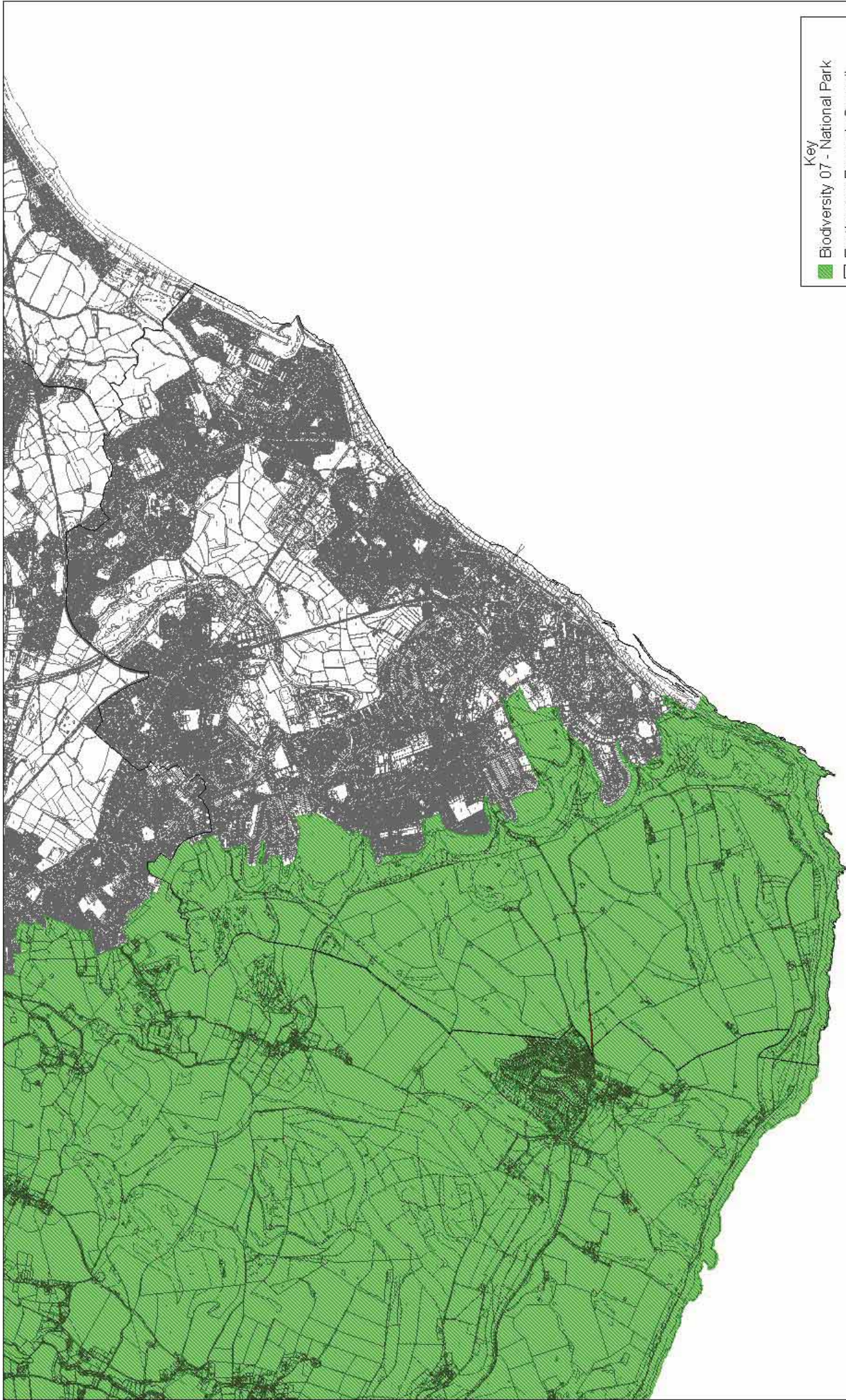
This map is based upon Ordnance Survey material with the permission of Ordnance Survey on behalf of the Controller of Her Majesty's Stationery Office (C) Crown copyright. Unauthorised reproduction infringes Crown copyright and may lead to prosecution or civil proceedings.
Eastbourne Borough Council
LA1000245 09 2008



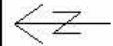
Eastbourne Borough
Boundary

FIGURE 5.1 - GEOLOGY



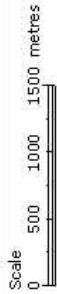


Key
 ■ Biodiversity 07 - National Park
 □ Eastbourne Borough Council

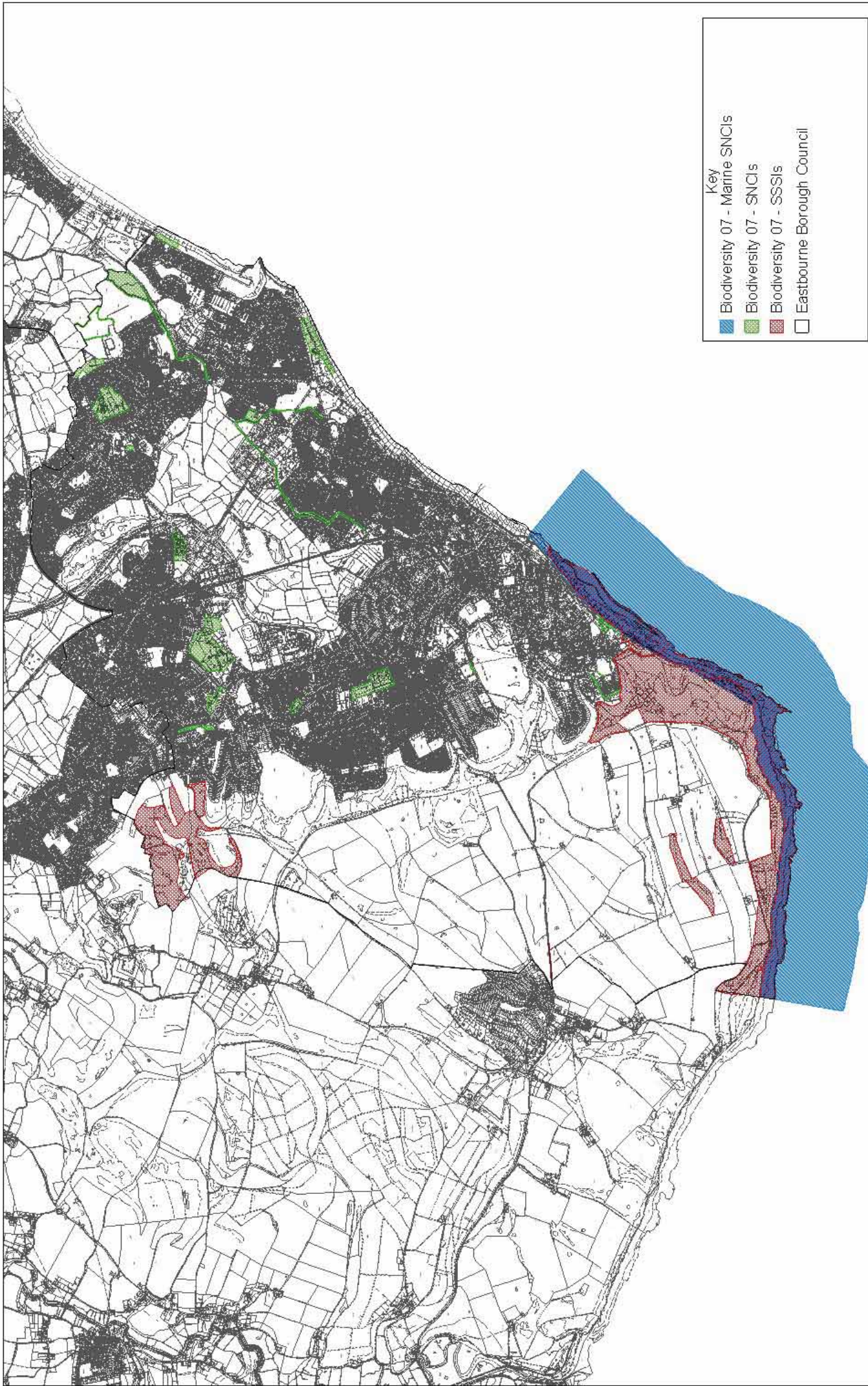


09 June 2008

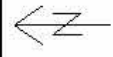
Eastbourne Biodiversity Assessment 2007
 Ash Partnership / DAVCAD
 Scale: 1:40000
 X: 560203 Y: 99606



This map is based upon Ordnance Survey material with the permission of Ordnance Survey on behalf of the Controller of Her Majesty's Stationery Office (C) Crown copyright, unauthorised reproduction infringes Crown copyright and may lead to prosecution or civil proceedings.
 Eastbourne Borough Council
 LA10002 5879 2008



- Key
- Biodiversity 07 - Marine SNICs
 - Biodiversity 07 - SNICs
 - Biodiversity 07 - SSSIs
 - Eastbourne Borough Council



11 June 2008

Figure 6.2 - Statutory and Non-statutory designated sites

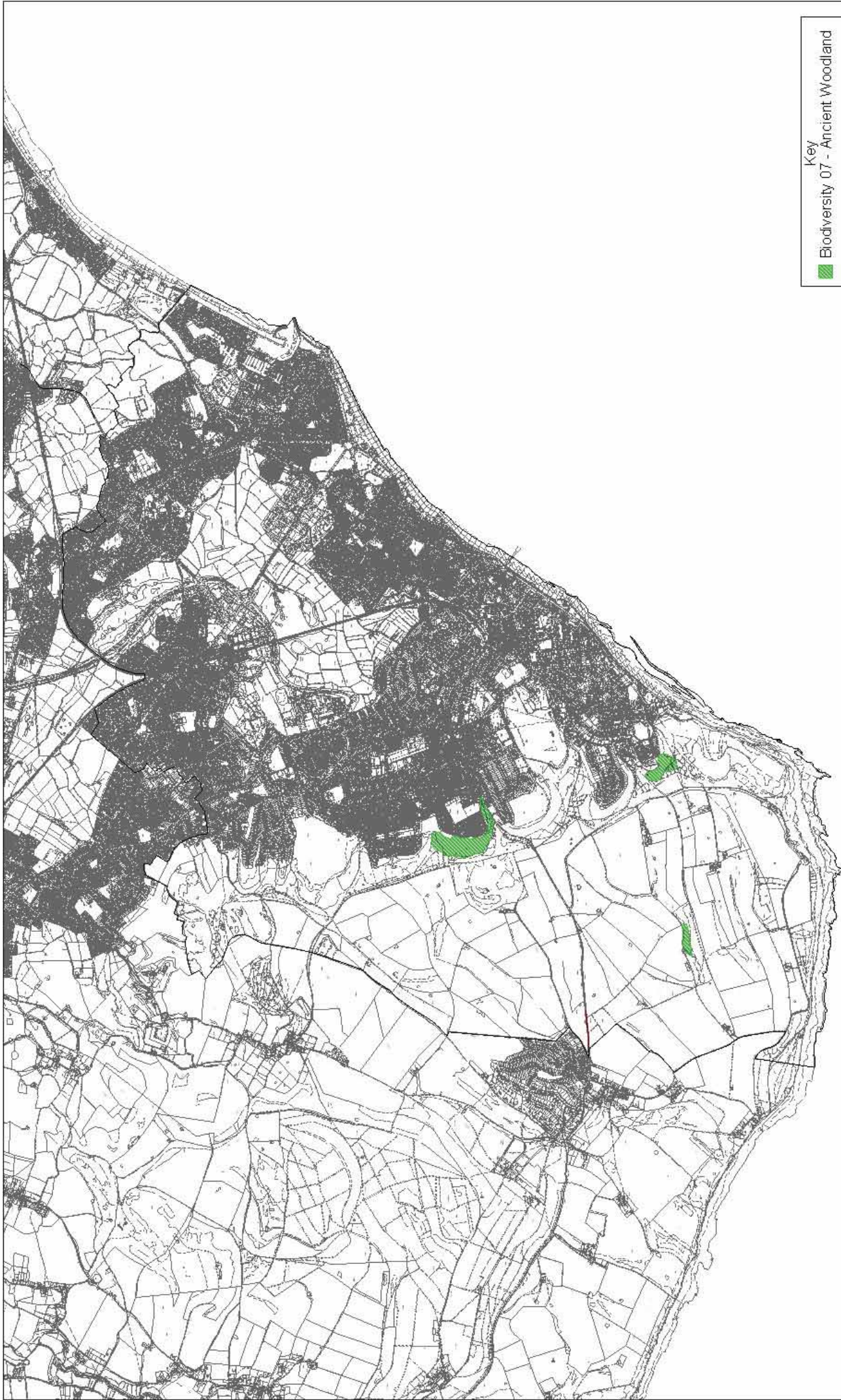
Eastbourne Biodiversity Assessment 2007

Ash Partnership / DAYCAD

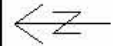
Scale
0 500 1000 1500 metres

Scale: 1:40000
X: 559553 Y: 99206

This map is based upon Ordnance Survey material with the permission of Ordnance Survey on behalf of the Controller of Her Majesty's Stationery Office (C) Crown copyright. Unauthorised reproduction infringes Crown copyright and may lead to prosecution or civil proceedings.
Eastbourne Borough Council
LA10002516.P9 2008



Key
 Biodiversity 07 - Ancient Woodland
 Eastbourne Borough Council



09 June 2008

Scale: 1:40000
 X: 560225 Y: 99563

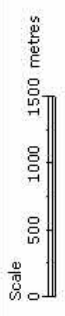
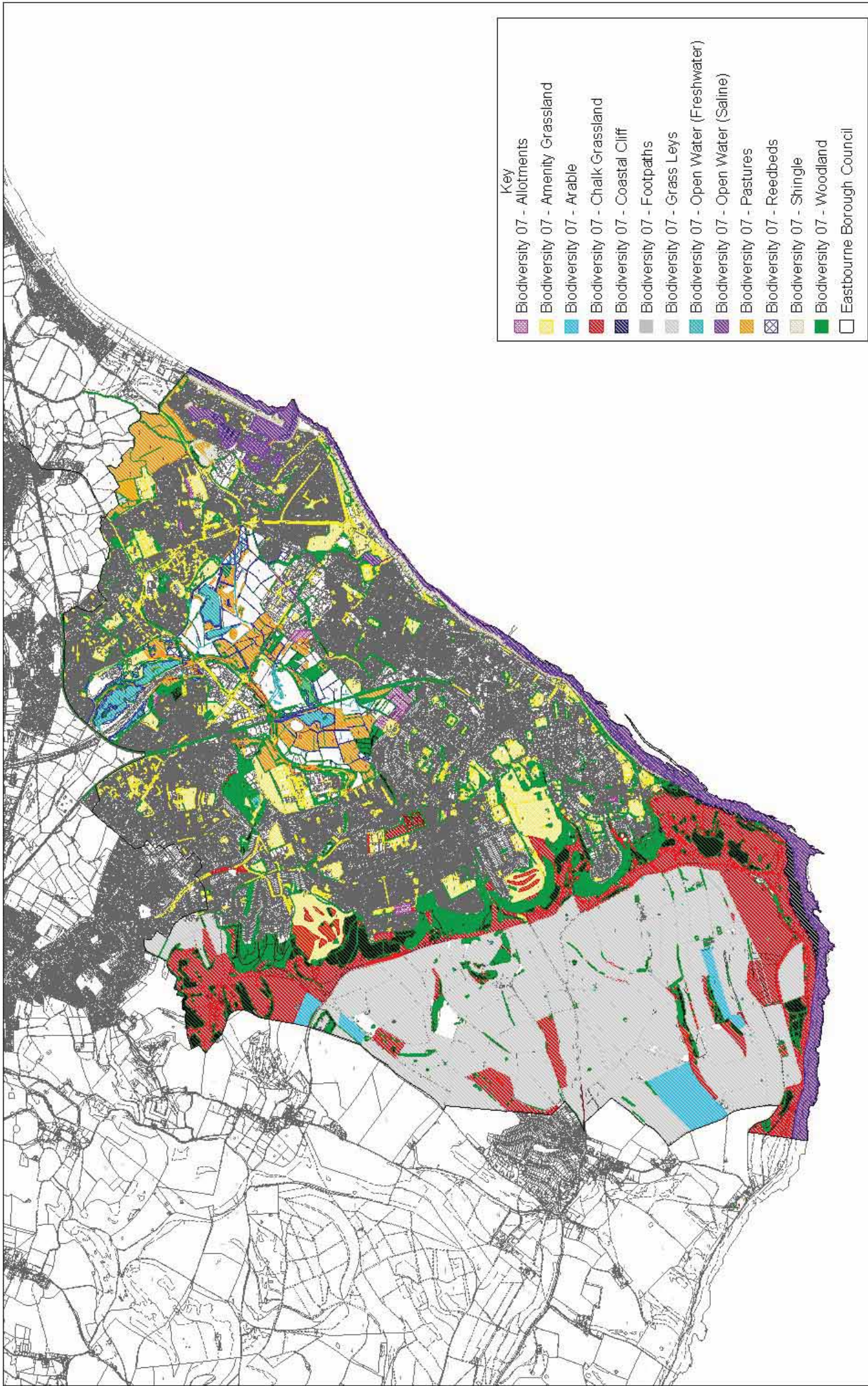
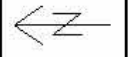


Figure 6.3 - Ancient Woodlands
 Eastbourne Biodiversity Assessment 2007
 Ash Partnership / DAVCAD

This map is based upon Ordnance Survey material with the permission of Ordnance Survey on behalf of the Controller of Her Majesty's Stationery Office (C) Crown copyright, unauthorised reproduction infringes Crown copyright and may lead to prosecution or civil proceedings.
 Eastbourne Borough Council
 LA10002 5.679 2008



- Key**
- Biodiversity 07 - Allotments
 - Biodiversity 07 - Amenity Grassland
 - Biodiversity 07 - Arable
 - Biodiversity 07 - Chalk Grassland
 - Biodiversity 07 - Coastal Cliff
 - Biodiversity 07 - Footpaths
 - Biodiversity 07 - Grass Leys
 - Biodiversity 07 - Open Water (Freshwater)
 - Biodiversity 07 - Open Water (Saline)
 - Biodiversity 07 - Pastures
 - Biodiversity 07 - Reedbeds
 - Biodiversity 07 - Shingle
 - Biodiversity 07 - Woodland
 - Eastbourne Borough Council



09 June 2008

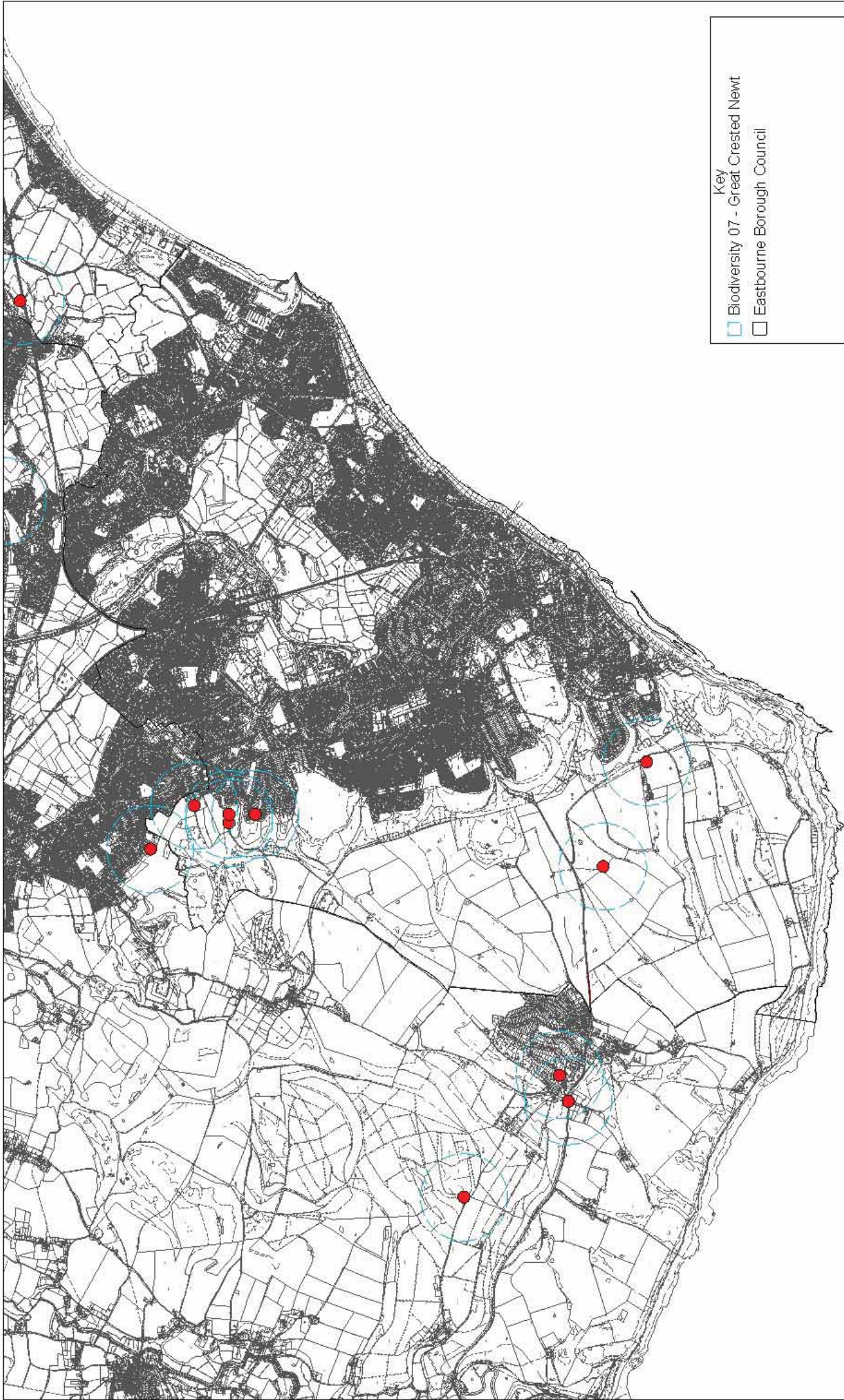
Scale 1:40000
 X: 561199 Y: 99585



Figure 7.1 – Habitat Plan

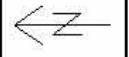
Eastbourne Biodiversity Assessment 2007
 Ash Partnership / DAYCAD

This map is based upon Ordnance Survey material with the permission of Ordnance Survey on behalf of the Controller of Her Majesty's Stationery Office (C) Crown copyright. Unauthorised reproduction infringes Crown copyright and may lead to prosecution or civil proceedings.
 Eastbourne Borough Council
 LA100/0258/09 2008



Key

- Biodiversity 07 - Great Crested Newt
- Eastbourne Borough Council



11 June 2008

Scale: 1:40000
X: 559708 Y: 99581

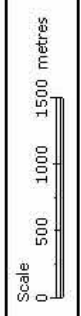
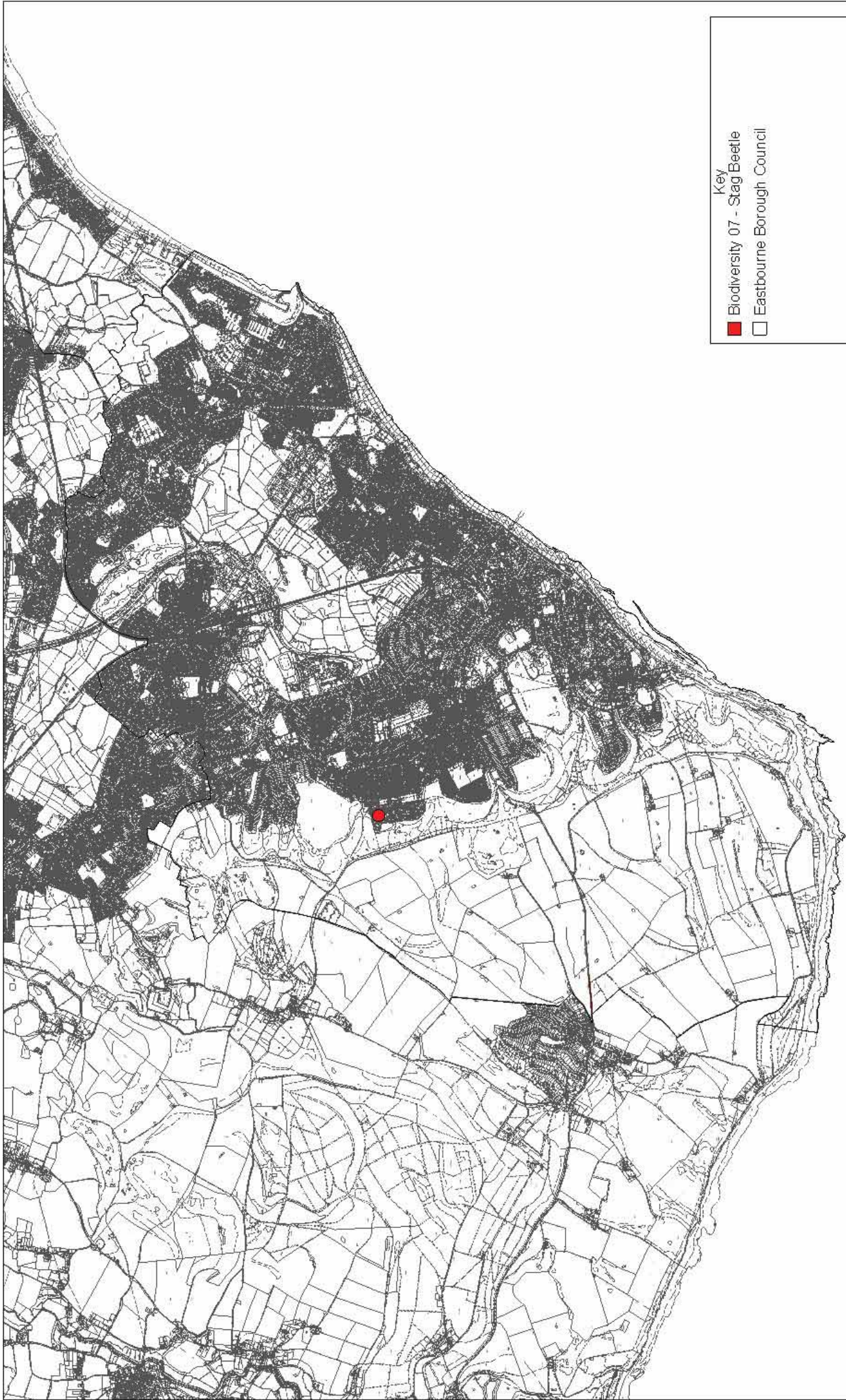


Figure 7.10 - Great Crested Newt

Eastbourne Biodiversity Assessment 2007
Ash Partnership / DAYCAD

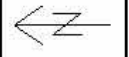
EASTBOURNE
Borough Council
www.eastbourne.gov.uk

This map is based upon Ordnance Survey material with the permission of Ordnance Survey on behalf of the Controller of Her Majesty's Stationery Office (C) Crown copyright. Unauthorised reproduction infringes Crown copyright and may lead to prosecution or civil proceedings.
Eastbourne Borough Council
LA1000256.P9 2008



Key

- Biodiversity 07 - Stag Beetle
- Eastbourne Borough Council



11 June 2008

Scale: 1:40000
X: 559825 Y: 99600

Scale 0 500 1000 1500 metres

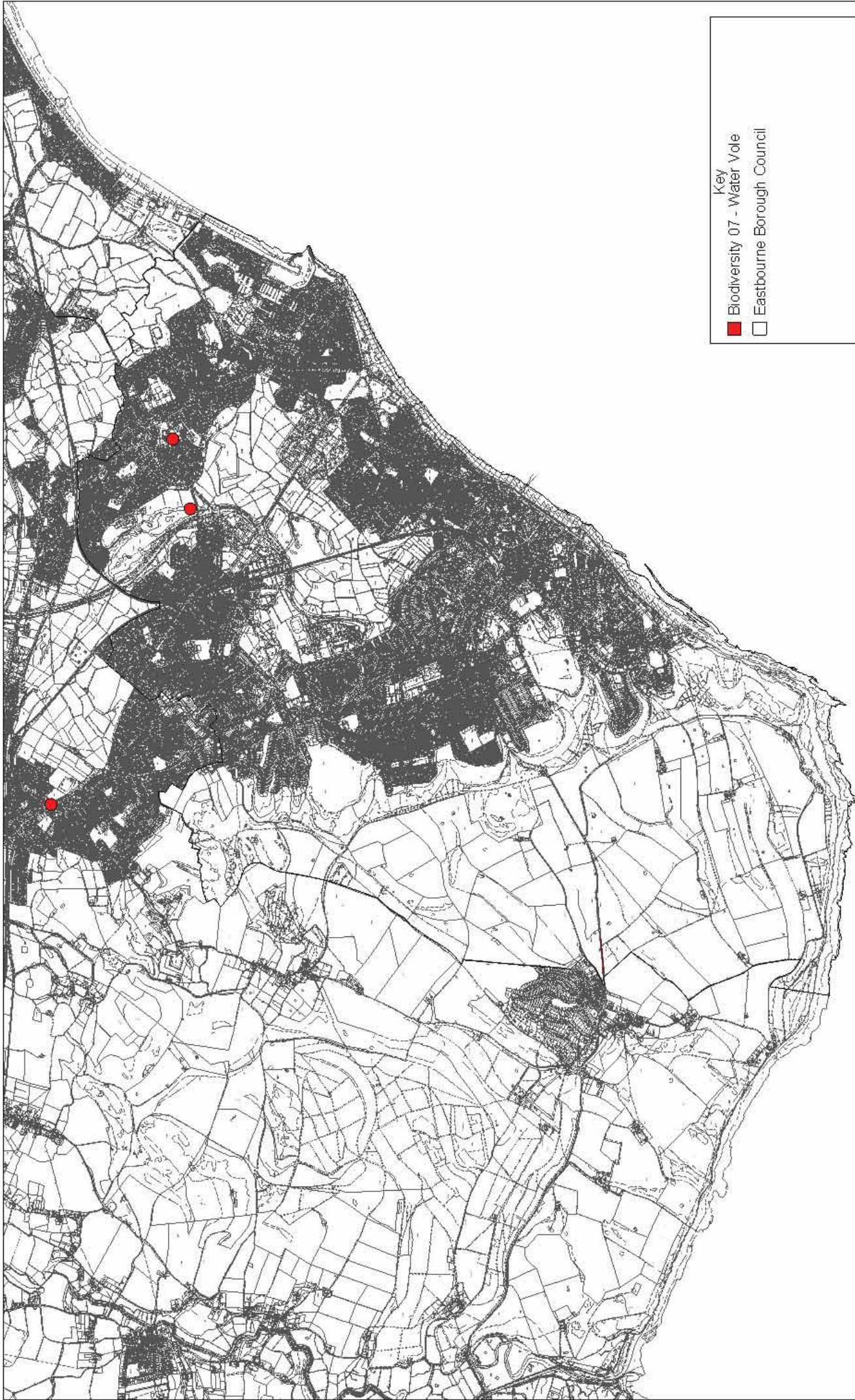
Figure 7.11 - Stag Beetle

Eastbourne Biodiversity Assessment 2007
Ash Partnership / DAYCAD

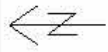
EASTBOURNE
Borough Council

www.eastbourne.gov.uk

This map is based upon Ordnance Survey material with the permission of Ordnance Survey on behalf of the Controller of Her Majesty's Stationery Office (C) Crown copyright. Unauthorised reproduction infringes Crown copyright and may lead to prosecution or civil proceedings.
Eastbourne Borough Council
LA10002516.P9 2008



- Key
- Biodiversity 07 - Water Vole
 - Eastbourne Borough Council



11 June 2008

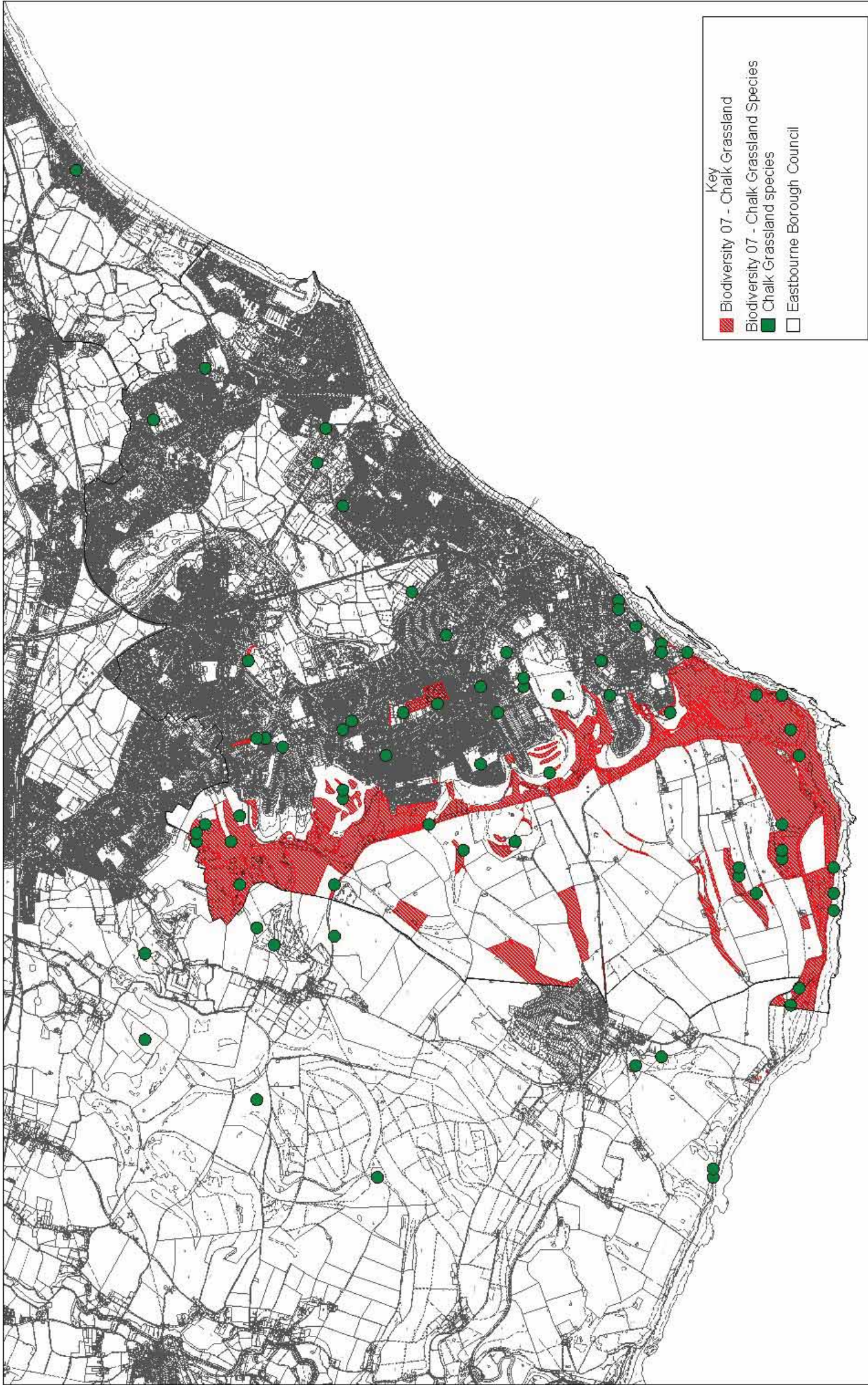
Scale: 1:40000
X: 559398 Y: 99736



Figure 7.12 - Water Vole

Eastbourne Biodiversity Assessment 2007
Ash Partnership / DAYCAD

This map is based upon Ordnance Survey material with the permission of Ordnance Survey on behalf of the Controller of Her Majesty's Stationery Office (C) Crown copyright. Unauthorised reproduction infringes Crown copyright and may lead to prosecution or civil proceedings.
Eastbourne Borough Council
LA1000256.P9 2008



Key

- Biodiversity 07 - Chalk Grassland
- Biodiversity 07 - Chalk Grassland Species
- Chalk Grassland species
- Eastbourne Borough Council

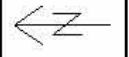


Figure 7.2 - Chalk Grassland

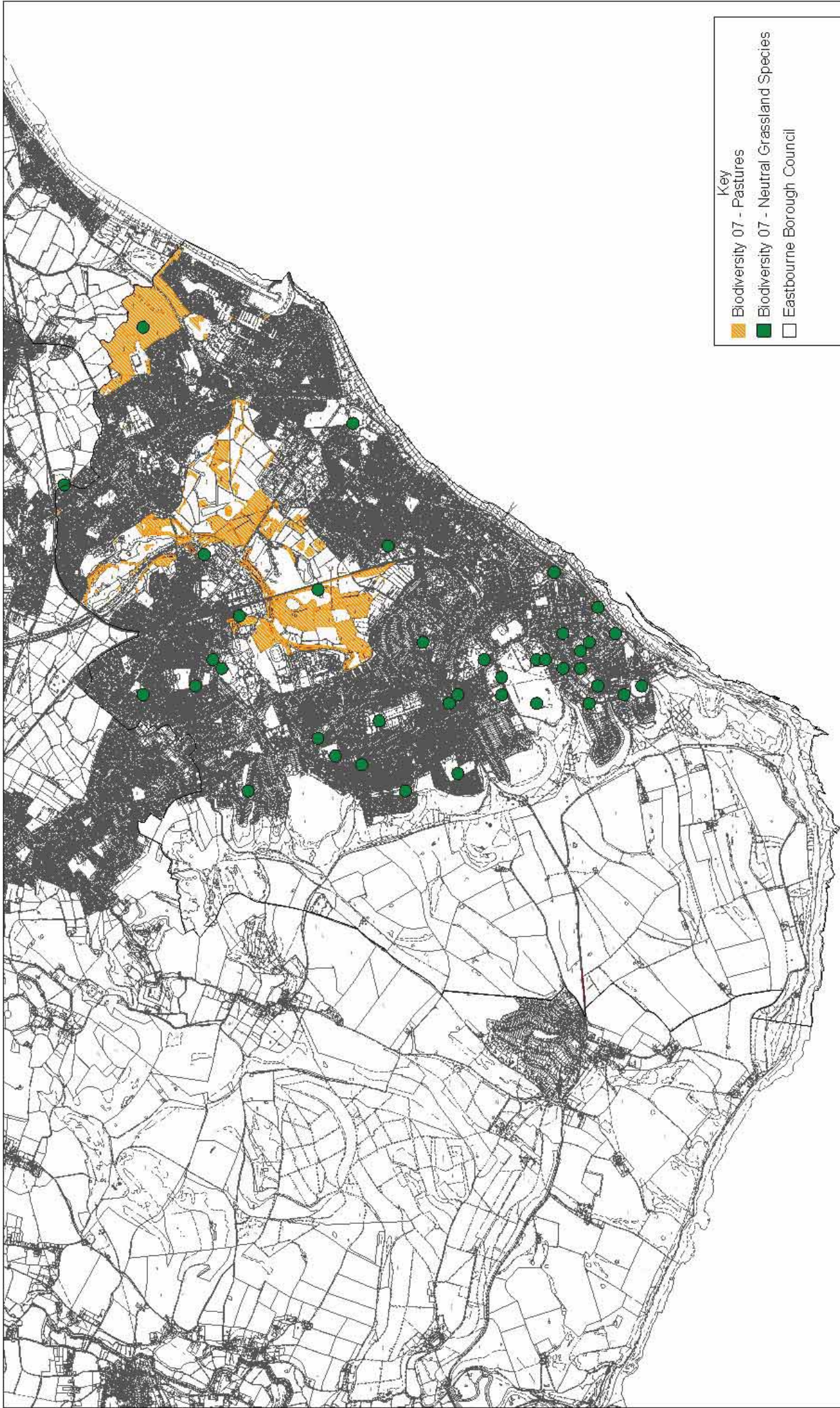
11 June 2008

Eastbourne Biodiversity Assessment 2007
Ash Partnership / DAYCAD

Scale 1:40000
X: 559728 Y: 99833

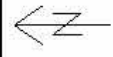
Scale 0 500 1000 1500 metres

This map is based upon Ordnance Survey material with the permission of Ordnance Survey on behalf of the Controller of Her Majesty's Stationery Office (C) Crown copyright. Unauthorised reproduction infringes Crown copyright and may lead to prosecution or civil proceedings.
Eastbourne Borough Council
LA100025879 2008



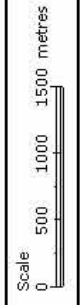
Key

- Biodiversity 07 - Pastures
- Biodiversity 07 - Neutral Grassland Species
- Eastbourne Borough Council



11 June 2008

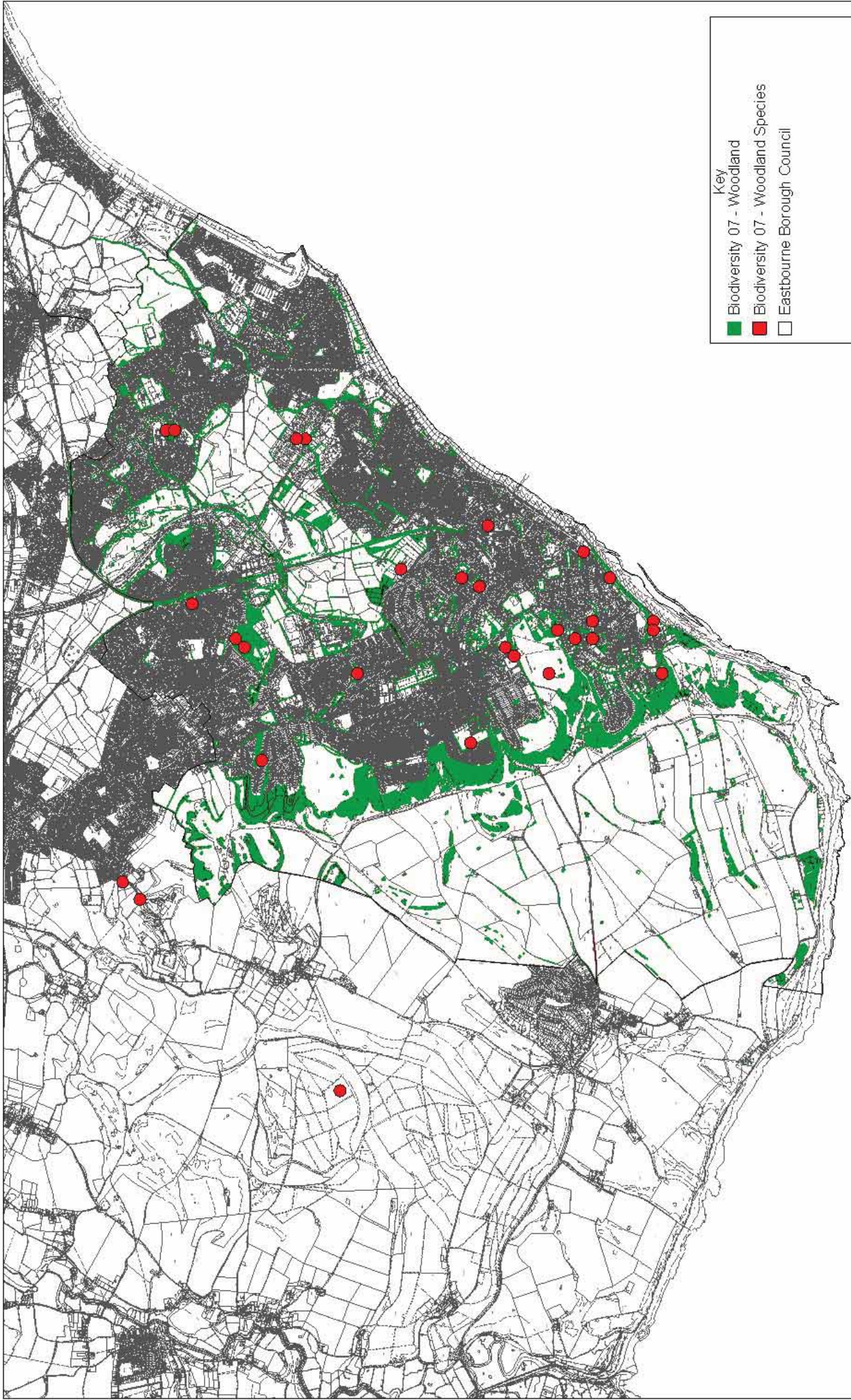
Eastbourne Biodiversity Assessment 2007
 Ash Partnership / DAYCAD



Scale: 1:40000
 X: 559689 Y: 99484

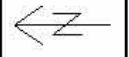
This map is based upon Ordnance Survey material with the permission of Ordnance Survey on behalf of the Controller of Her Majesty's Stationery Office (C) Crown copyright. Unauthorised reproduction infringes Crown copyright and may lead to prosecution or civil proceedings.
 Eastbourne Borough Council
 LA1000256 P9 2008

EASTBOURNE
 Borough Council
www.eastbourne.gov.uk



Key

- Biodiversity 07 - Woodland
- Biodiversity 07 - Woodland Species
- Eastbourne Borough Council



11 June 2008

Scale 1:40000

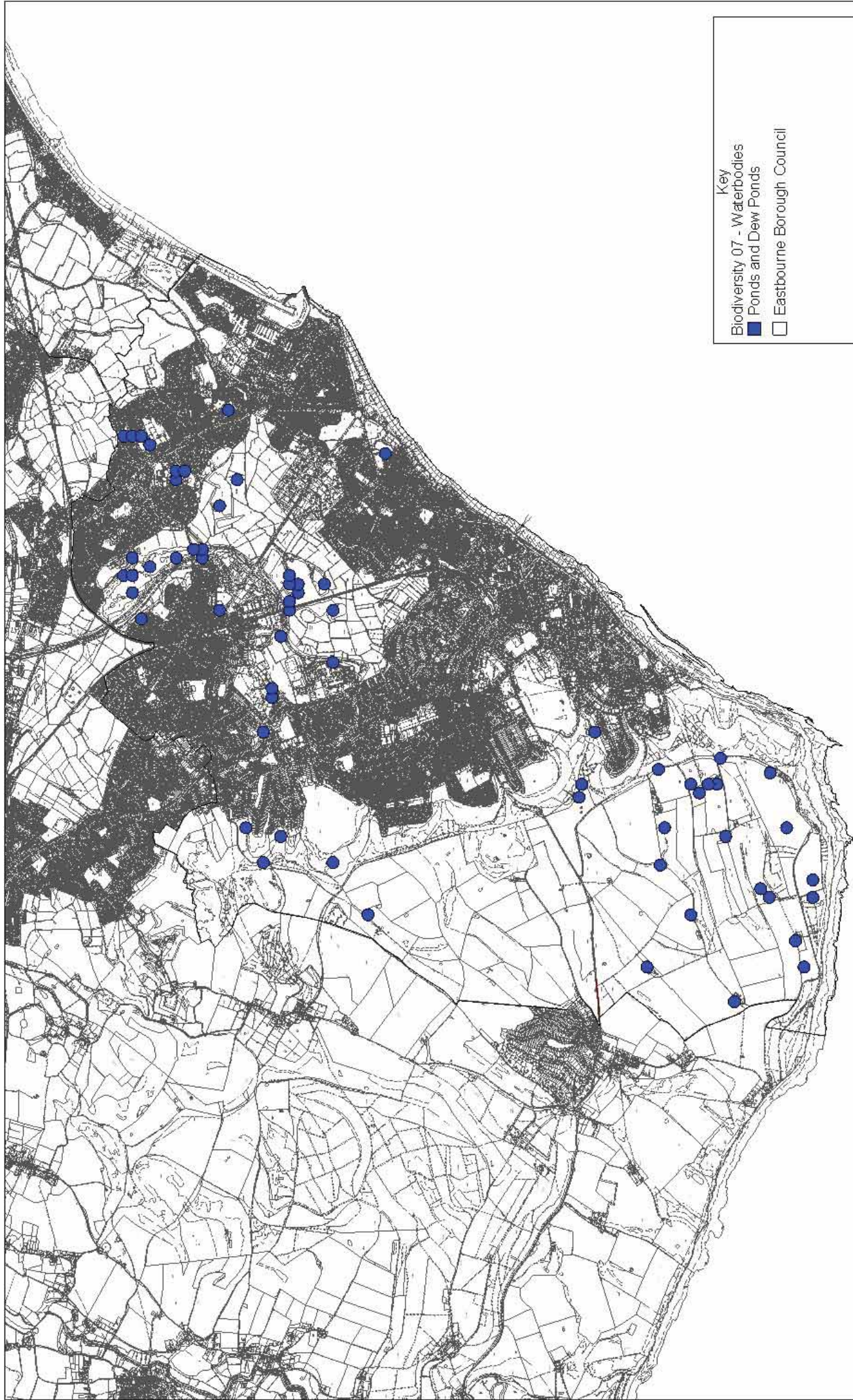


Eastbourne Biodiversity Assessment 2007
Ash Partnership / DAYCAD

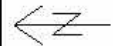
Figure 7.4 – Woodland

EASTBOURNE
Borough Council
www.eastbourne.gov.uk

This map is based upon Ordnance Survey material with the permission of Ordnance Survey on behalf of the Controller of Her Majesty's Stationery Office (C) Crown copyright. Unauthorised reproduction infringes Crown copyright and may lead to prosecution or civil proceedings.
Eastbourne Borough Council
LA1000258.P9 2008



Key
 Biodiversity 07 - Waterbodies
 ■ Ponds and Dew Ponds
 □ Eastbourne Borough Council



11 June 2008

Scale: 1:40000
 X: 559864 Y: 99652

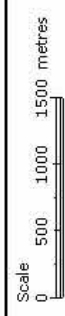
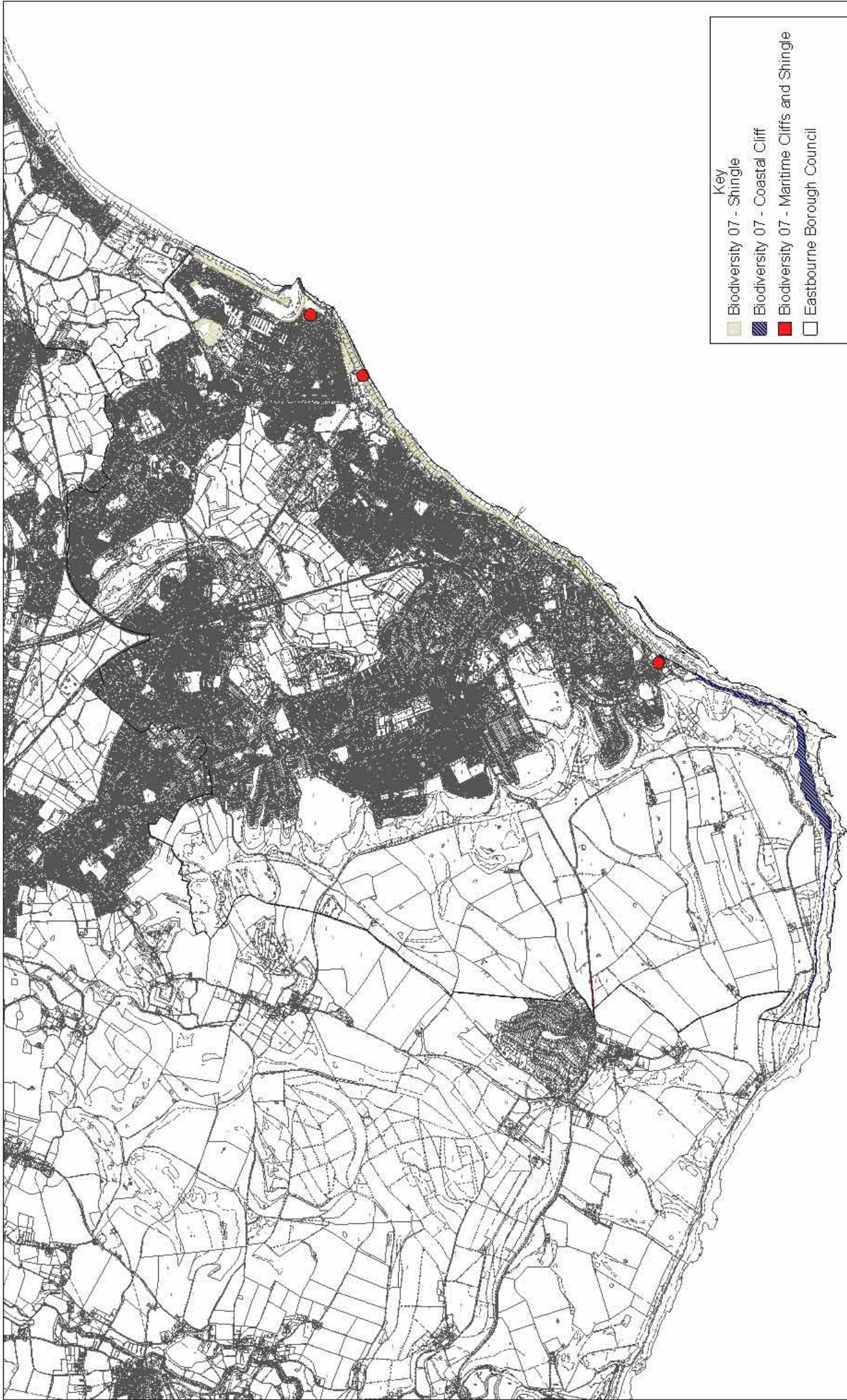


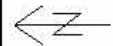
Figure 7.5 - Waterbodies

Eastbourne Biodiversity Assessment 2007
 Ash Partnership / DAYCAD

This map is based upon Ordnance Survey material with the permission of Ordnance Survey on behalf of the Controller of Her Majesty's Stationery Office (C) Crown copyright, unauthorised reproduction infringes Crown copyright and may lead to prosecution or civil proceedings.
 Eastbourne Borough Council
 LA100025679 2008



- Key
- Biodiversity 07 - Shingle
 - Biodiversity 07 - Coastal Cliff
 - Biodiversity 07 - Maritime Cliffs and Shingle
 - Eastbourne Borough Council



11 June 2008

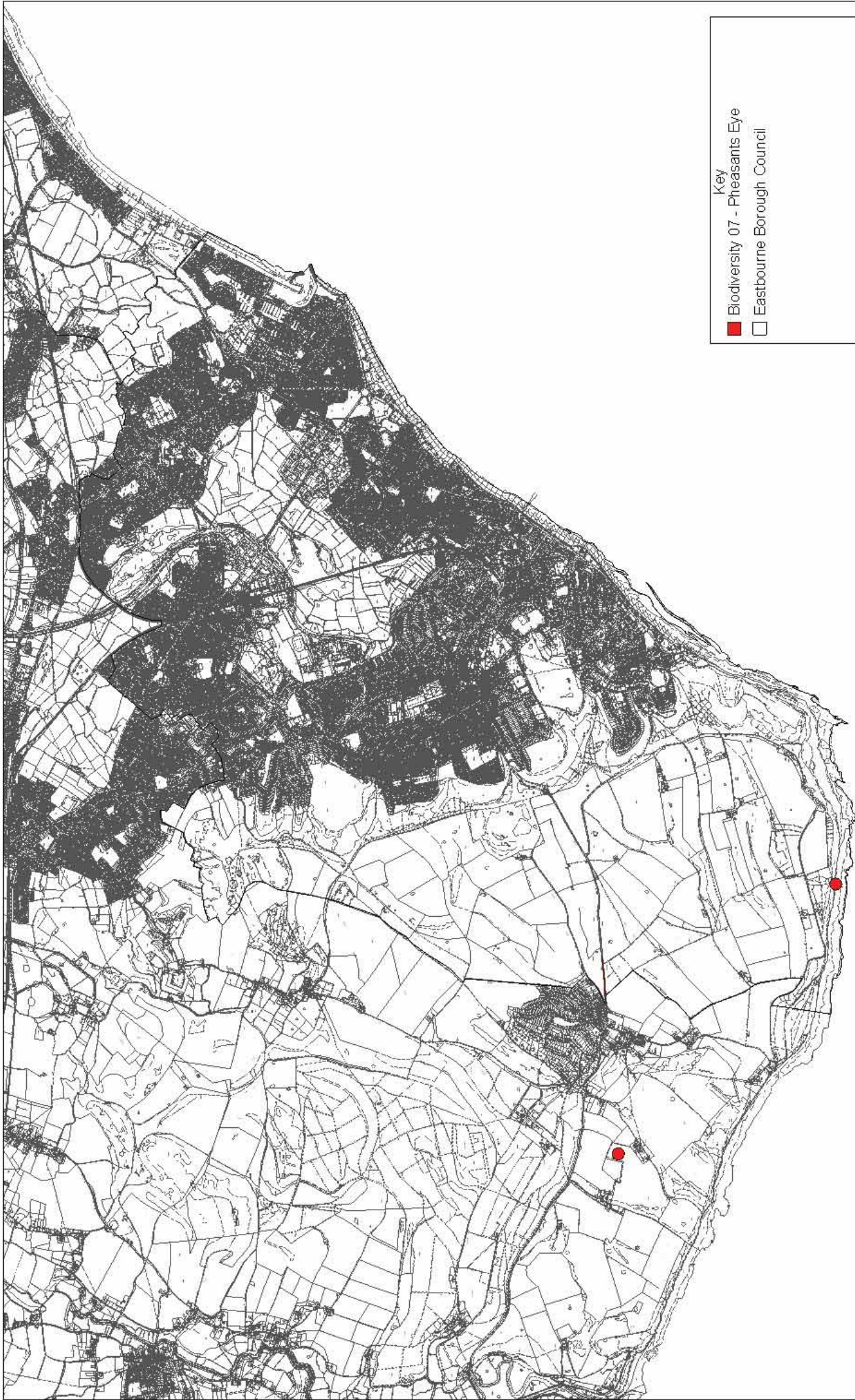
Scale: 1:40000
X: 559767 Y: 99619



Figure 7.6 – Maritime Cliff, Vegetated and Bare Shingle

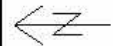
Eastbourne Biodiversity Assessment 2007
Ash Partnership / DAYCAD

This map is based upon Ordnance Survey material with the permission of Ordnance Survey on behalf of the Controller of Her Majesty's Stationery Office (C) Crown copyright. Unauthorised reproduction infringes Crown copyright and may lead to prosecution or civil proceedings.
Eastbourne Borough Council
LA1000258.P9 2008



Key

- Biodiversity 07 - Pheasants Eye
- Eastbourne Borough Council



11 June 2008

Scale: 1:40000
X: 559611 Y: 99755

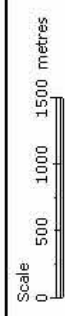
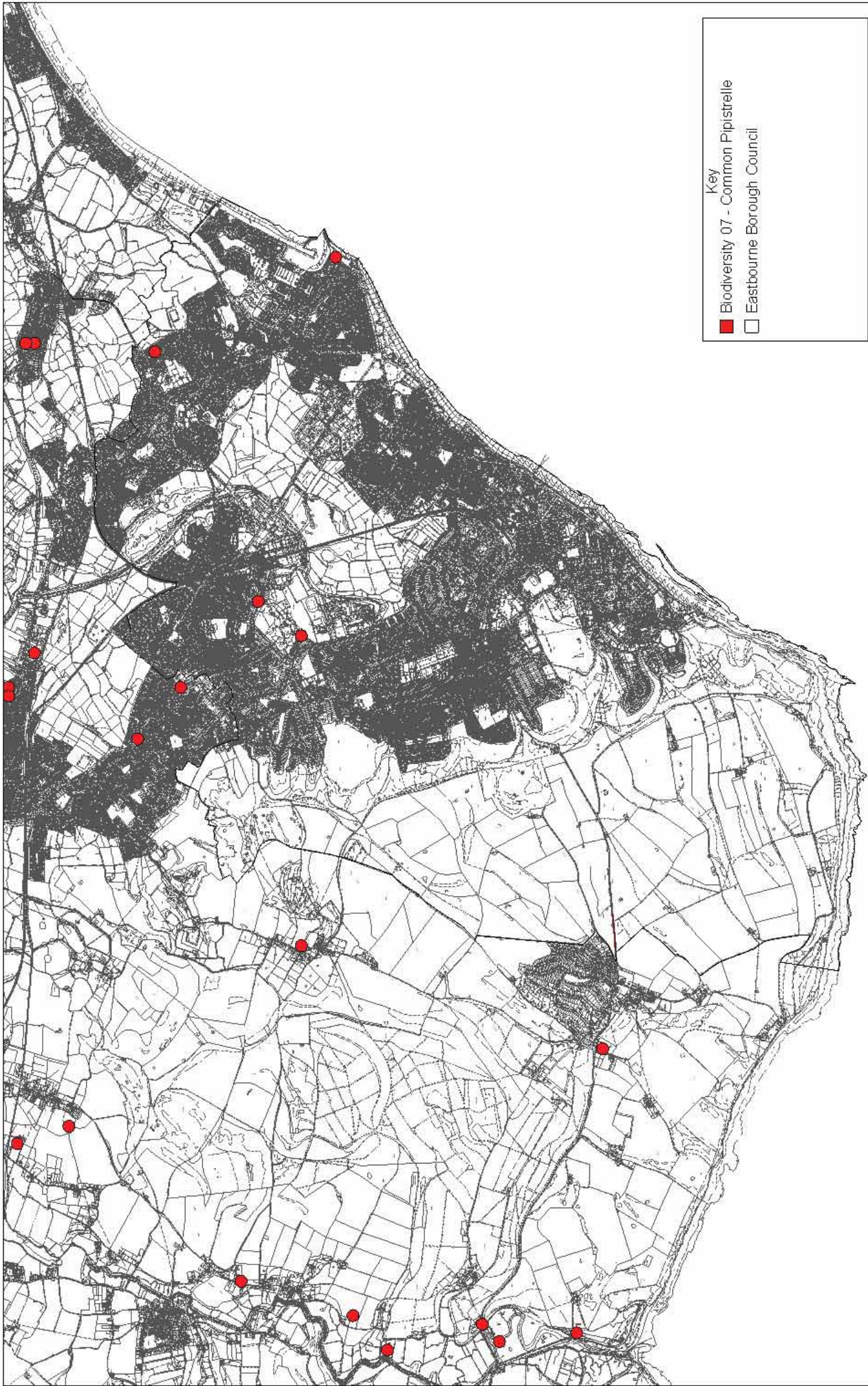


Figure 7.7 - Pheasants Eye

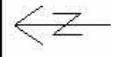
Eastbourne Biodiversity Assessment 2007
Ash Partnership / DAYCAD

EASTBOURNE
Borough Council
www.eastbourne.gov.uk

This map is based upon Ordnance Survey material with the permission of Ordnance Survey on behalf of the Controller of Her Majesty's Stationery Office (C) Crown copyright. Unauthorised reproduction infringes Crown copyright and may lead to prosecution or civil proceedings.
Eastbourne Borough Council
LA1000258.P9 2008



- Key
- Biodiversity 07 - Common Pipistrelle
 - Eastbourne Borough Council



11 June 2008

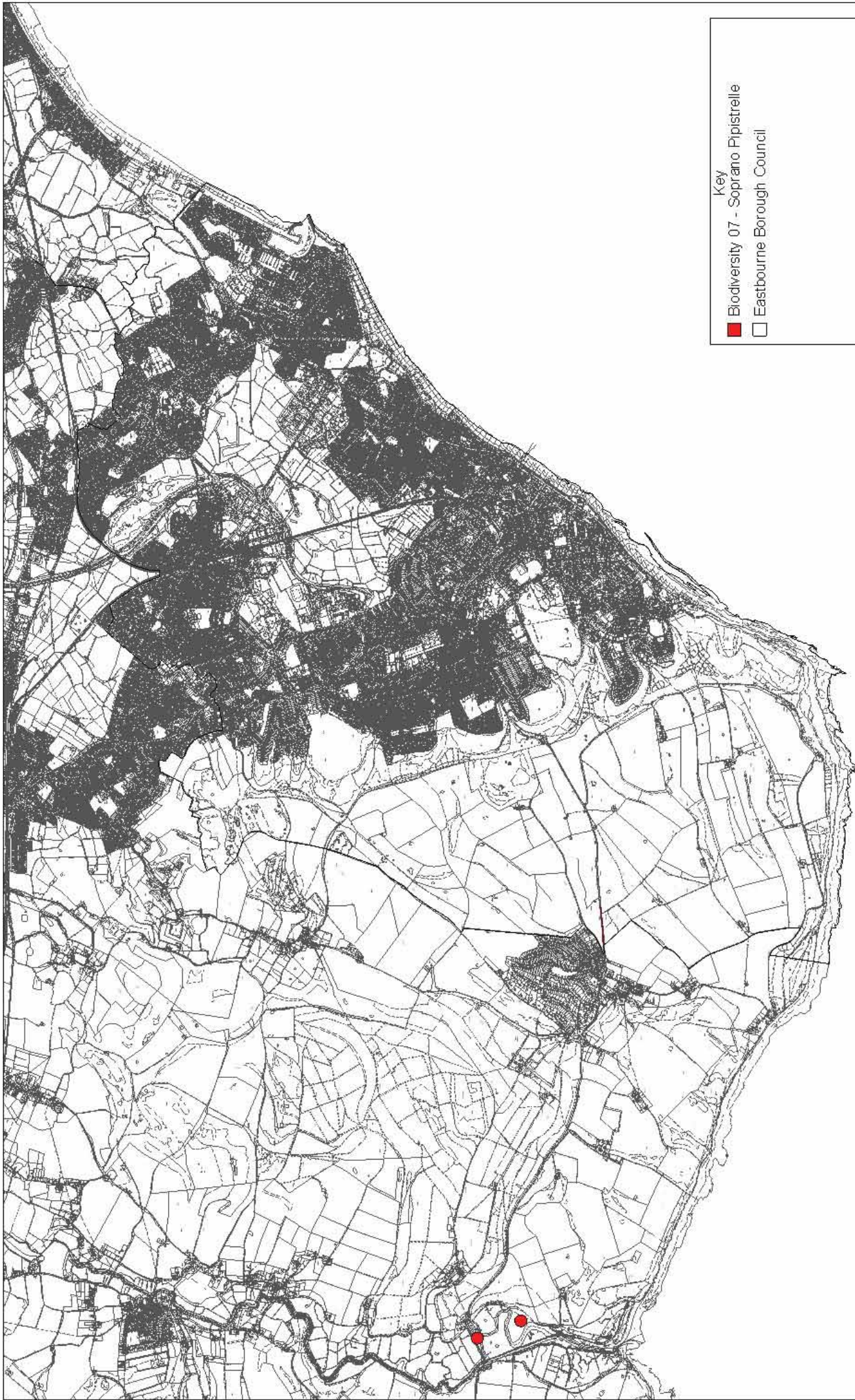
Scale: 1:40000

X: 559223 Y: 99949

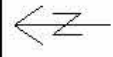
Eastbourne Biodiversity Assessment 2007
Ash Partnership / DAYCAD

Figure 7.8 - Common Pipistrelle

This map is based upon Ordnance Survey material with the permission of Ordnance Survey on behalf of the Controller of Her Majesty's Stationery Office (C) Crown copyright. Unauthorised reproduction infringes Crown copyright and may lead to prosecution or civil proceedings.
Eastbourne Borough Council
LA1000258.P9 2008



- Key
- Biodiversity 07 - Soprano Pipistrelle
 - Eastbourne Borough Council



11 June 2008

Scale: 1:40000
X: 559029 Y: 99736

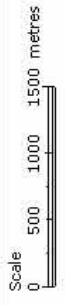
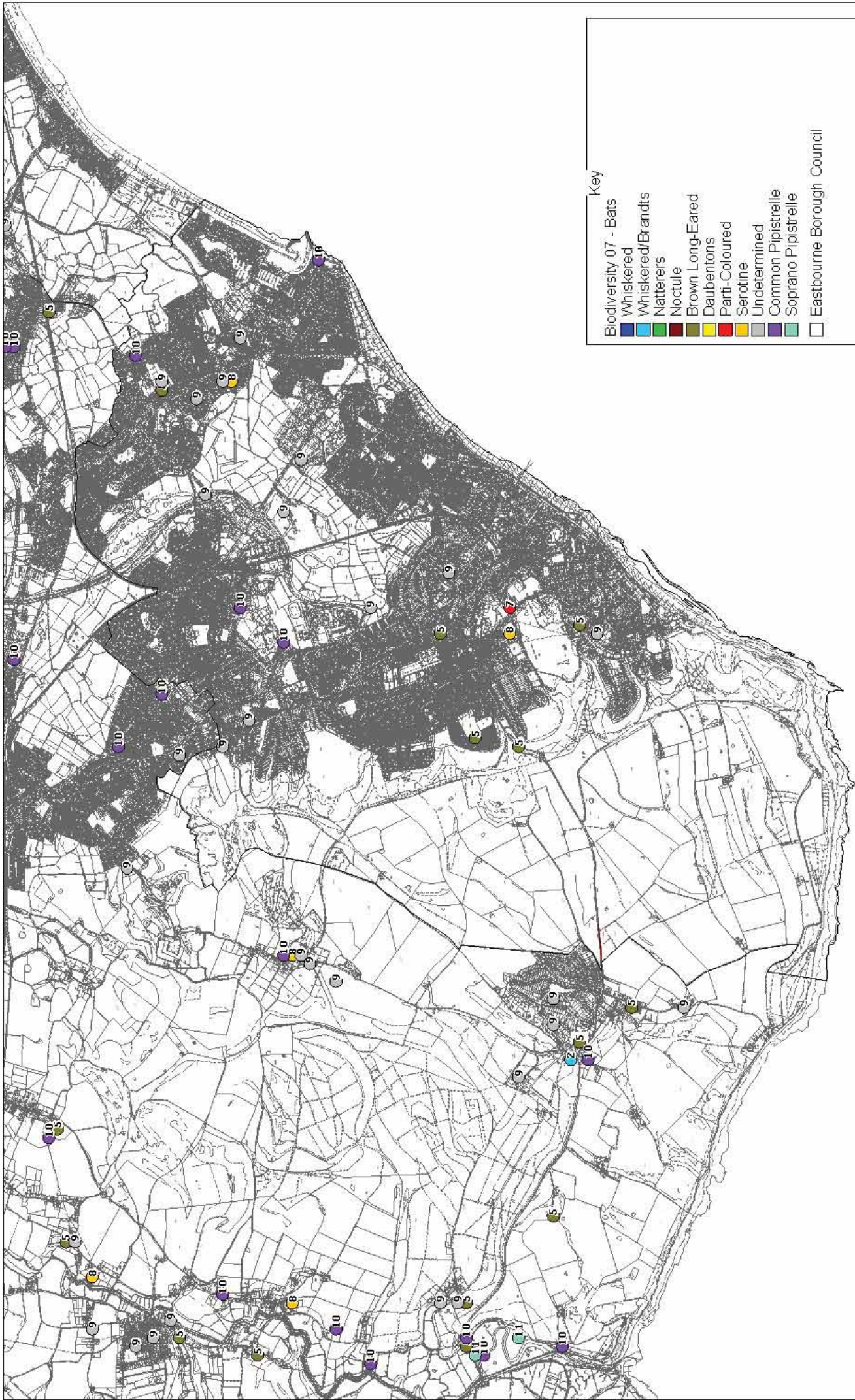


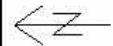
Figure 7.9 – Soprano Pipistrelle

Eastbourne Biodiversity Assessment 2007
Ash Partnership / DAYCAD

This map is based upon Ordnance Survey material with the permission of Ordnance Survey on behalf of the Controller of Her Majesty's Stationery Office (C) Crown copyright. Unauthorised reproduction infringes Crown copyright and may lead to prosecution or civil proceedings.
Eastbourne Borough Council
LA1000256 P9 2008



- Key**
- Biodiversity 07 - Bats
 - Whiskered
 - Whiskered/Brandts
 - Natterers
 - Noctule
 - Brown Long-Eared
 - Daubentons
 - Parti-Coloured
 - Serotine
 - Undetermined
 - Common Pipistrelle
 - Soprano Pipistrelle
 - Eastbourne Borough Council



12 June 2008

Scale 1: 40000

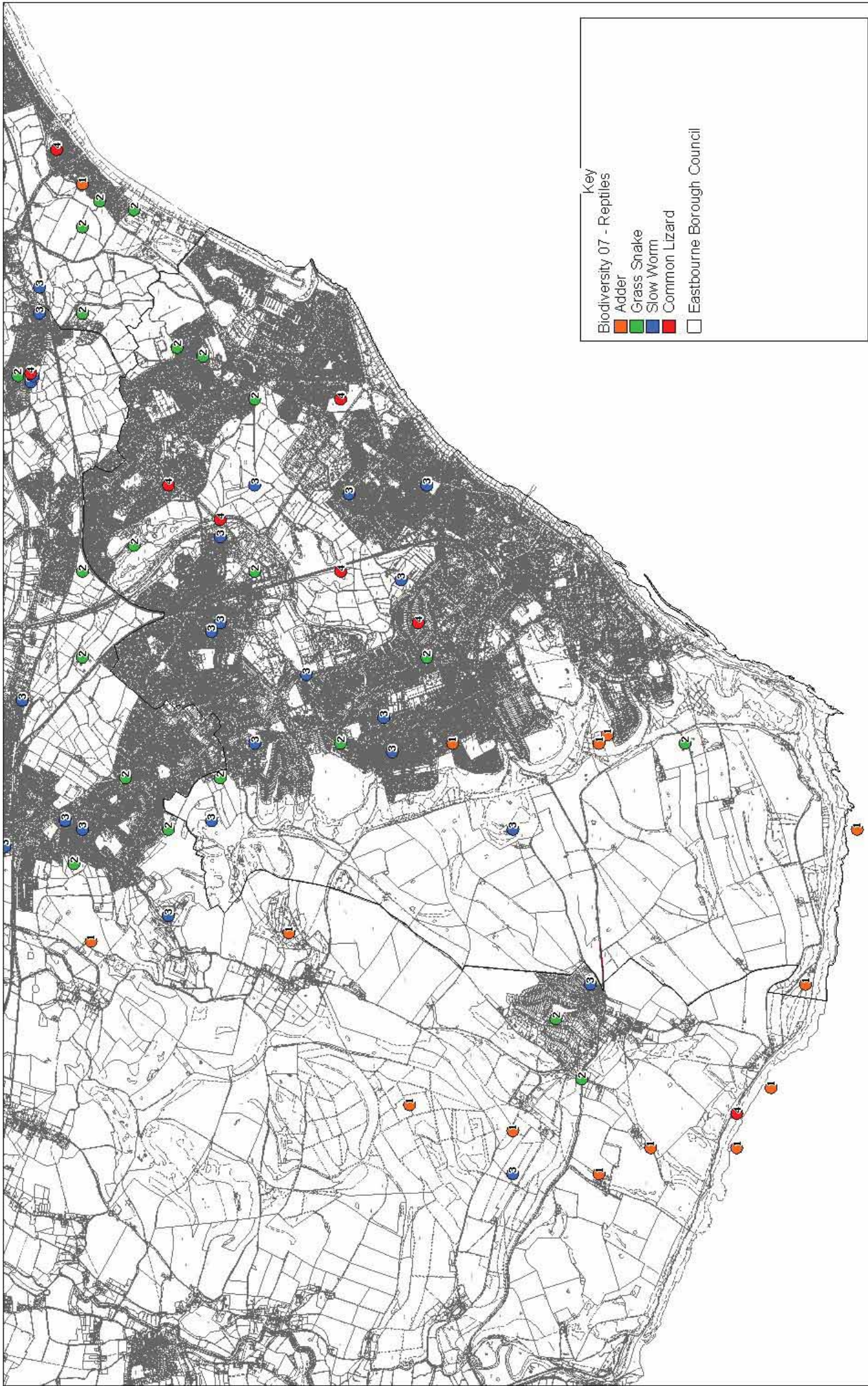
X: 559224 Y: 99710



Figure 8.1 - Bats

Eastbourne Biodiversity Assessment 2007
Ash Partnership / DAYCAD

This map is based upon Ordnance Survey material with the permission of Ordnance Survey on behalf of the Controller of Her Majesty's Stationery Office (C) Crown copyright. Unauthorised reproduction infringes Crown copyright and may lead to prosecution or civil proceedings.
Eastbourne Borough Council
LA1000258.P9.2008

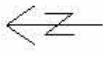


Key

Biodiversity 07 - Reptiles

- Adder
- Grass Snake
- Slow Worm
- Common Lizard

□ Eastbourne Borough Council



12 June 2008

Scale: 1:40000

Scale 0 500 1000 1500 metres

Eastbourne Biodiversity Assessment 2007

Ash Partnership / DAYCAD

Figure 8.2 - Reptiles

This map is based upon Ordnance Survey material with the permission of Ordnance Survey on behalf of the Controller of Her Majesty's Stationery Office (C) Crown copyright. Unauthorised reproduction infringes Crown copyright and may lead to prosecution or civil proceedings.
Eastbourne Borough Council
LA100025679 2008