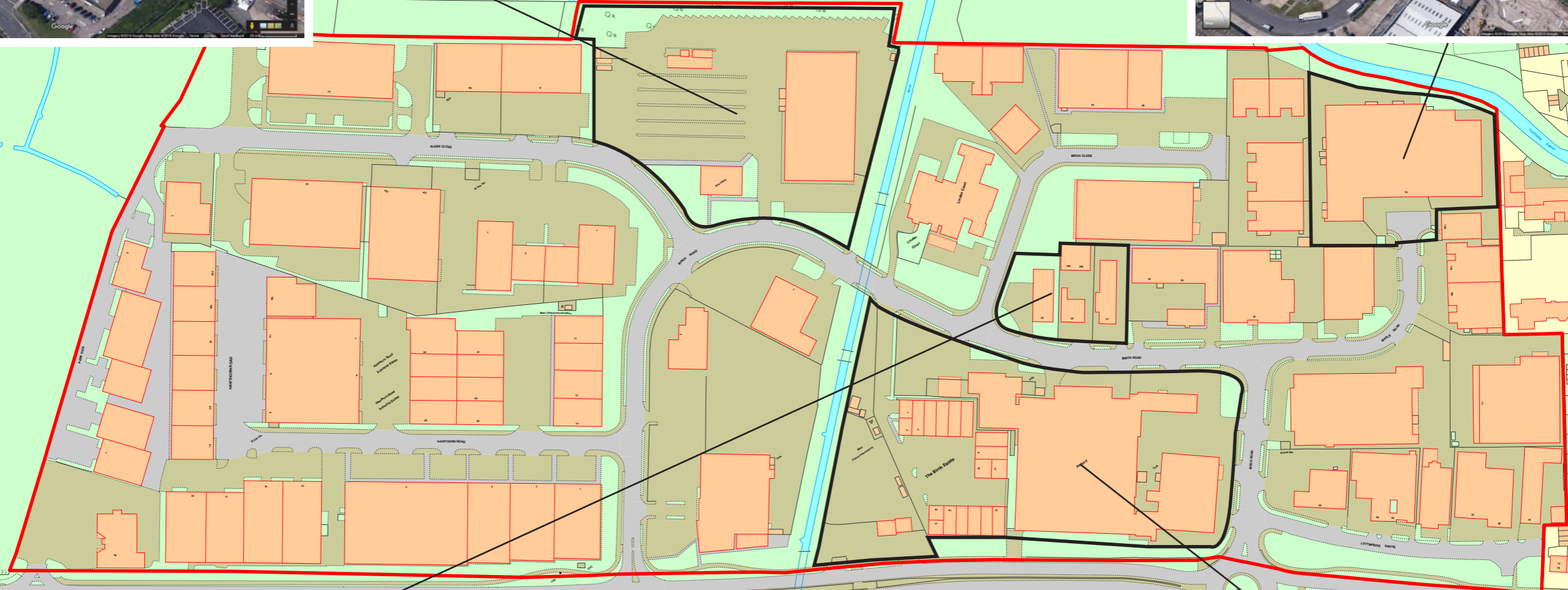


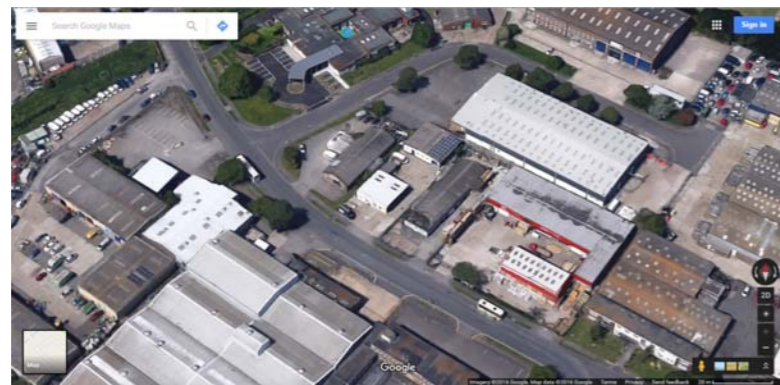
**Eastbourne Buses Depot (1.58 ha)**



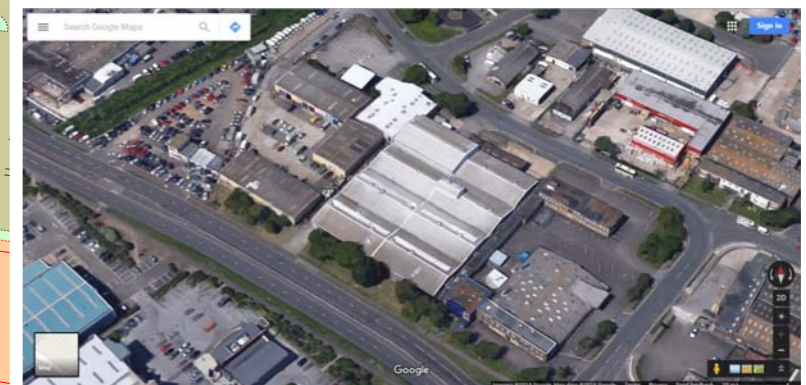
**16a Maple Close (0.75 ha)**



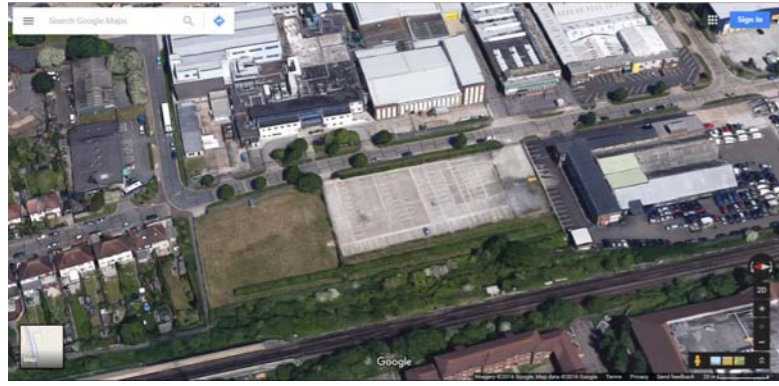
**21 - 23 Birch Road (0.31 ha)**



**Alfa Laval + Birch Estate (2.19 ha)**



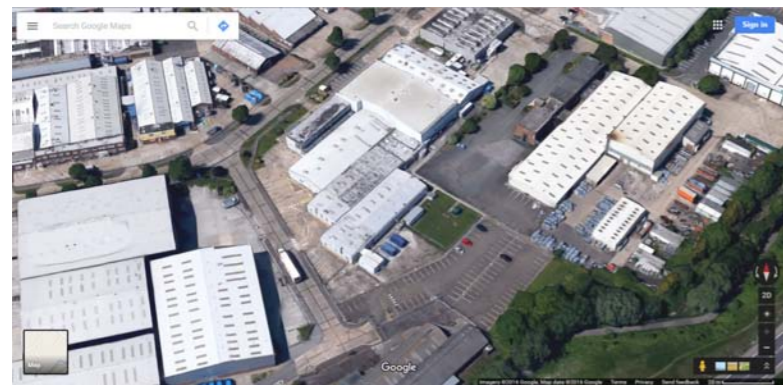
**Brampton Road Open Space / Car Park (0.81 ha)**



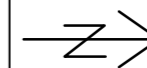
**1 - 3 Faraday Close (0.39 ha)**

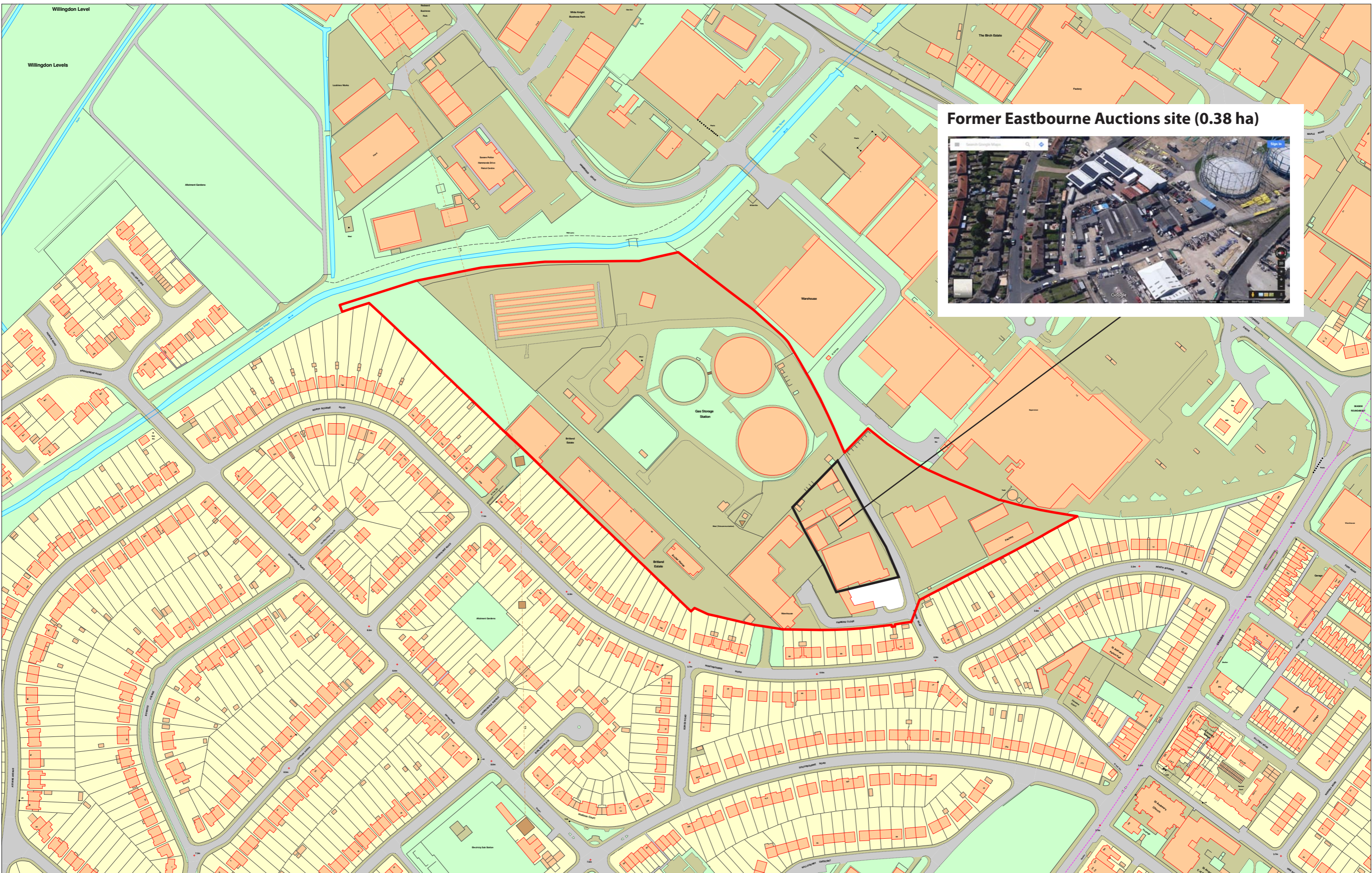


**Edwards Extension / Car Park (0.34 ha)**



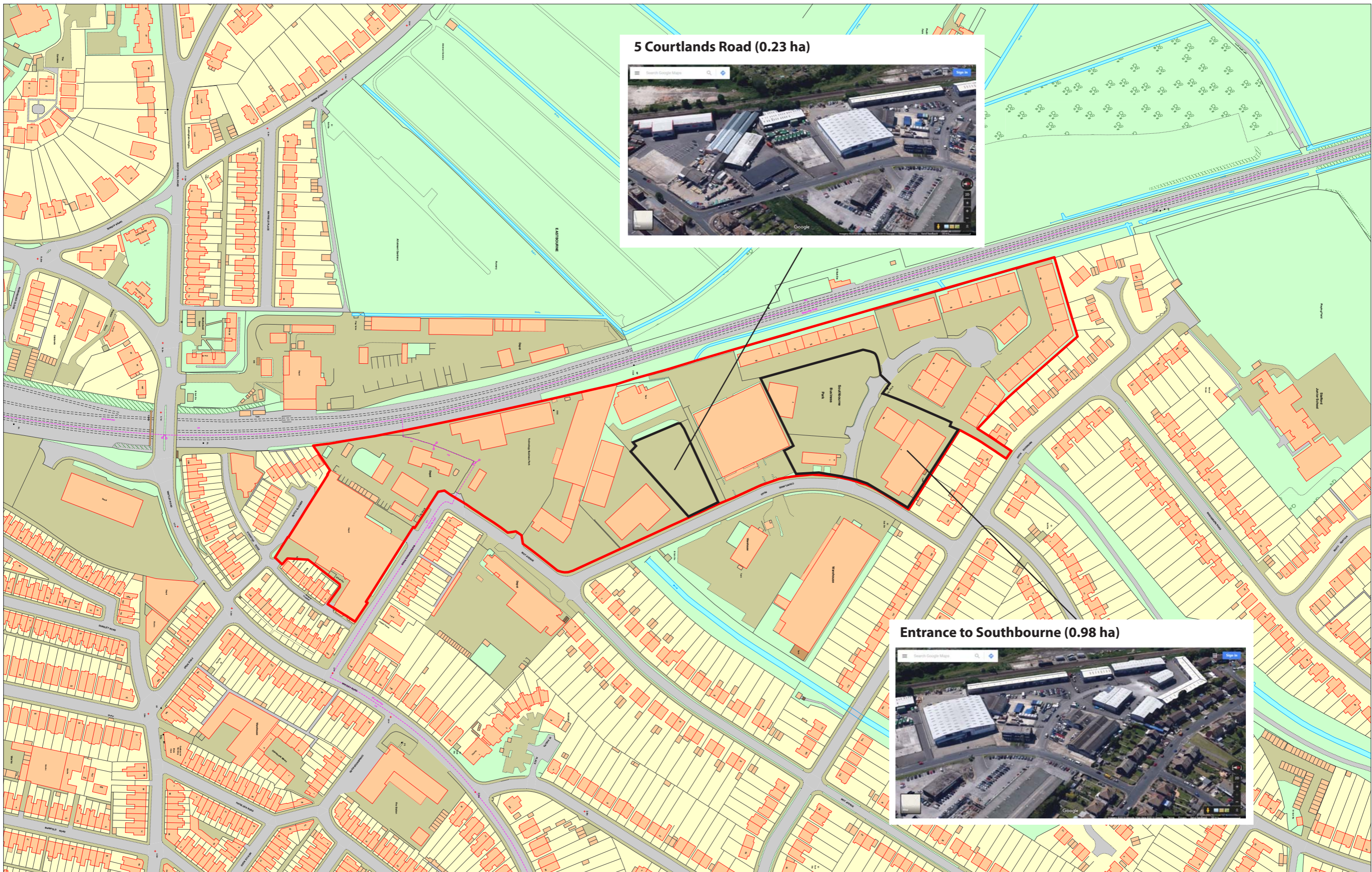
**4 - 6 Marshall Road (0.56 ha)**





**Former Eastbourne Auctions site (0.38 ha)**

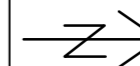


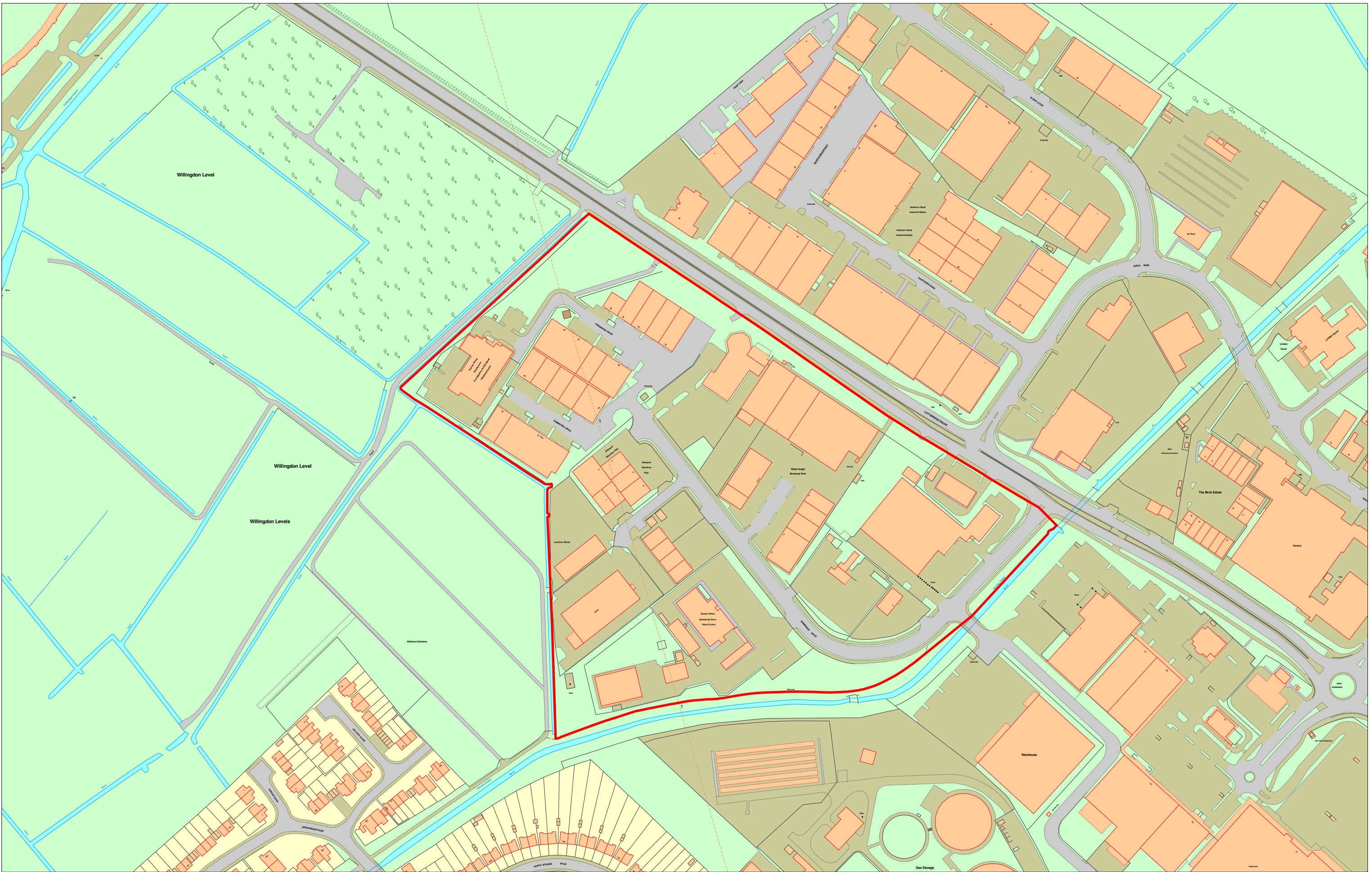


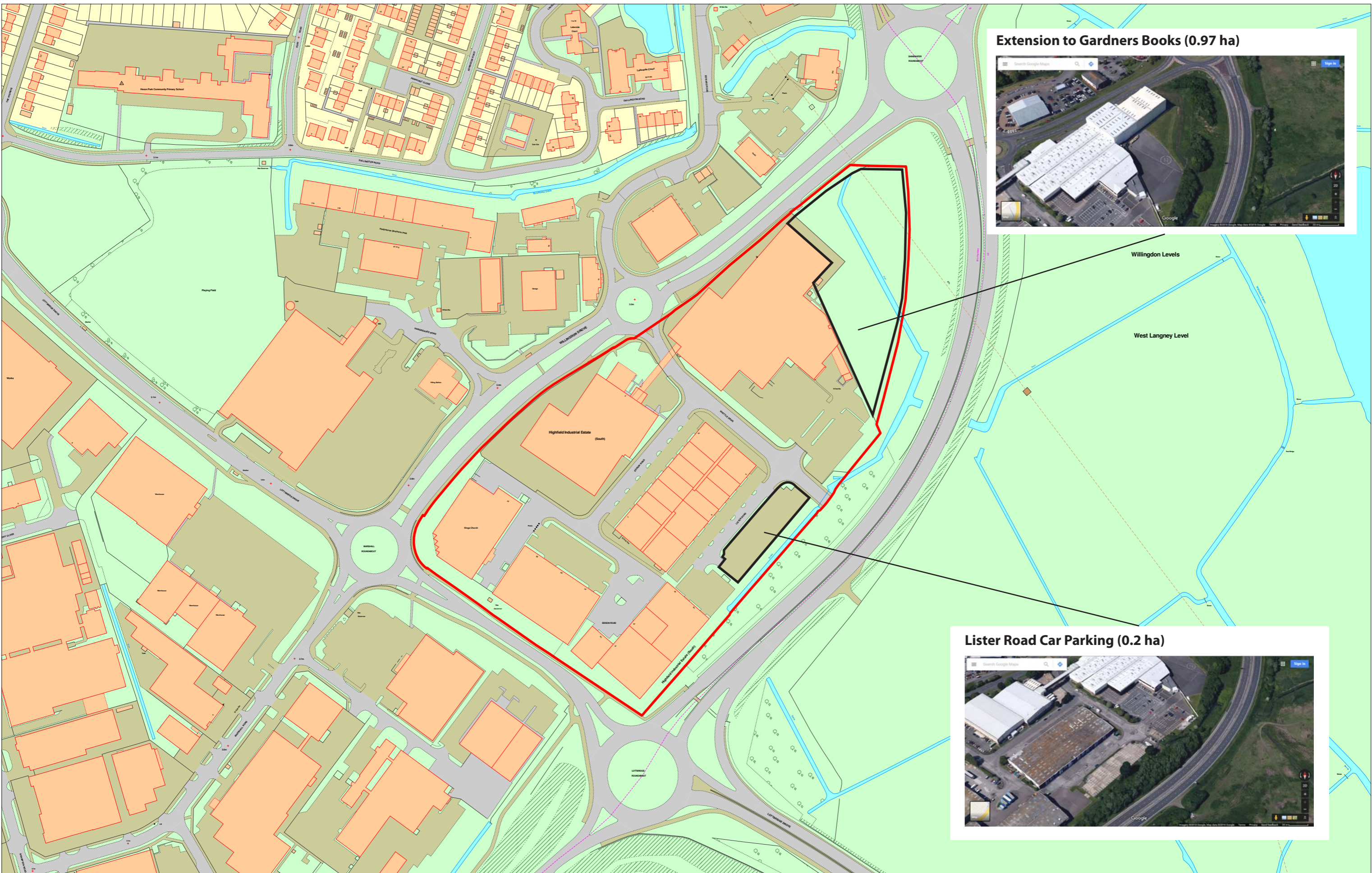
**5 Courtlands Road (0.23 ha)**



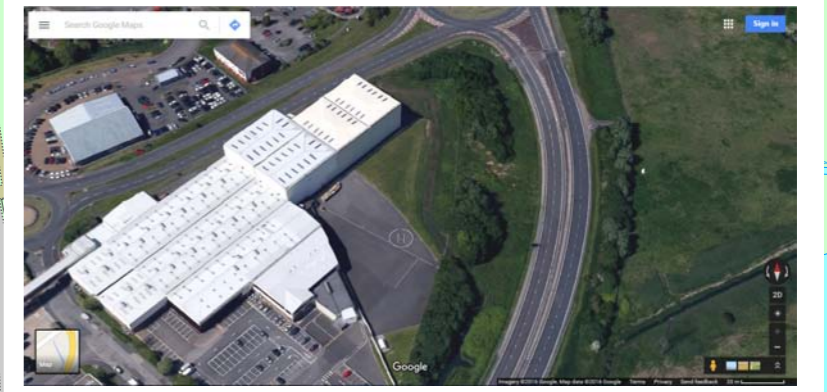
**Entrance to Southbourne (0.98 ha)**







**Extension to Gardners Books (0.97 ha)**



**Lister Road Car Parking (0.2 ha)**

