



Keeping the Estate TIDY



Nationally, the cost of keeping our streets clean is close to £1 billion per year and our 'throwaway culture' is usually blamed for this huge clean-up bill. It's thought there is now 500% more litter on the streets than there was in the 1960's, with an estimated 2 million pieces thrown onto the streets every year. Chewing gum, fast food wrappers and cigarette butts are the usual suspects. A discarded cigarette takes about 12 years to degrade fully and leaks toxins like cadmium, lead and arsenic into soil and waterways.

Everyone has the right to live in a clean, litter-free environment, and similarly, everyone has a

part to play in reducing the amount of litter on our streets.

What is required is a change in attitudes.

Easier said than done, you might say, but in a time of austerity, should we be spending hundreds of millions of pounds on clearing up litter when we could be spending it on hospitals and schools?

What you can do



- **Always use designated bins** for cigarette butts and chewing gum.
- **Don't throw litter out of your car window**, put rubbish in a carrier bag and put it in the bin when you get home.
- **If you can't find a bin** for litter when you are out, put the rubbish in your pocket or handbag until you find one or until you get home.
- **Reuse plastic bags** you already have at home or buy a bag for life when you go shopping.
- **Help out by joining the Landport litter pick on the last Sunday of every month** (see back page) – it's family friendly and everyone is welcome!



Community Café News

Following a lot of thought, a risk assessment and input from the Landport Residents Association, the café will be re-opening its doors to the community on Friday 11 February and everyone is invited! The team can't wait to see you all again in person and take the opportunity to thank the amazing delivery volunteers who helped deliver over 5000 meals across Lewes during lockdowns.

Emily Clarke (*pictured right*) and Debbie Twitchen will be hosting the event at Landport Community Hub so that people can fit into the well-ventilated space safely. To make this possible, there will be a few changes to the way we operate –

- The café will be open for a monthly community feast on the second Friday of every month on a 'pay as you feel' basis as before.



- The menu will be published on the Landport Community Cafe Facebook page on the Monday before we open with instructions about how to place your order and the deadline. There will also be a free delivery service to local people who are isolating or unwell.
- New opening hours are 6.30-8pm - keep your eyes peeled for announcements about entertainment on the night!
- To keep everyone safe, we'll be taking guests' temperatures on the door with a contact-free thermometer.
- We'll be encouraging everyone to take a lateral flow test on the day before coming and asking people to stay home if they are feeling unwell with COVID-19 symptoms.



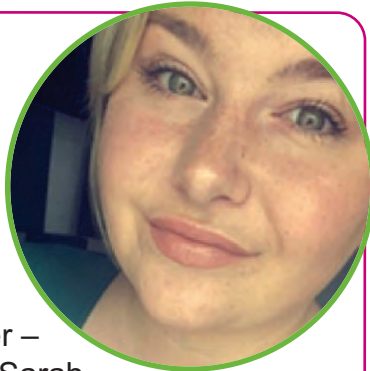
Your Housing Officer

Billie Webster

(Senior Caseworker – Housing) replaced Sarah Cager as the Landport Estate officer on 10 January.

Billie's role is to help with any tenancy related issues that might arise, but she also hopes to get involved in youth services and any community events on the estate.

You can get in touch with her by emailing billie.webster@lewes-eastbourne.gov.uk or by calling her on: 07595 062946



Landport Foodbank

The Foodbank is currently feeding **136 individuals** made up of 55 households (27 families / 28 singles and couples).

Demand has continued to grow, but thanks to a dedicated team of volunteers who mostly live on the estate, we have been able to rise to the challenge. You can help us and your community by donating fresh food or other supplies at the Foodbank in Horsfield Road on Mondays between 10am and 1pm. Please note that all our clients at Landport Foodbank are referred to us by a professional agency.



Food collected from Lewes supermarkets on 11 December 2021.

If you need more information, please email: debbietwitchen@gmail.com

Community Bus outings consultation

We would be interested to know if anyone on the estate is interested in the community bus outings restarting this Spring on Sundays? There'd be a nominal cost of approximately 50p to cover a range of trips to garden centres,



beauty spots, shopping centres, lunch venues or anywhere people fancy going.

You can register your interest, with no obligation, by emailing: **Cllr.Sains@Lewes-tc.gov.uk** or by dropping a note labelled 'community bus consultation' into the Tenant Resource Centre, Landport with your name, contact number or email address.

How do I contact Homes First?



Many issues can now be reported online using our website: **www.lewes-eastbourne.gov.uk**

Simply type in 'report a problem' in the enter search text field and press return to see a range of options. Another way is to type in a key word to find out more.

For example, if the grass verges need cutting, type in the word 'overgrown' or 'grass' and press return.

Some of the online reporting forms need you to register a "MyAccount" first, but you only need to do that once. The online forms are a quick and easy way to report many issues including repairs to your home and communal areas, missed bins or waste and recycling issues, dog issues, litter and fly tipping, graffiti, and vandalism, and even noise nuisance and anti-social behaviour.



The Lewes Library of Things

The Lewes Library of Things (LLOT) is a project, run by Go Local, a not-for-profit community interest company, organised by Tony Rowell, that seeks to address inequality and reduce consumption and waste by giving local people the opportunity to borrow the items they need for short term or one-off use at a reasonable cost.

From tools for DIY to a gazebo for a family celebration, there's no longer a need to spend money on buying an item that will only be used for a few hours, or that you don't have room to store in your home.

In the future we want to provide a mobile service to reduce journeys and ensure that those who don't have a car can still get heavy or unwieldy items, and to do this we aim to buy an electric cargo bike.

We'd be interested to hear from residents to see if they'd use such a service, so please let us know your thoughts by emailing **leweslot@gmail.com** or by visiting **www.leweslibraryofthings.org.uk** and using the contact form.

The Lewes Library of Things has been operating for three mornings a week from the Community Room, 2a Horsfield Road, BN7 2TA on the Landport Estate since July 2021 and has been a great success!



Community Hub

The Community Hub has become increasing popular for groups, children's parties, and weddings. If you're interested in hiring the space, there are competitive and affordable rates on offer to encourage new and upcoming groups. The main hall is 19m x 10m, the dance studio 10m x 3m, and there's also a youth club area available to rent. Work is also due to begin on two new spaces for activities in the building when resources allow.

If anyone wants to hire one or more of the spaces, please call or message **Wendy Baker** on **07852 390748** so that she can check availability and arrange a viewing.



Energy bills are rising and we want to help you:

- take control of energy usage
- has your energy company gone bust?
- are you eligible for any discounts?

Lewes Climate Hub has teamed up with OVESCO and their Big Energy Saving Network champions to offer free, impartial advice.

Free drop-in sessions

Tenants Resource Centre, 2a Horsfield Road, Landport, BN7 2TA
Friday 4th & Friday 18th February 2022
Between 10am-1pm

Come along and speak to an energy champion to see if they can help you with your energy usage. It can be helpful to bring along your latest fuel bill. Free Teas & Coffee provided!
Call or text 07909 816664 Freephone 0800 4589045 Email energyadvice@ovesco.co.uk



a joint initiative by:

Lewes Climate Hub

supported by:



Lewes District Council



LEWES TOWN COUNCIL



OVESCO
DOLE VALLEY ENERGY SERVICES COMPANY



BIG ENERGY SAVING NETWORK



COMMUNITY FUND

Ouse Valley CARES
Climate Action
Resilient Ecosystems
Sustainability

Dates for your diary

Community Café

11 February between 6.30pm and 8pm at the Community Hub.

Book Club

16 February from 7pm at the Tenant Resource Centre.

The Repair Café

19 February between 2pm and 5pm at the Community Hub.

Councillor Drop-In

15 March - Between 4pm and 7pm at the Tenant Resource Centre.

Landport Residents Association meeting

7 April from 6.30pm - 8pm at the Tenant Resource Centre (2a Horsfield Road). If you'd like more information about the meetings, please contact: debbietwitchen@gmail.com



Councillor Drop-ins

Your local County, District and Town councillors are hosting informal drop-ins on Tuesdays every other month at the Tenant Resource Centre. The first of these this year took place on the 18 January and was well received. The next drop-in will take place between 4pm and 7pm on the 15 March, so why not pop in to say hello, have a cuppa, or discuss local issues.

Easter Egg hunt and crafting event – Good Friday 17 April. Details to follow in the next newsletter.

Regular events

- **Library of Things** – 10.30-12.30pm every Tuesday, Thursday & Saturday at the TRC – 2A Horsfield Road.
- **Move it Exercise Class** – 11am every Wednesday at the Community Hub sponsored by the LRA. £2 suggested donation.
- **Litter Pick** – last Sunday of every month.
- **Book Club** – 3rd Wednesday of every month.