

Landport Residents' Association

Spring 2023 Newsletter



The Community Garden



The community garden (behind the blue door next to the Landport farmhouse flats on Hayward Road) continues to run drop-in sessions hosted by volunteers on the 1st Saturday and 3rd Thursday of the month from 10-1. Feel free to drop in for half an hour or stay the whole session. Drinks and snacks are available.

Despite the very cold weather recently, several hardy residents have made it down and we've continued to clear the poly tunnel beds, weed, and cut back, do some fruit tree and bush pruning, generally potter and enjoy a cuppa. There's been some chard and spinach and winter salad to take home too, and the winter hardy peas have surfaced, and the broad beans have survived the snow.

On Saturday 7 January we held a wassail in the afternoon. Wassail means 'be in good health' in

Anglo Saxon, and in our version of this old tradition, we thanked our fruit trees for their abundant 2022 harvest, soaked our toast in the wassail (mulled cider drink) and tied it to the fruit trees to attract the robins, guardians of the trees. We also clanged pots and pans to dispel the evil spirits in the hope of a great harvest to come, and of course feasted with food, drink and marshmallows toasted over the fire!



If you would like to give us a hand, get in touch on Facebook - Landport Community Garden Lewes - or email debbietwitchen@gmail.com All are welcome to help out on the 1st Saturday and 3rd Thursday of the month from 10-1pm.

Thanks to Nick KB for the photos!



Scam Alert...

We have been made aware of companies contacting tenants offering no-win, no-fee disrepair compensation claims. They may contact you asking for information or pictures of your home. Please never share this information with unknown or untrusted organisations.

If in doubt, please contact us at: homesfirstrepairofficer@lewes-eastbourne.gov.uk
Homes First tenants can report repairs needed directly on the website: www.lewes-eastbourne.gov.uk
Use the search words 'report a repair' in the keyword box.





Keeping the Estate Tidy

Keeping our streets clean costs **£1 billion per year** and around 2 million pieces of chewing gum, food wrappers, cans and cigarette butts are thrown onto the streets every year. A discarded cigarette can take 12 years to degrade and leaks poisons like cadmium, lead and arsenic into soil and waterways. Everyone on the estate has a right to live in a clean, litter free environment, and everyone has a part to play in reducing the amount of litter on our streets.

What you can do:

- Always use designated bins for cigarette butts and chewing gum.
- Don't throw litter out of your car window, put rubbish in a carrier bag and put it in the bin when you get home.
- If you can't find a bin for litter when you are out, put the rubbish in your pocket or handbag until you find one or until you get home.
- Reuse plastic bags you already have at home or buy a bag for life when you go shopping.
- Help out by joining the Landport litter pick on the last Sunday of every month from 11am. It's family friendly and everyone is welcome!



Cleaning up after your dog

All dog owners know they're supposed to clean up their dog's mess when out walking or when the dog goes into a communal garden. Sadly, a few dog owners avoid cleaning up after their dogs or only pick up the poop if someone is watching! Standing in dog poop is messy, unpleasant, and potentially unhealthy. The Environment Agency classes dog poop as an environmental pollutant, which means that the risks posed by it go beyond the simple inconvenience and dangers of people coming into contact with it.

It's good manners to clean up after your dog, and you have a legal obligation to do this too. It's UK law that all dog owners must pick up after their dogs when in a public place and failing to do so can result in prosecution. The fines for not picking up dog mess can be high too, with a £100 fine which can rise to £1,000 and a trip to Magistrate's Court if the fine is not paid within one week.

Please don't park on the pavements!

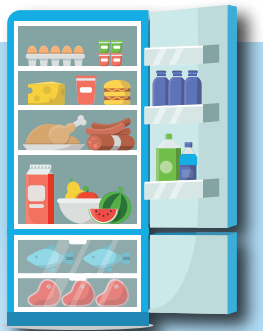
There have been several reported incidents of cars parked on pavements blocking the bus getting around the estate, and sometimes bus drivers and passengers have been abused by car drivers asked to move vehicles. **This is unacceptable**, and the bus company has said some drivers no longer want to serve the estate.

Pavement parking also makes it difficult for pedestrians to get past, particularly if they have young children or have disabilities.



It can also block emergency vehicles, so **please be considerate** as many people rely on the bus service.

The Community Fridge and Freezer



A Community Fridge is a space where everyone can share surplus food, including donations from local businesses, producers, and households. The fridge is for the community, and run by the community with local volunteers opening, closing, and cleaning the fridge.

Everyone who needs food or has a surplus can pop by and use the fridge, as long as simple rules on hygiene and labelling are followed. The fridge and freezer are open every day from 8am to 8pm and located next to the Landport Community Hub on Landport Road.

WARM SPACES



Warm spaces are safe, warm, non-judgemental spaces where local people can:

- Sit and be warm
- Study or work on their laptops (with access to Wi-fi)
- Have a hot drink
- Be with company
- Access advice or information / signposting to advice on debt, bills, benefits, and sometimes food.

There's a list of warm spaces and opening times on the website:

www.lewes-eastbourne.gov.uk

Use the search words 'warm spaces directory' in the keyword box

The Landport foodbank

At the time of the writing, there are 80 households using the foodbank. This is a shocking 223 people comprising 111 adults and 112 children. Many are working people, which is worrying trend, but thanks to dedicated volunteers, we have been able to rise to the challenge. You can help the foodbank and your community by donating fresh food or other supplies at 2a Horsfield Road on Mondays between 10am and 1pm. The foodbank is also happy to accept financial donations, as well as adults clothing, bedding, pots and pans etc. – basically anything that's still in good condition to pass on.

If you need more information, please email: debbietwitchen@gmail.com



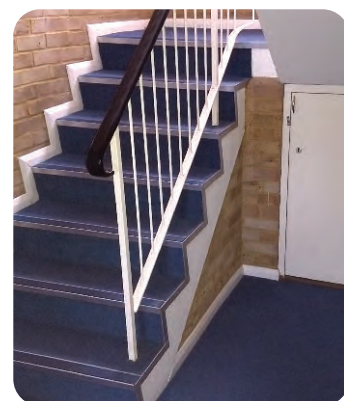
Why is it important to keep communal areas in blocks of flats clear?

If you need to leave the building via the stairs in an emergency, then it is really important that you and your family can leave safely and easily. Young children and the elderly in particular need safe space to pass on stairs and in corridors.

Leaving items like bikes, scooters, rubbish, and clutter in the communal areas can:

- Get in the way of emergency escape routes
- Block fire doors
- Create slipping or tripping hazards
- Pose a climbing danger for children

The Council has a responsibility to meet fire and safety requirements and they will do what we can to prevent hazards. This is why there is a zero-tolerance approach to items left in communal areas, which means the Council will remove and throw away any items they find in these spaces without notice.



Bike sheds consultation

Some residents on Blois Road have reported they have nowhere to store bikes in their homes, so we would like to hear your views on whether communal bike shelters, like the one pictured below, could be a solution. If you'd like to share your views, please email Lisa Thomas-Pam (Senior Caseworker – Housing) c/o: tenant.involvement@lewes-eastbourne.gov.uk



using the heading 'Blois Road bike shed consultation'.

Congratulations to Debbie Twitchen on her MBE award in the New Year's Honours



Debbie Twitchen has been Chair of the Landport Residents Association for 7 years. She also finds time to Chair the Tenants of Lewes District committee, has managed the Landport

Foodbank since 2012, and is also Chair of the Landport Community Hub and Pippa's Group, a charity which supports local children and families.

Debbie said: "I firmly believe this award is for everyone who works in any voluntary capacity across the Lewes district, and I'm truly grateful that the work of voluntary and community groups and organisations in the district has been recognised. Their work is needed now more than ever, and I thank each and every person who offers-up their time in support of others."

An MBE is a Member of the Order of the British Empire and is awarded for an outstanding achievement or service to the community which has had a long-term, significant impact.

Your Housing Officer

The Senior Caseworker (Housing) for the Landport Estate is **Lisa Thomas-Pam**. Lisa works full time, and her role is to help with any tenancy related issues which might arise. You can email her at: lisa.thomas-pam@lewes-eastbourne.gov.uk

Dates for your diary

Easter Egg Hunt on Good Friday 7 April



Meet at the Landport Recreational Ground for a 2pm prompt start, followed straight afterwards by Easter crafts and fun at Landport Community Hub until 4pm.

Refreshments and snacks available! **This is a free event** sponsored by Landport Residents' Association and Landport Community Hub.

Regular events

- **Wave Community Bank** – every Wednesday between 10am and 12pm at the Tenant Resource Centre (2a Horsfield Road)

- **Library of Things** – 10.30am to 12.30pm every Tuesday, Thursday and Saturday at the Tenant Resource Centre (2a Horsfield Road)
- **Litter Pick** – last Sunday of every month
- **Book Club** – 3rd Wednesday of every month at 2a Horsfield Road
- **Move It Wednesday exercise class** from 11am – 12 noon at the Landport Community Hub
- **The Repair Café** - the first Saturday of every month from 2-5pm at the Landport Community Hub (last repairs are booked in at 4.30 pm)
- **Working community garden group** – meets on the first Saturday and third Thursday of every month between 10 and 1pm at the garden (Hayward Road to the right of the Landport Farmhouse)