



TENANTS' VOICE

Newsletter of the Tenants Organisation of Lewes District (TOLD)

www.told.org.uk told@hotmail.co.uk

ANNUAL GENERAL MEETING



...Have your say...

We are holding our Annual General Meeting on

26 September from 7:00 pm.

Venue: Tenant Resource Centre, 2a Horsfield Road, Lewes, BN7 2TA.

Find out what we have been doing to represent you and elect the committee to work for you in the future.

At each meeting we have guest speakers, in June Sarah Gorton spoke to us about good neighbour schemes, details of which can be found on the East Sussex Community Information Service, (see page 8). We also invited tenants to bring us their memorabilia of council homes, as we are celebrate 100 years since the introduction of large scale council homes building, which came about because of the Addison Act (pg7). At open meetings TOLD decides on bids made to the environmental budget (pg 3). Transport and carer's allowance can be provided to enable you to attend. If you would like to come along please contact the TP team on 01273 487249, or email tenant.participation@lewes-eastbourne.gov.uk. **ALL WELCOME**

Neighbourhood Housing - Tenancy Services

LDC's Neighbourhood Housing Team have been reorganised. Please see your new Senior Caseworker (Housing officer) for your area below, to contact a team member please call 01273 471600

Villages North, South & East of Lewes, Peacehaven



Yvonne D'Arby
(Mon– Fri)

All of Lewes Town (Except Landport)



Rachel Dungay
(Wed, Thurs, Fri)

Seaford



Louisa Tucker
(Wed am, Thurs, Fri)

Lewes – Landport



Lisa Gallington
(Mon am, Tues, Wed)

Newhaven



Sarah Inglis
(Mon pm, Tues, Wed)



Problems with Universal Credit? —Help is at hand

Brighton Housing Trust can help tenants who have ANY questions about universal credit.

You can contact them on 01273 085458 or email ucas@bht.org.uk for free, confidential and impartial advice

Sustainable Modular Homes of the Future

TOLD are pleased to announce that the 6 newly built bungalows in Peacehaven have been let to tenants. These were constructed quickly on site, as the walls/roofs etc were pre-built at the factory of Boutique Modern, a specialist manufacturer of modular homes in Newhaven. The bungalows were designed for the over 50 age group, with level access showers, efficient electric heating, solar panels, and gardens to encourage existing tenants to downsize. This could free up those much needed family properties.



One happy new resident said, "My new *bungalow is really lovely – I have never felt so at home. The rooms are all a good size – I particularly like the large kitchen which allows me to move around easily, and has room for table and chairs. The patio doors to the garden are also great, the garden itself is easy to maintain with paving and raised bed. I feel like opening it as a show home!!*"

TOLD will continue to press for more council homes. The Council say they will be working again with Boutique Modern on an innovative scheme in Fort Road, (where the old Council offices used to be). There will be 13 new homes - six two bedroom and seven one-bedroom apartments all will benefit from a range of sustainability features.



Bulky waste

Lewes DC have a chargeable service operating on Thursdays (South of the District) and Fridays (North of the district) to enable you to dispose of large household items. Certain items cannot be collected – see www.lewes-eastbourne.gov.uk for further details. To arrange a pick up please phone 01273 471600.

Charges are as follows	
1 to 5 items	£55
6 to 10 items	£85
1 fridge	£40
1 freezer	£40
1 combined fridge/freezer unit	£40

TOLD will continue to work with LDC to try to reduce the charges which we recognise for many tenants are too costly, and to ensure that items aren't dumped around our homes.

You can also use [Freecycle](#) and [Freegle](#) where you can find someone who wants to reuse or recycle your old items for free. East Sussex County Council has an extensive list of local furniture collection and recycling schemes,. You can take bulky waste yourself to a local household waste recycling site. Or you can arrange a private contractor, but please ensure that they are registered by checking environment.data.gov.uk/public-register/view/index .



Environmental projects agreed by TOLD during 2018-2019 and how to apply for a project this year.

During 2018-2019 TOLD approved 26 projects to improve communal gardens and communal housing land, owned by LDC, for our tenants throughout the district. Here are just a few examples:

Seaford: vouchers were given for flowers, garden furniture, compost and garden tools at a number of our retirement schemes. There was also a new potting shed and rockery area at Churchill House and Summer House at Coldstream house

Newick, a new trestle table was provided for the Chatter-box Social Club and there have been vouchers for plants, soil etc to improve a number of communal gardens in the district.



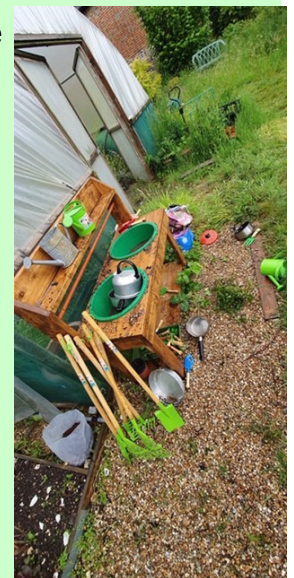
Rockery Area, Churchill House



Lewes: In Landport there is now a defibrillator for the Landport Community at 2a Horsfield Road and the community garden has benefitted from new children's gardening equipment to enable them to get involved in some muddy play.

How to apply this year:

The type of project that you can apply for has been extended to include the provision of equipment to support tenant-led community projects such as litter picking tools or games equipment. As in previous years you can also apply for funding to benefit your communal garden, or improve housing land near where you live. The following are some examples of the sort of projects that can be funded: fixed benches and/or tables, portable garden furniture, folding chairs, communal sheds or summer houses, new wildflower areas, and hanging baskets.



Project approval In order for a project to be approved the request must be agreed by the majority of tenants using the area and be of benefit to tenants, we are keen to get more bids from rural areas and from tenants living in general needs housing. For more details and to apply online via the LDC website <https://www.lewes-eastbourne.gov.uk/housing/get-involved/get-involved-in-your-neighbourhood-in-lewes/environmental-improvements-application-form> or call on 01273 487249 and ask for a form. Applications are considered at our TOLD Open meetings. All projects approved should be completed by the end of April 2020.

Lewes District Council are recruiting additional members to their Tenant Involvement & Empowerment (TIE) Panel

The TIE panel will represent tenants across LDC & Eastbourne helping:

- To improve and monitor services across Homes First
- Oversee and advise on the work of our tenant scrutiny team
- Ensure tenants are involved in key decisions, by overseeing our new tenant involvement strategy, the development of housing policies, and the

If you have :

- an interest in Council housing
- experience of working in partnership with groups (this does not need to be in a workplace environment)
- the ability to work as part of a team
- basic computer literacy



Then this could be for you. We offer relevant training to help you take part and the opportunity to make a difference. For those of you

To apply, please email us at tenant.involvement@lewes-eastbourne.gov.uk or call us on 01273 487249 by 26 August. Please give us a brief overview of why you would like to join the panel. Informal interviews will be from 15 September

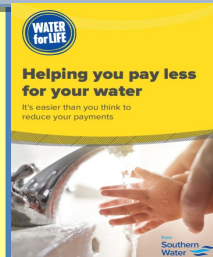


LDC now have a group of trained tenant 'scrutineers'- thank you to all who have offered their time to help improve the housing services, which will benefit us all in the long run.

The team have been training over the last few months, with an external trainer, and are due to commence their first review later this summer. The TIE panel have chosen Communal Repairs for the first scrutiny review. This topic was selected based on your feedback from the STAR survey, which is the tenant satisfaction survey sent to a selection of tenants every quarter. We will be looking for your views on this subject- if you would like to talk to the team about your experiences with communal repairs please email toldsec@gmail.com or contact 01273 487249.

Helping you pay your water bills

If your household income is less than £16,015 excl income from DLA or PIP, or someone in the house receives pension credit, means tested benefits or if you owe money to Southern Water you might be able to get help with your water bill. Contact Southern Water on 0800 027 0363 go to southernwater.co.uk/payless



Sussex Police Information

'We are stepping up patrols in the Lewes District due to ongoing issues across the area.



We want to be a presence to help make the community feel safe. If you see us driving or walking around give us a wave!

Sussex Police want to tackle Anti Social Behaviour coming from groups of youths, if you encounter this on a Friday or Saturday evening you should call our Operation Blitz phone number [07989188960](tel:07989188960) and we will do our best to attend quick as we can.



Greenhavens Network are an umbrella group supporting over 90 green space community groups, professionals and

residents working together in the area from Telscombe to Seaford to make a difference to your green spaces.

On their website, <https://greenhavens.network>, or call Karen Rigby-Faux on 01273- 487249. You can find out more about gardens conservation, education, health and well being, and how you can get involved in your green spaces.

They are currently working on two big projects; one to create wildflower corridors across the Greenhavens and the other is promoting and supporting physical activities in green spaces.

Lewes District Councils Tenant Incentive Scheme

This scheme offers LDC tenants living in properties that are too big for their needs the chance to move to a smaller home. You can receive a sum of money to downsize—see opposite. In addition the council may pay up to £500 removal costs.

For more information and to register please contact your Senior Caseworker on 01273 471600. TOLD

supports this scheme and hope that tenants will consider the option in order to free up under occupied homes for family use.

Current Property	New Property Size	Maximum incentive
4 bedrooms	Sheltered studio	£4,000
4 bedrooms	1 bedroom	£3,000
3 bedrooms	2 bedrooms	£1,000
3 bedrooms	1 bedroom	£2,000
2 bedrooms	1 bedroom	£1,000

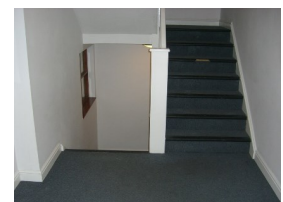
Working together to keep you safe

A reminder for all residents of blocks of flats.



No Smoking

Please do not store/ keep items in the communal corridors. This is a fire hazard and stops people exiting the block safely. Items can also restrict the access of the emergency services. Smoking in communal corridors is not allowed and against the law. There are regular inspections of blocks of flats. Items found in communal areas can be removed without prior notice and those responsible may be charged by LDC for removal



Neighbourhood First in the Lewes District.

LDC's Neighbourhood First team are up and running, providing a local link in the community with the council. Neighbourhood First Advisors will be taking care of things like fly-tipping, littering and graffiti and will be working in partnership with the County Council and the local Police. Advisors will also be getting involved in community events and will have a link into the various tenant involvement groups in the district. You can contact the team by calling 01273 471600, or go to www.lewes-eastbourne.gov.uk/report-a-problem/ or download the Report It app from your app store .

REPORT IT

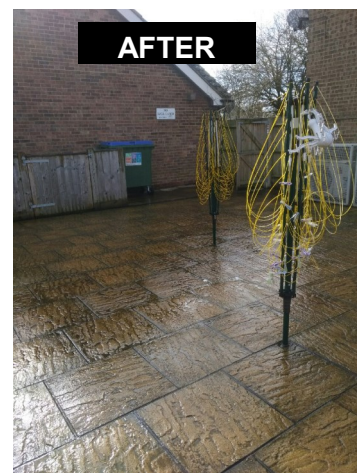


BEFORE

A good clean up at Littlemead-Cooksbridge

Neighbourhood First, the Waste Team, Burleys (Garden Maintenance) and the Homes First team joined forces to arrange a community 'clean up' at Little Mead, Cooksbridge, following concerns from local residents.

Craig Richards from the Neighbourhood First team reports that 'all the communal hallways were completely cleared, communal drying areas strimmed, swept and cleared, road gulleys outside swept and cleared (where possible), adjacent parking area swept and cleared, the area litter picked, and Burleys cut back undergrowth to the garden area and cleared brambles. Thank you to all those that helped on the day. If you would like to see something similar happen in your area, get in touch, our details are above, or you can speak to the Senior Caseworker (Housing Officer) for your area".



AFTER

HOMES FIRST Help with maintaining internal decoration of your home.

To qualify for help to re-decorate your home you **must**:

- be in receipt of either Disability Living Allowance (DLA) or Personal Independence Payment (PIP), or be over 65 years of age **and**
- have a rent account of no more than £250.00 rent owing to the Council **and** be up to date with any agreement to repay arrears

In addition to the above, to qualify for the redecoration of a room to be done by an LDC contractor:

- You must not have family or people permanently living with you, who are under 65 years and able to carry out decorating. If people living with you are unable to help we will need proof they claim DLA or PIP
- The room must be in need of redecoration (as determined by the council) or a period of at least four years has passed since the room was decorated.

If you do not qualify for a room to be redecorated by an LDC contractor, you may still be able to apply for paint

- One room can be applied for annually
- The supply of paint will not be given for the same room within a four year period

Spotlight on: Landport Residents' Association

Over the Easter holidays Landport Residents' Association (LRA) was involved in three community events.

There was the Annual Easter Egg Hunt, which was a great success with over 500 eggs being placed in the park - all of which were collected in the first 20 minutes! The children were polite, well behaved, and a real credit to their parents.

The Residents Association would like to thank the Neighbourhood First team for checking the park before the event for us, much appreciated.



There was also a FREE Easter egg decoration event at the Local community room. Thanks to Pat for making the cakes and to both Pat and David for helping the children to decorate them .



At the Community Hub The LRA helped to fund a roller disco event. This was organised and run by



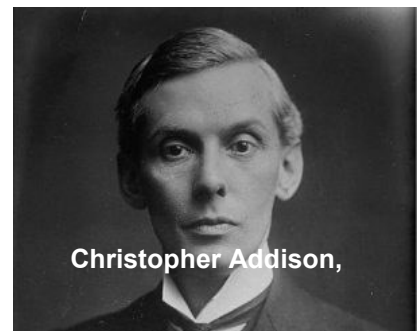
Wendy from the Dance Academy. Big thanks to her.

As well as these events, the LRA help to host a number of regular activities such as a weekly community café, games café and litter picks. Details of these can be found by going to [facebook.com/LandportRA](https://www.facebook.com/LandportRA).

Celebrating 100 years since the Addison Act, the start of Council Housing

Christopher Addison was the Minister of health responsible for the 1919 Addison Act which enabled local authorities to develop new housing for working people. It followed a speech by Prime

Minister Lloyd George as British troops returned from The Great War, calling for 'a country fit for heroes to live in'.



The aim was to produce high quality, well-proportioned housing, with gardens where possible, a very big change from working class housing at the time.

To celebrate the 100 years we'd like to know of any stories you or your relatives have about living in council housing, what it means to you, or has meant to your family. This could include any memories of new estates being built, any community celebrations (such as the Queen's Jubilee), or memories of how day to day life has changed over the years.

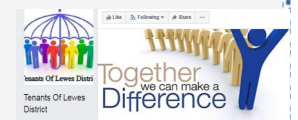
We are also looking for photos or information such as old rent books that might be lurking in attics or cupboards across the district, that can be used as part of these celebrations. We can come to you to take scans of what you have, please phone us on 01273 487249, or you can email photos and memories to tenant.involvement@lewes-eastbourne.gov.uk. In both instances we would like a few details about locations and dates.

Thank you to everyone that entered the Spring Word Search. The winner was Mrs Sexton from Seaford. Please see below for your chance to win a £10 shopping voucher. **Please make sure you include your name and address with your entry.** One lucky winner will be picked at random and the winner's details will be in the next edition of Tenants Voice. To celebrate 100 years of Council Housing all the words in this word search are associated with Council Housing.



BUNGALOW
HOMES FIRST
CENTENARY
ESTATE
COUNCIL
TRA'S
REPAIRS
CABINET
SECURITY
LANDLORD
PLAY AREAS
INVOLVEMENT
TENANCY
HOUSE
TOLD
FLAT
ADDISON
RENT

Up to date news can be found via our website - www.told.org.uk and our Facebook page - www.facebook.com/Tenants-Of-Lewes-District-



Neighbourhood First ask that residents **DO NOT** feed the gulls. They can be noisy, can create mess as well as damage to property. They can also attack people and pets.

The words may read forwards, backwards, vertically, horizontally or diagonally. Once you have found them, send your completed entry to the Editor, Tenants Voice, 2a Horsfield Road, Lewes, BN7 2TA or by email to tenant.participation@lewes-eastbourne.gov.uk by the **end of September**. **Please make sure you include your name and address with your entry**

ESCIS stands for East Sussex Community Information Service. It is a computer database of local and community information developed and managed by the Library and information Service of East Sussex County Council in association with Brighton and Hove Library Service. It is free to be listed and free to use. ESCIS holds information for around 7,000 organisations based in East Sussex and Brighton and Hove. Information can be found on, clubs and societies, environmental groups, sports clubs and facilities, places to visit, Local authorities and Political parties, etc. ESCIS can be accessed for free in every library in East Sussex and anywhere else with Internet access via <https://www.escis.org.uk/>



FREE training - Mon 9 - Fri 13 September 2019 from 10am to 3pm at Phoenix Brighton, 10 - 14 Waterloo Place, BN2 9NB, to help launch your own business in less than 1 week!. Make money from your hobby!
www.facebook.com/youcanstartupclub.