

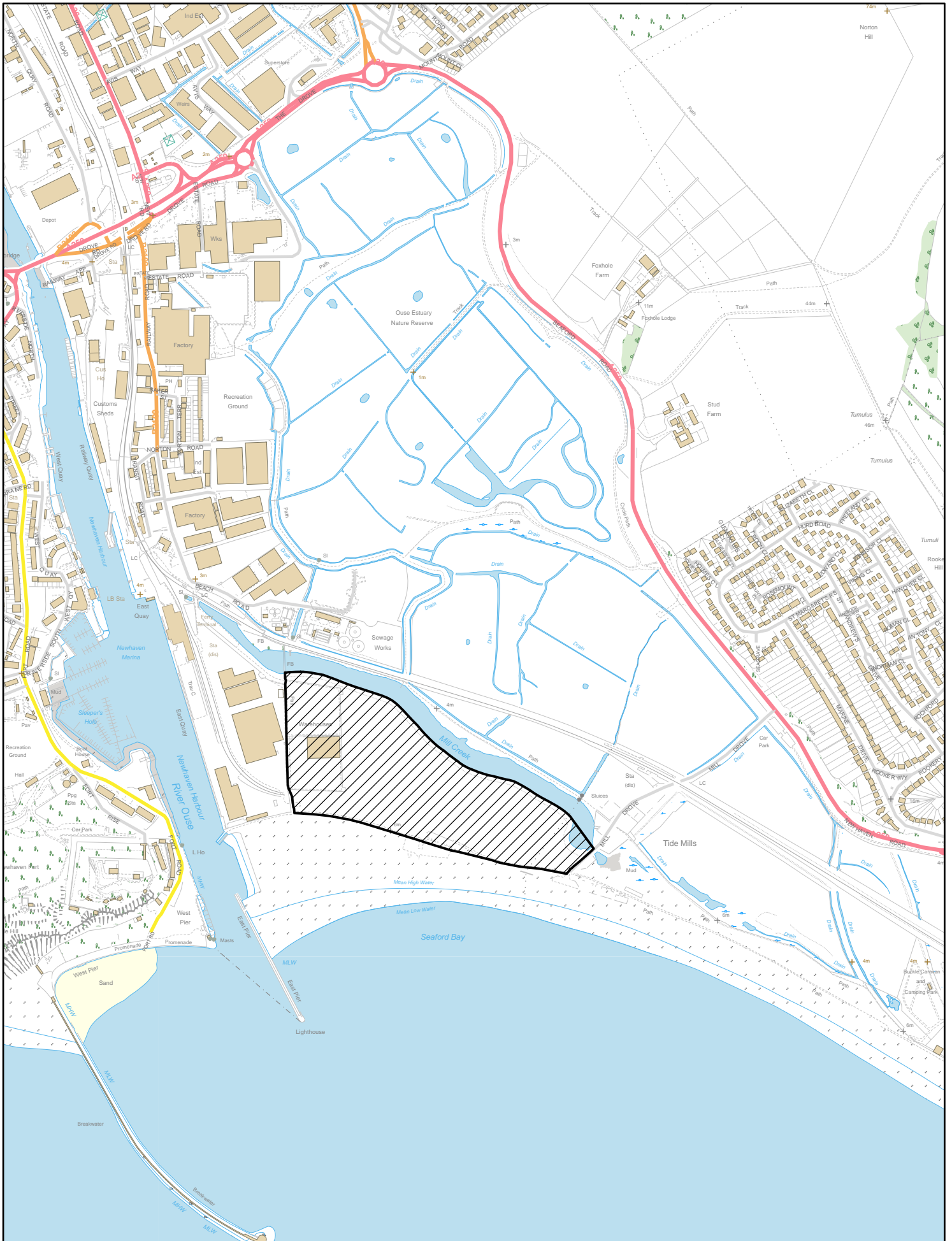
## **Newhaven (Land at Tidemills) Article 4**

Designated 1978

### **What is controlled by the Direction?**

Planning permission within this area is needed for:

- A dock, harbour or quay used for industrial purposes
- The construction of a railway
- Any development required for the purpose of shipping or in connection with the embarking, disembarking, loading, discharging or transport of passengers, livestock or goods at a dock, pier or harbour
- Any development required for the movement of traffic by canal or inland navigation
- The improvement, maintenance or repair of any inland waterway that is not a commercial waterway or a cruising waterway
- The use of any land for the spreading of dredgings



**Newhaven (Land at Tidemills) Article 4 Direction**

For reference purposes only, no further copies to be made  
(C) Licence 100019275 2019