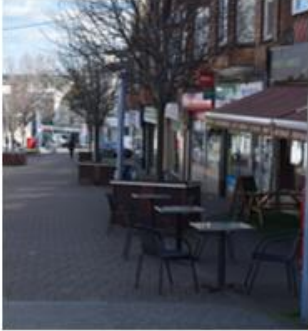


# Statement of Community Involvement - Factsheet

The Statement of Community Involvement sets out the Council's approach to involving the community and stakeholders in the production of planning policy documents and planning control decisions in the District

## Community Involvement in Plan Making



**Plan making is setting the strategy for the future of the area over a long period, typically 15-20 years, in the form of plans and policies**

What we will consult with you in the preparation of:

**Local Plans**

**Supplementary Planning Documents**

**Statement of Community Involvement**

**Community Infrastructure Levy – Charging Schedule**

**The most efficient way to stay up to date with consultations is on our database**

The Council would like to ENGAGE EVERYONE who may have a role or interest in the development of the district. In addition to local residents, this includes; businesses, community groups, landowners, developers, public sector organisations and national agencies.



### **Ways we will engage with you:**



Social Media, local media or District news to promote the consultation



Surveys and questionnaires to gather information



Engage community organisations



Through presentations, forums or public exhibitions



Make available paper copies of the documents at the libraries in the District

[www.planningpolicyconsult.lewes-eastbourne.gov.uk](http://www.planningpolicyconsult.lewes-eastbourne.gov.uk)

For more information on Plan Making in Lewes District, please visit:  
<https://www.lewes-eastbourne.gov.uk/planning-policy/>